

Standardised centrifugal electric pumps built in stainless steel AISI 304

**APPLICATIONS**

- Water supply to civil, agricultural and industrial plants
- Pressure boosting
- Fire-fighting, heating and air conditioning systems
- Pumping industrial liquids
- Irrigation
- Refrigeration towers
- Swimming pools
- Emptying
- Washing plants

**TECHNICAL DETAILS**

- Highly resistant structure

**PUMP TECHNICAL DATA**

- Maximum working pressure: 10 bar
- Temperature of the liquid:
  - 10°C ÷ +90°C
  - 10°C ÷ +110°C
  - 20°C ÷ +120°C

**MOTOR TECHNICAL DATA**

- High efficiency motors
  - IE1-2 starting
  - IE3 starting
- Self-ventilated 2 and 4 poles asynchronous motor
- Class of insulation F
- IP 55 protection degree

**MATERIALS**

- Pump casing and casing cover in:
  - AISI 304 for

32-125/160/200

40-125/160/200

50-125/160/200

65-125

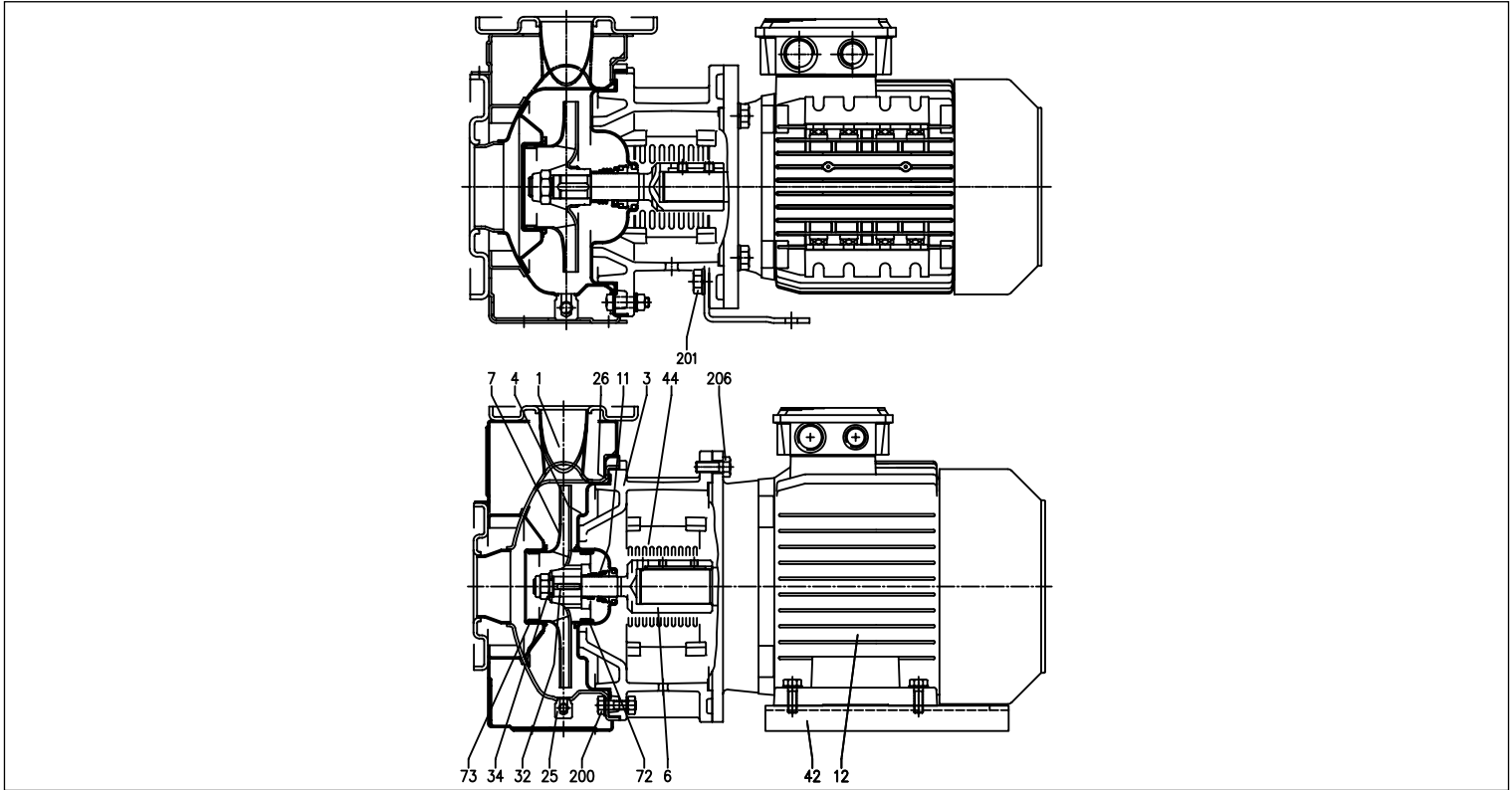
- Mechanical seal standard in:
  - Carbon/Ceramic/NBR
  - Silicon Carbide/Silicon Carbide/FKM
  - special mechanical seals available



# JH SERIES

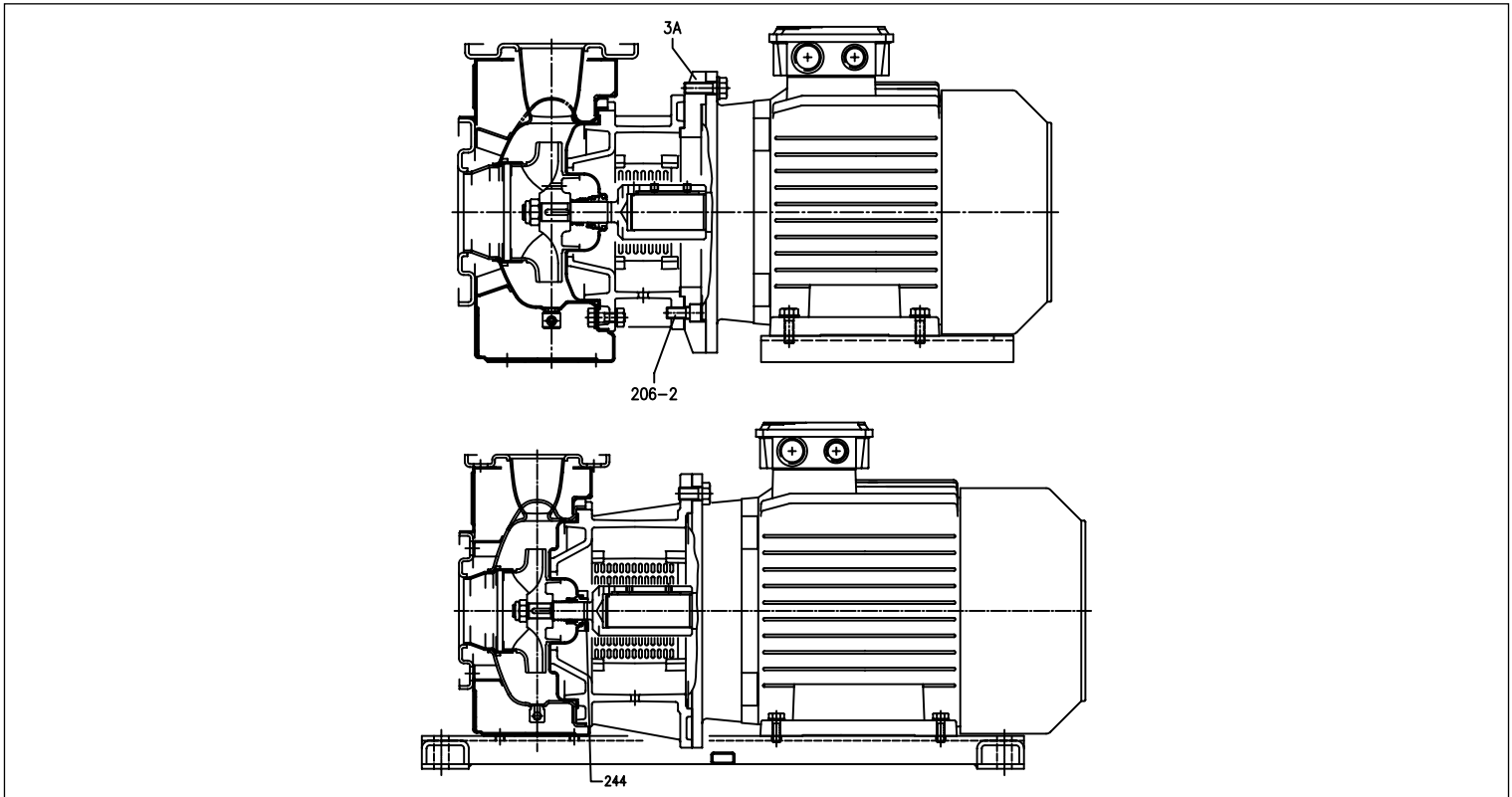
SECTIONAL VIEW 32, 40, 50 SERIES

2 Poles



SECTIONAL VIEW 65 SERIES

2 Poles

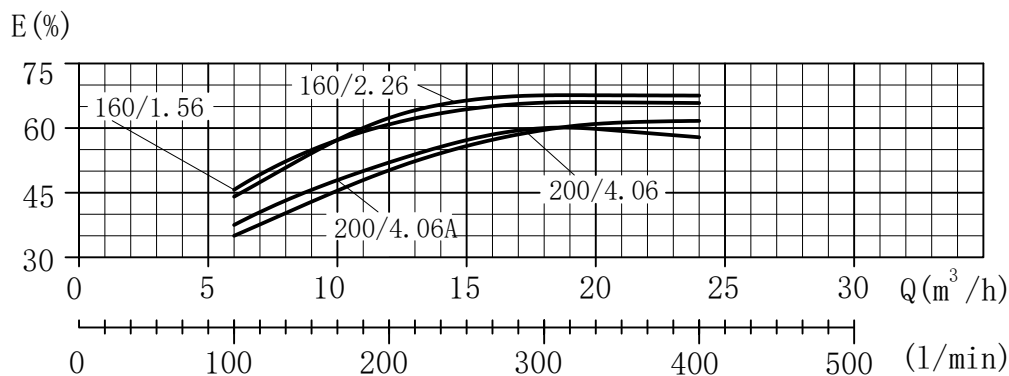
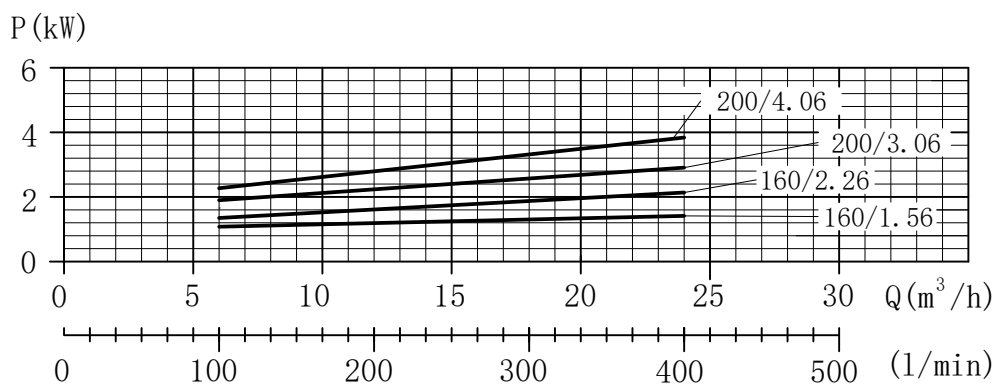
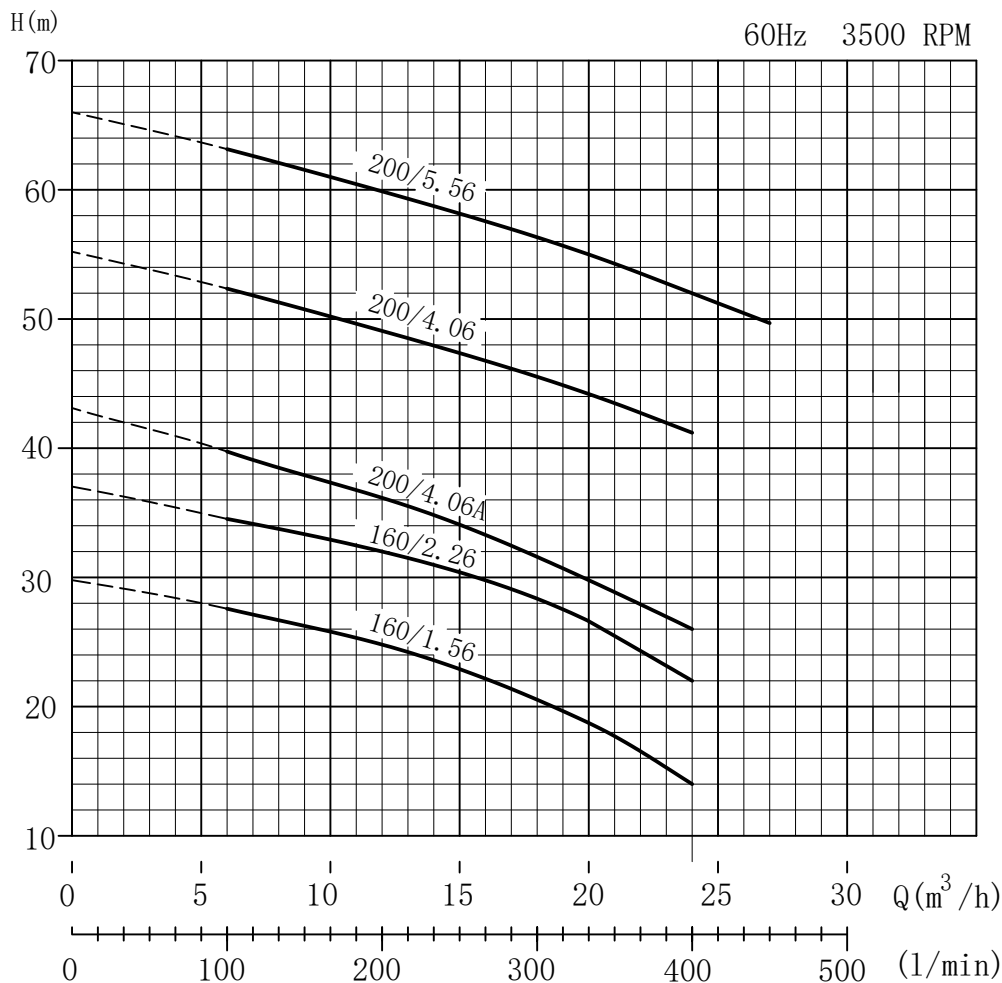


# JH SERIES

## MATERIALS TABLE

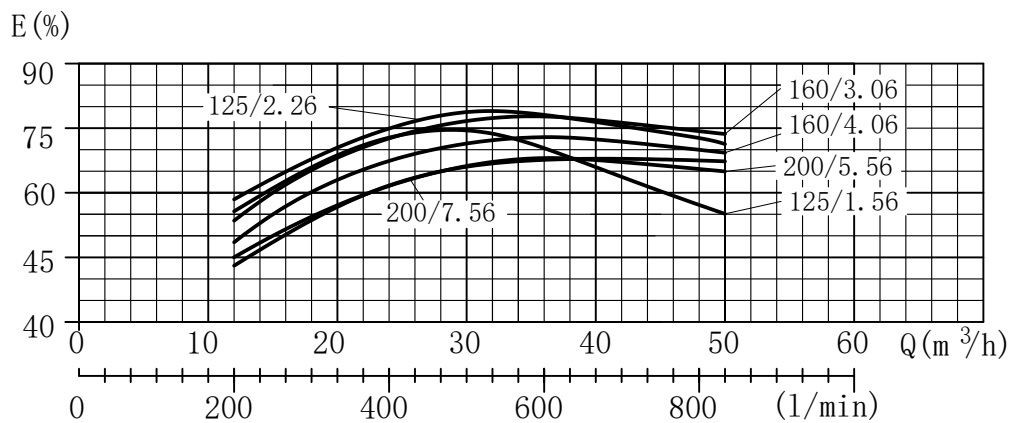
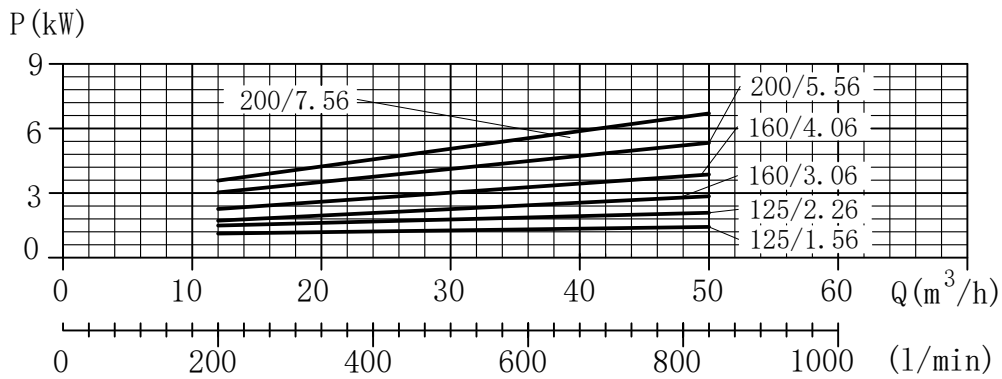
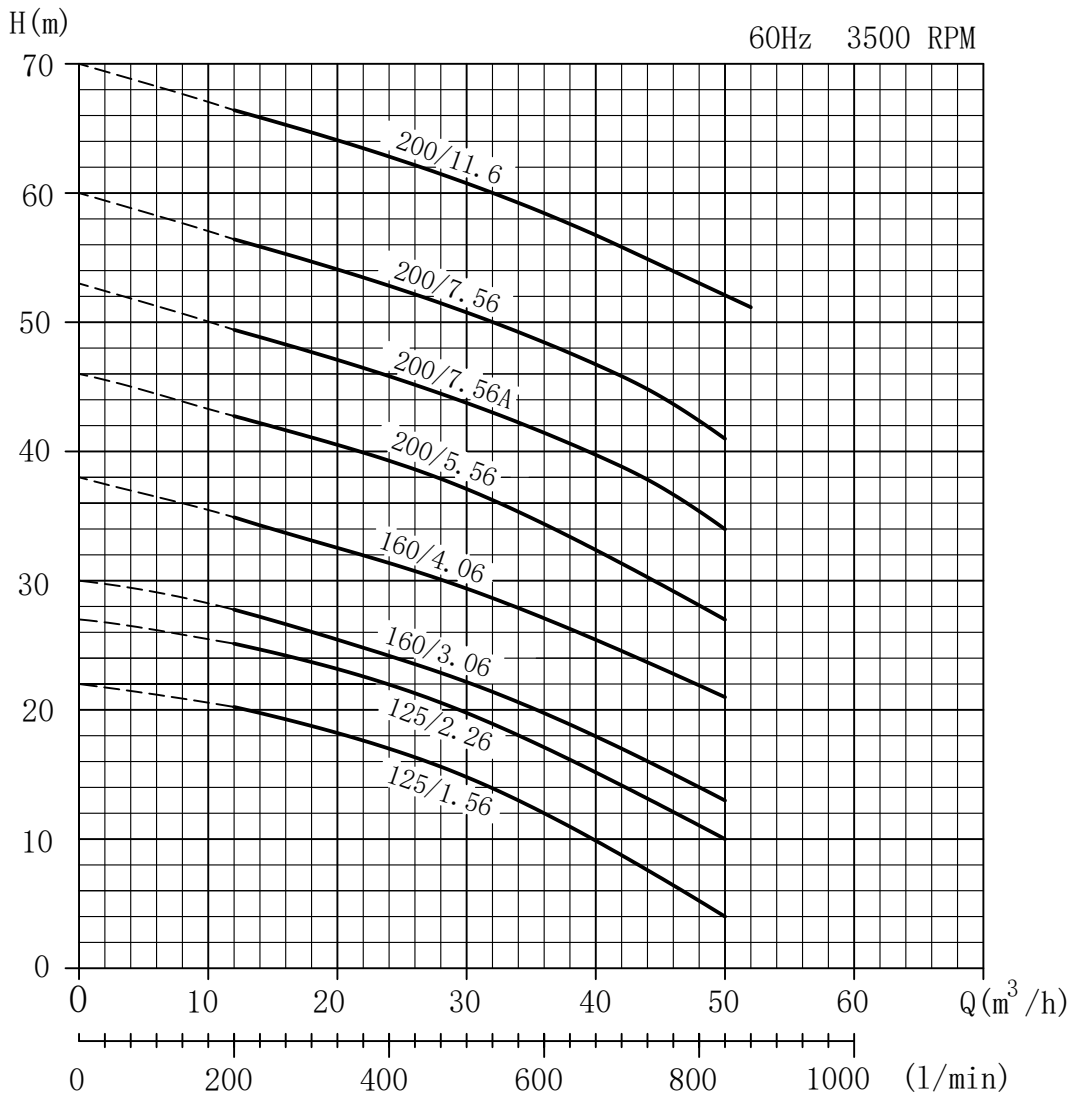
Ref.	Name	304 SS		Materials
001	Pump casing	EN 1.4301 (AISI 304)		
003	Motor bracket			Cast iron EN-GJL-200-EN 1561
003A	Adapter ring [1]			Cast iron EN-GJL-200-EN 1561
004	Casing cover	EN 1.4301 (AISI 304)		
006	Shaft- Part in contact with the liquid	EN 1.4301 (AISI 304)		
007	Impeller	EN 1.4301 (AISI 304)		
011	Mechanical seal	Carbon/Ceramic/NBR		
012	Motor			-
025	Plug			EN 1.4401 (AISI 304) / PTFE
026	O-Ring	NBR		
032	Key			EN 1.4401 (AISI 304)
034	Impeller nut	EN 1.4301 (AISI 304)		
042	Motor support			Aluminium / Galvanised steel
044	Support protection			EN 1.4301 (AISI 304)
072	Casing ring [2]	EN 1.4301 (AISI 304)		
073	Casing ring (not for 65)	EN 1.4301 (AISI 304)		
200	Screw (pump body)			Stainless steel A2 70 class ISO 3506/1
201	Screw			Galvanised steel
206	Support screw			Galvanised steel
206-2	Adapter ring screw			Galvanised steel
244	Plug [3]	-		EN 1.4301 (AISI 304)

# JH 32 SERIES



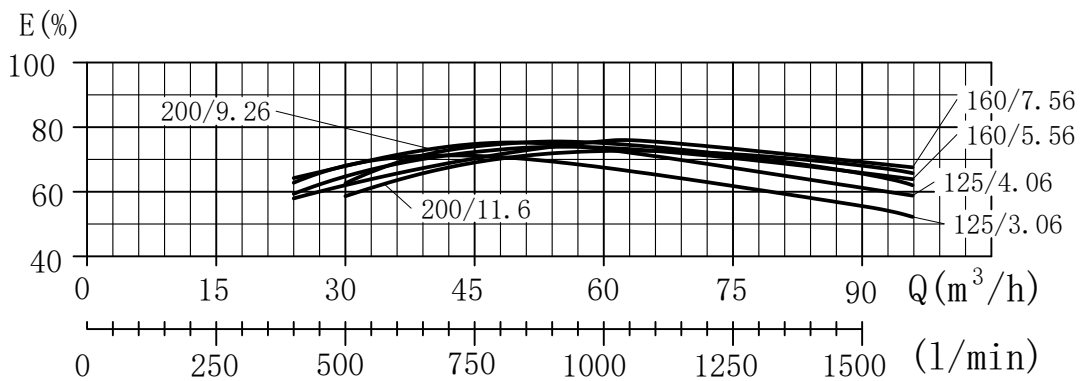
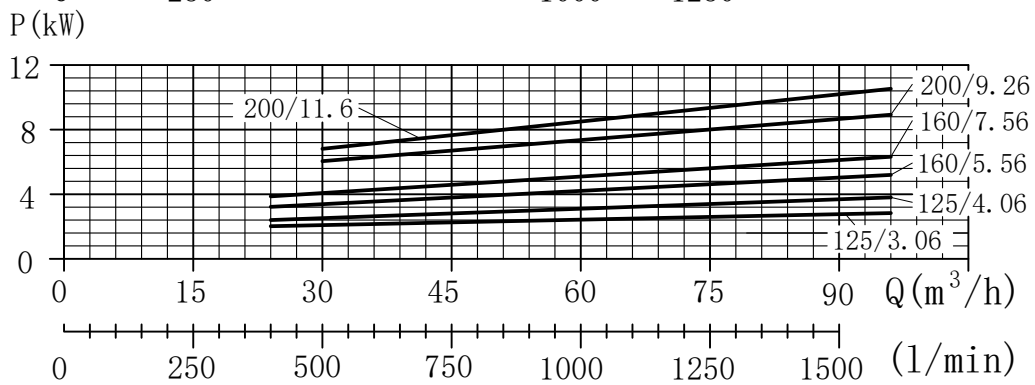
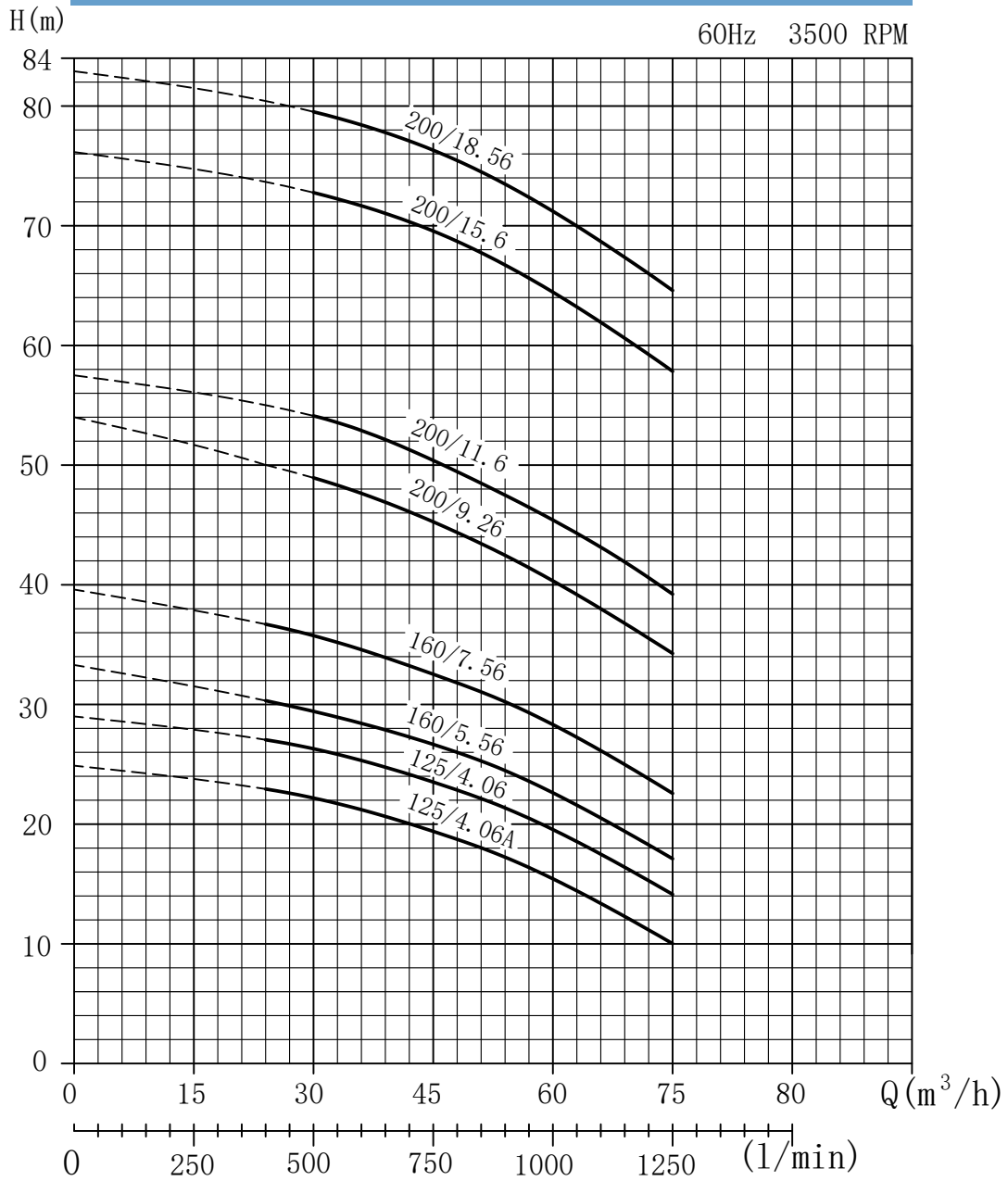
# JH 40 SERIES

60Hz 3500 RPM

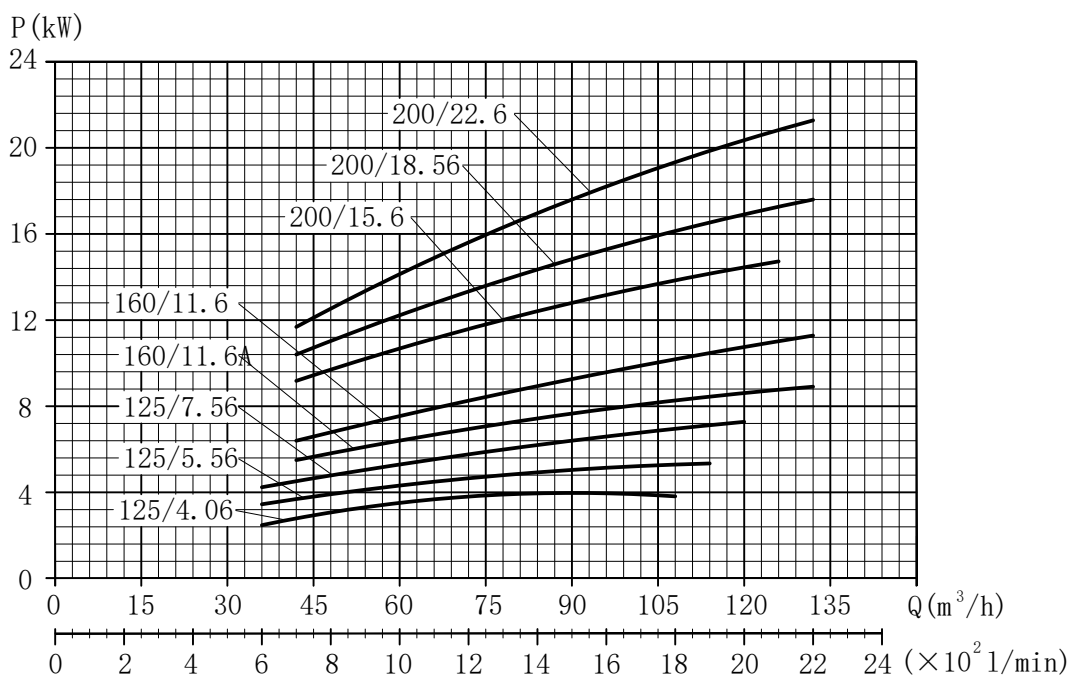
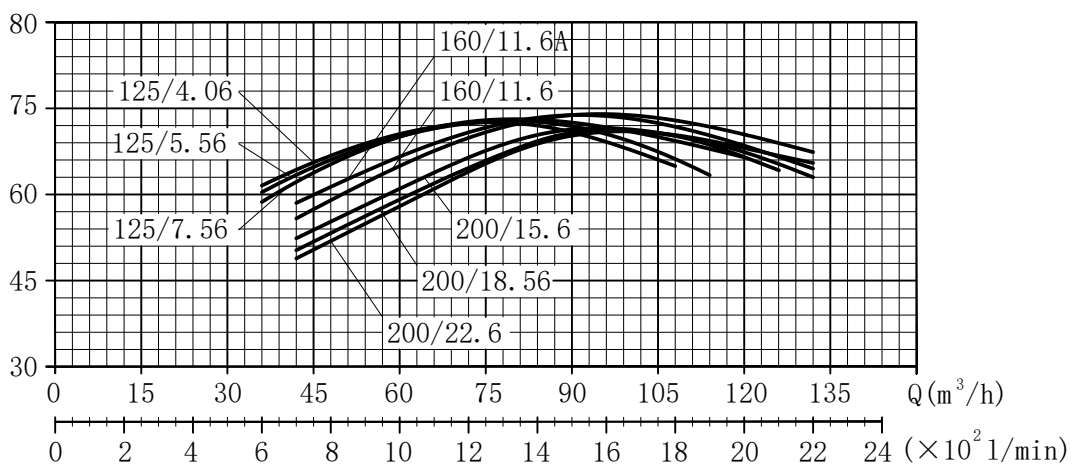
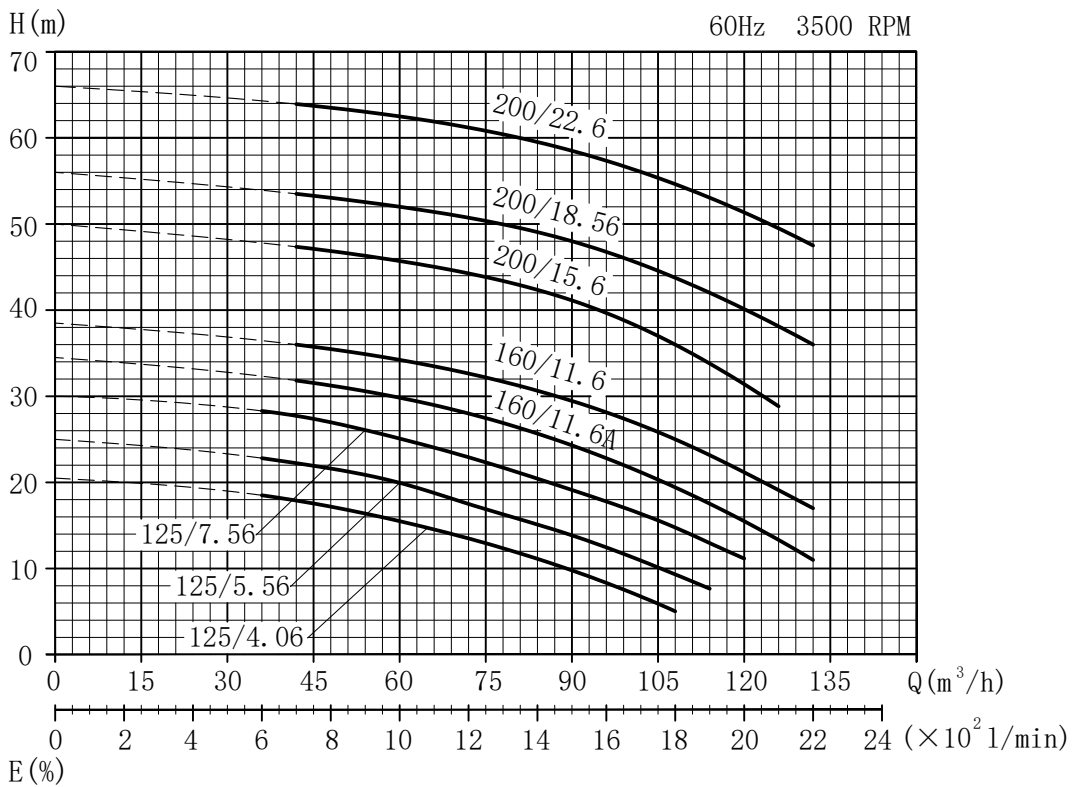


# JH 50 SERIES

60Hz 3500 RPM



# JH 65 SERIES





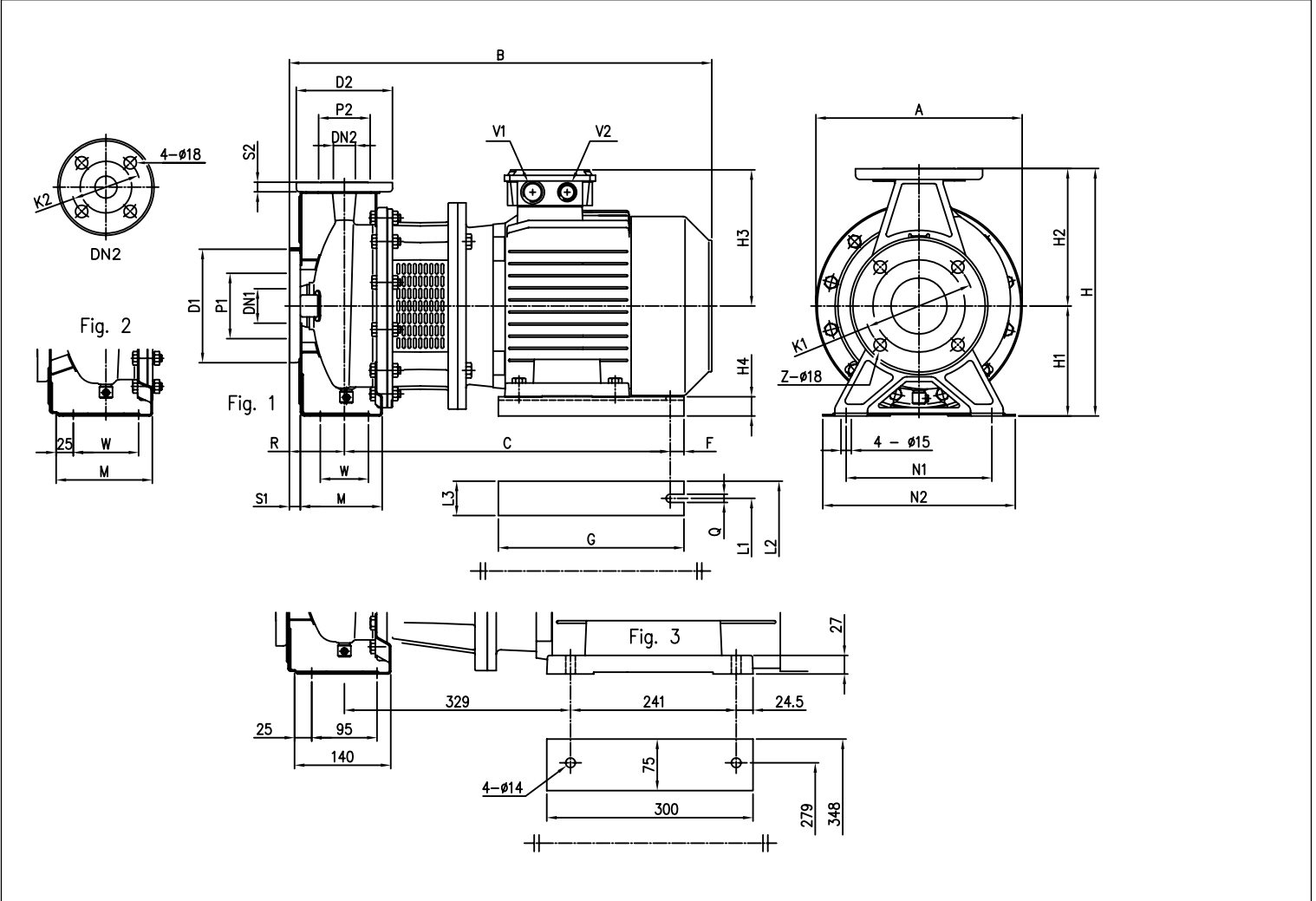
# JH SERIES

## CENTRIFUGAL ELECTRIC PUMPS STANDARDISED IN COMPLIANCE WITH EN

733

32, 40, 50, 65

2 Poles



**DIMENSIONAL TABLE**

Model	Dimensions [mm]																											Weight [kg]												
	DN1 Ø	P1 Ø	K1 Ø	D1 Ø	S1	Z	[1]	[2]	DN2 Ø	P2 Ø	K2 Ø	D2 Ø	S2	Fig.	H	H1	H2	H3	H4	R	W	M	N1	N2	A	B	C	F	G	Q	L1	L2	L3	V1	V2	Weight	*			
32-200/5.5	50	90	125	165	16	4	4	32	75	100	140	14	1	340	160	180	198	28	80	70	119	190	240	295	607	479	15	270	12	216	266	50	M32x1.5	M32x1.5	71.8	71.8				
32-200/7.5	50	90	125	165	16	4	4	32	75	100	140	14	1	340	160	180	198	28	80	70	119	190	240	295	607	479	15	270	12	216	266	50	M32x1.5	M32x1.5	-	87.0				
40-160/4.0A	65	110	145	185	16	4	4	40	80	110	150	14	1	292	132	160	155	32	80	70	118	190	240	244	528	388	15	220	12	160	200	40	M25x1.5	M20x1.5	42.5	42.5				
40-160/4.0	65	110	145	185	16	4	4	40	80	110	150	14	1	292	132	160	171	20	80	70	118	190	240	244	550	395	15	220	12	190	240	50	M25x1.5	M20x1.5	44.6	44.6				
40-200/5.5	65	110	145	185	16	4	4	40	80	110	150	14	2	340	160	180	198	28	100	70	115	212	265	300	627	479	15	270	12	216	266	50	M32x1.5	M32x1.5	72.2	72.2				
40-200/7.5	65	110	145	185	16	4	4	40	80	110	150	14	2	340	160	180	198	28	100	70	115	212	265	300	627	479	15	270	12	216	266	50	M32x1.5	M32x1.5	-	82.0				
50-125/4.0A	65	110	145	185	16	4	4	50	90	125	165	16	2	292	132	160	155	32	100	70	114	190	240	250	548	388	15	220	12	160	200	40	M25x1.5	M20x1.5	35.5	35.5				
50-125/4.0	65	110	145	185	16	4	4	50	90	125	165	16	2	292	132	160	171	20	100	70	114	190	240	250	570	395	15	220	12	190	240	50	M25x1.5	M20x1.5	45.6	45.6				
50-160/5.5	65	110	145	185	16	4	4	50	90	125	165	16	2	340	160	180	198	28	100	70	115	212	265	300	627	479	15	270	12	216	266	50	M32x1.5	M32x1.5	63.8	63.8				
50-160/7.5	65	110	145	185	16	4	4	50	90	125	165	16	2	340	160	180	198	28	100	70	115	212	265	300	627	479	15	270	12	216	266	50	M32x1.5	M32x1.5	-	91.0				
50-200/11.0	65	110	145	185	16	4	4	50	90	125	165	16	2	360	160	200	198	28	100	70	115	212	265	300	667	479	15	270	12	216	266	50	M32x1.5	M32x1.5	-	90.7				
65-125/5.5	80	125	160	200	18	4	4	65	115	145	185	16	2	340	160	180	198	28	100	95	140	212	280	245	627	479	15	270	12	216	266	50	M32x1.5	M32x1.5	60.0	60.0				
65-125/7.5	80	125	160	200	18	4	4	65	115	145	185	16	2	340	160	180	198	28	100	95	140	212	280	245	627	479	15	270	12	216	266	50	M32x1.5	M32x1.5	-	79.4				
65-160/11.0A	80	125	160	200	18	4	4	65	115	145	185	16	2	360	160	200	198	28	100	95	140	212	280	300	627	479	15	270	12	216	266	50	M32x1.5	M32x1.5	-	82.4				
65-160/11.0	80	125	160	200	18	4	4	65	115	145	185	16	2	360	160	200	198	28	100	95	140	212	280	300	667	479	15	270	12	216	266	50	M32x1.5	M32x1.5	-	88.0				
65-200/15	80	125	160	200	18	4	4	65	115	145	185	16	2	405	180	225	238	20	100	95	140	250	320	300	806	621	20	350	14	254	314	60	M40x1.5	M40x1.5	-	138.0				
65-200/18.5	80	125	160	200	18	4	4	65	115	145	185	16	2	405	180	225	238	20	100	95	140	250	320	300	850	621	20	350	14	254	314	60	M40x1.5	M40x1.5	-	137.2				
65-200/22	80	125	160	200	18	4	4	65	115	145	185	16	3	405	180	225	268	-	100	-	-	250	320	300	885	-	-	-	-	-	-	-	-	-	-	-	-	-	-	175.0

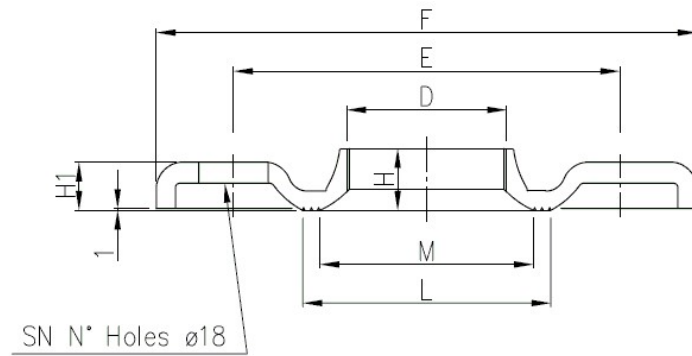
# CENTRIFUGAL PUMPS

## CONSTRUCTION

### FITTINGS DIN 2542 PN10

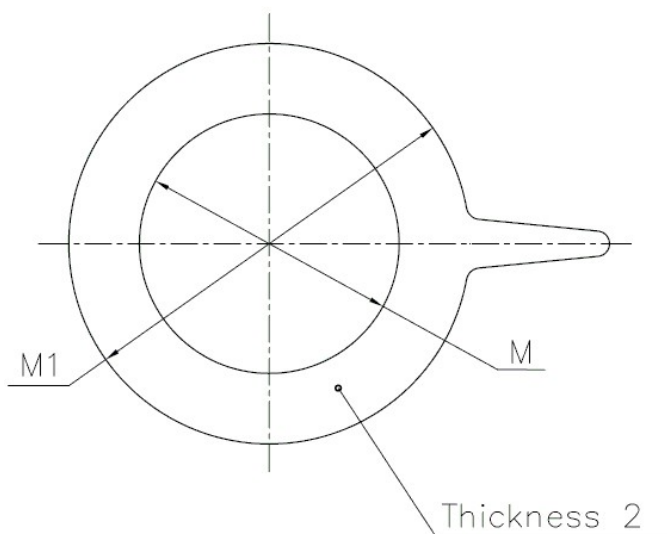
#### FLANGE

#### COUNTERFLANGE ZINCKED



DN	D	Counterflange							Screw	
		E	F	H	H1	L	M	SN	DIMENSIONS	MATERIAL
32	G 1 1/4	100	140	15	11.5	67	50	4	M16x55	Gv. Steel 8.8 streight class ISO 898-1
40	G 1 1/2	110	150	17.5	11.5	72	58	4		
50	G2	125	165	19	15	89	70	4		
65	G 2 1/2	145	185	23	14	104	88	4		
80	G3	160	200	24	16	117.5	100	4	M16x60	
100	G4	180	220			148	108	8		

#### GASKET



DN	M	M1
32	38	82
40	50	93
50	60	107
65	80	125
80	90	140
100	115	160