

STAC

SRL

VERTICAL MULTISTAGE PUMPS

EV 1 - 3 - 6 - 10 - 15 - 20 - 30 - 45 - 65 - 95

60Hz



EV Series 1 - 3 - 6 - 10 - 15 - 20 - 30 - 45 - 65 - 95

Vertical Multistage Centrifugal Pumps

APPLICATIONS

- Boiler feed
- Circulation of hot and cold water for heating, cooling and conditioning systems
- Handling of water, free of suspended solids, in the civil, industrial and agricultural sector
- Irrigation systems
- Pressure boosting and water supply systems
- Wash down unit
- Water treatment plants

FEATURES

- Full stainless steel in contact with water (inox version), compact and solid structure
- Diffuser bushing made of graphite for durability against dry running (EV 30-45-65-95)
- Easy disassembly without any special tool
- Easy installation in-line ports
- Fabricated stainless steel impeller and diffuser for corrosion resistance and superior efficiency
- New hydraulic design for the highest efficiency
- Oversize ball bearing (bearing bracket) ensures motor-bearing long life and eliminates axial and other adjustments of moving parts
- WRAS certified PPS (EV 1-3-6-10) / PTFE (EV 15-20-30-45-65-95) replacement floating neck ring for cost effective maintenance and long-lasting performance
- Removal of the mechanical seal without dismounting the pump; for models higher than 4kW no need to remove the motor
- Replaceable stainless steel wear ring in the neck of the impeller (EV 30-45-65-95)
- Shaft bearing and journal sleeve made of tungsten carbide
- Standard mechanical seal (EN 12756 ex DIN 24960) WRAS certified; balanced version for EV 30-45-65-95
- Standard IE3 motor without oversize bearing, size B14 up to 4kW / size B5 from 5.5kW and above
- Tungsten carbide intermediate bearing to control and eliminate vibration and stabilize the rotor with a large number of stages

SPECIFICATIONS

- Capacities up to 140 m³/h
- Head up to 284 m
- Direction of rotation: clockwise looking at the pump from the top down
- Discharge and Suction port: Oval, Round flanges, Victaulic and Clamp connections
- Hydraulic characteristics are guaranteed, according to ISO standard 9906:2012, grade 3B
- Liquid temperature range: from -15°C to +120°C
- Materials: suitable for handling potable water (materials approved WRAS, ACS, KTW)
- Maximum working pressure: Oval flange 16 Bar; Round Flange, Victaulic and Clamp connections 25 Bar
- Motor powers from 0,37 to 45kW

AVAILABLE ON REQUEST

- AISI 304 version for models 30-45-65-95
- Special materials for the mechanical seal, gaskets and elastomers
- Balanced mechanical seal EN 12756 for EV 1-3-6-10-15-20
- Oval counter flanges (EV 1-3-6-10-15-20)
- Round counter flanges

EV 1-3

MATERIAL IN CONTACT WITH THE LIQUID						
Pos.	PARTS DESCRIPTIONS	Type	MATERIAL			
			X version		N version	
			ASTM/AISI	DIN / EN	ASTM/AISI	DIN / EN
10.00	Pump casing	Stainless Steel	CF 8 / AISI 304	1.4308	CF 8M / AISI 316	1.4408
10.02	Filling and draining plug	Stainless Steel	AISI 304	1.4301	AISI 316	1.4401
10.06	Upper flange	Stainless Steel	AISI 304	1.4301	AISI 316	1.4401
20.00	Outer Case	Stainless Steel	AISI 304	1.4301	AISI 316	1.4401
20.01	Mechanical seal housing	Stainless Steel	AISI 304	1.4301	AISI 316	1.4401
20.05	Filling plugs	Stainless Steel	AISI 304	1.4301	AISI 316	1.4401
30.00	Pump shaft	Stainless Steel	AISI 304	1.4301	AISI 316	1.4401
30.01	Kit Mechanical seal	Silicon Carbide SiC, Graphite, EPDM, Stainless Steel	-	-	-	-
30.02	Mechanical seal fastening kit	Stainless Steel	AISI 304	1.4301	AISI 316	1.4401
30.03	Kit O-rings	EPDM	-	-	-	-
40.00	Stage housing and diffuser	Stainless Steel	AISI 304	1.4301	AISI 316	1.4401
40.01	Stage Centering outlet	Stainless Steel	AISI 304	1.4301	AISI 316	1.4401
40.02	Floating neck ring	PPS	-	-	-	-
40.03	Initial stage housing	Stainless Steel	AISI 304	1.4301	AISI 316	1.4401
40.04	Last Stage with diffuser	Stainless Steel	AISI 304	1.4301	AISI 316	1.4401
40.05	Stage Centering inlet	Stainless Steel	AISI 304	1.4301	AISI 316	1.4401
40.06	Stage housing and diffuser with bearing	Stainless Steel / Tungsten Carbide	AISI 304	1.4301	AISI 316	1.4401
50.00	Impeller	Stainless Steel	AISI 304	1.4301	AISI 316	1.4401
50.01	Impeller spacer	Stainless Steel	AISI 304	1.4301	AISI 316	1.4401
50.02	Intermediary sleeve	Tungsten Carbide	-	-	-	-
50.03	Intermediary sleeve spacer	Stainless Steel	AISI 304	1.4301	AISI 316	1.4401

EV 6-10

MATERIAL IN CONTACT WITH THE LIQUID						
Pos.	PARTS DESCRIPTIONS	Type	MATERIAL			
			X version		N version	
			ASTM/AISI	DIN / EN	ASTM/AISI	DIN / EN
10.00	Pump casing	Stainless Steel	CF 8 / AISI 304	1.4308	CF 8M / AISI 316	1.4408
10.02	Filling and draining plug	Stainless Steel	AISI 304	1.4301	AISI 316	1.4401
10.06	Upper flange	Stainless Steel	AISI 304	1.4301	AISI 316	1.4401
20.00	Outer Case	Stainless Steel	AISI 304	1.4301	AISI 316	1.4401
20.01	Mechanical seal housing	Stainless Steel	AISI 304	1.4301	AISI 316	1.4401
20.05	Filling plugs	Stainless Steel	AISI 304	1.4301	AISI 316	1.4401
30.00	Pump shaft	Stainless Steel	AISI 304	1.4301	AISI 316	1.4401
30.01	Kit Mechanical seal	Silicon Carbide SiC, Graphite, EPDM, Stainless Steel	-	-	-	-
30.02	Mechanical seal fastening kit	Stainless Steel	AISI 304	1.4301	AISI 316	1.4401
30.03	Kit O-rings	EPDM	-	-	-	-
40.00	Stage housing and diffuser	Stainless Steel	AISI 304	1.4301	AISI 316	1.4401
40.01	Stage Centering outlet	Stainless Steel	AISI 304	1.4301	AISI 316	1.4401
40.02	Floating neck ring	PPS	-	-	-	-
40.03	Initial stage housing	Stainless Steel	AISI 304	1.4301	AISI 316	1.4401
40.04	Last Stage with diffuser	Stainless Steel	AISI 304	1.4301	AISI 316	1.4401
40.05	Stage Centering inlet	Stainless Steel	AISI 304	1.4301	AISI 316	1.4401
40.06	Stage housing and diffuser with bearing	Stainless Steel / Tungsten Carbide	AISI 304	1.4301	AISI 316	1.4401
50.00	Impeller	Stainless Steel	AISI 304	1.4301	AISI 316	1.4401
50.01	Impeller spacer	Stainless Steel	AISI 304	1.4301	AISI 316	1.4401
50.02	Intermediary sleeve	Tungsten Carbide	-	-	-	-
50.03	Intermediary sleeve spacer	Stainless Steel	AISI 304	1.4301	AISI 316	1.4401

EV 15-20

MATERIAL IN CONTACT WITH THE LIQUID						
Pos.	PARTS DESCRIPTIONS	Type	MATERIAL			
			X version		N version	
			ASTM/AISI	DIN / EN	ASTM/AISI	DIN / EN
10.00	Pump casing	Stainless Steel	CF 8 / AISI 304	1.4301	CF 8M / AISI 316	1.4408
10.02	Filling and draining plug	Stainless Steel	AISI 304	1.4301	AISI 316	1.4401
10.06	Upper Flange	Stainless Steel	AISI 304	1.4301	CF 8M / AISI 316	1.4408
20.00	Outer Case	Stainless Steel	AISI 304	1.4301	AISI 316	1.4401
20.01	Mechanical seal housing	Stainless Steel	AISI 304	1.4301	CF 8M / AISI 316	1.4408 / 1.4401
20.05	Filling plugs	Stainless Steel	AISI 304	1.4301	AISI 316	1.4401
30.00	Pump shaft	Stainless Steel	AISI 304	1.4301	AISI 316	1.4401
30.01	Kit Mechanical seal	Silicon Carbide SiC, Graphite, EPDM, Stainless Steel	-	-	-	-
30.02	Mechanical seal fastening kit	Stainless Steel	AISI 304	1.4301	AISI 316	1.4401
30.03	Kit O-rings	EPDM	-	-	-	-
40.00	Stage housing and diffuser	Stainless Steel	AISI 304	1.4301	AISI 316	1.4401
40.01	Stage Centering outlet	Stainless Steel	AISI 304	1.4301	AISI 316	1.4401
40.02	Floating neck ring	PPS	-	-	-	-
40.03	Initial stage housing	Stainless Steel	AISI 304	1.4301	AISI 316	1.4401
40.04	Last Stage with diffuser	Stainless Steel	AISI 304	1.4301	AISI 316	1.4401
40.06	Stage housing and diffuser with bearing	Stainless Steel / Tungsten carbide	AISI 304	1.4301	AISI 316	1.4401
50.00	Impeller	Stainless Steel	AISI 304	1.4301	AISI 316	1.4401
50.01	Impeller spacer	Stainless Steel	AISI 304	1.4301	AISI 316	1.4401
50.02	Intermediary sleeve	Tungsten Carbide	-	-	-	-
50.03	Intermediary sleeve spacer	Stainless Steel	AISI 304	1.4301	AISI 316	1.4401

EV 30-45

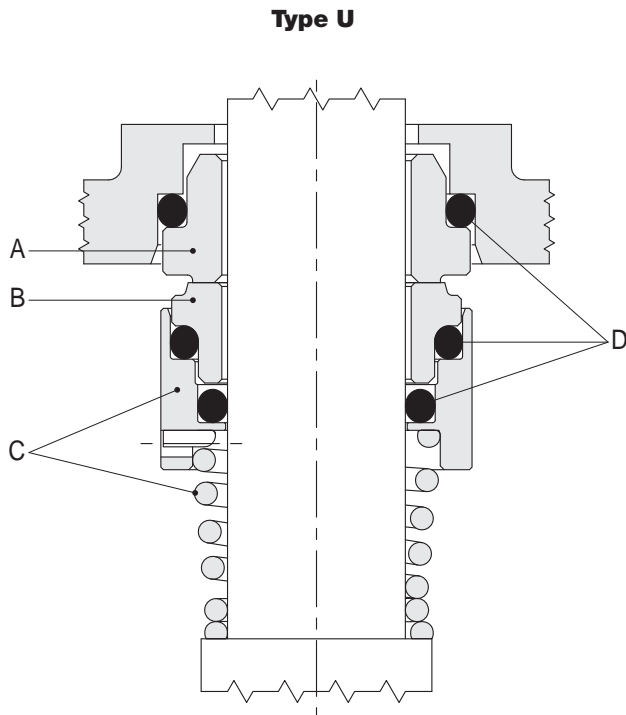
MATERIAL IN CONTACT WITH THE LIQUID						
Pos.	PARTS DESCRIPTIONS	Type	MATERIAL			
			G version		N version	
			ASTM/AISI	DIN / EN	ASTM/AISI	DIN / EN
10.00	Pump casing	Cast Iron / Stainless Steel	A48 Class 35	GJL-250	CF 8M / AISI 316	1.4408
10.02	Draining plug	Stainless Steel	AISI 304	1.4301	AISI 316	1.4401
10.06	Upper Flange	Stainless Steel	CF 8 / AISI 304	1.4308	CF 8M / AISI 316	1.4408
20.00	Outer Case	Stainless Steel	AISI 304	1.4301	AISI 316	1.4401
20.01	Mechanical seal housing	Stainless Steel	CF 8 / AISI 304	1.4308	CF 8M / AISI 316	1.4408
20.05	Filling plugs	Stainless Steel	AISI 304	1.4301	AISI 316	1.4401
30.00	Pump shaft	Stainless Steel	AISI 431	1.4057	AISI 329	1.4460
30.01	Kit Mechanical seal	Silicon Carbide SiC, Graphite, EPDM, Stainless Steel	-	-	-	-
30.02	Mechanical seal fastening kit	Stainless Steel	AISI 316	1.4401	AISI 316	1.4401
30.03	Kit O-rings	EPDM	-	-	-	-
40.00	Stage housing and diffuser	Stainless Steel / Graphite	AISI 304	1.4301	AISI 316	1.4401
40.02	Floating neck ring	PTFE	-	-	-	-
40.05	Stage Centering inlet	Stainless Steel	AISI 316	1.4401	AISI 316	1.4401
40.06	Stage housing and diffuser with bearing	Stainless Steel	AISI 304	1.4301	AISI 316	1.4401
40.07	Flange clamping neck ring	Stainless Steel	AISI 304	1.4301	AISI 316	1.4401
40.08	Spring ring	Stainless Steel	AISI 316	1.4401	AISI 316	1.4401
50.00	Impeller	Stainless Steel	AISI 304	1.4301	AISI 316	1.4401
51.01	Split cone	Stainless Steel	AISI 304	1.4301	AISI 316	1.4401
51.02	Intermediary sleeve nut	Stainless Steel / Tungsten Carbide	AISI 316	1.4401	AISI 316	1.4401
51.03	Journal sleeve	Stainless Steel / Tungsten Carbide	AISI 316	1.4401	AISI 316	1.4401
51.04	Split cone nut	Stainless Steel	AISI 304	1.4301	AISI 316	1.4401
51.05	Intermediate impeller with screw	Stainless Steel	AISI 304	1.4301	AISI 316	1.4401

EV 65-95

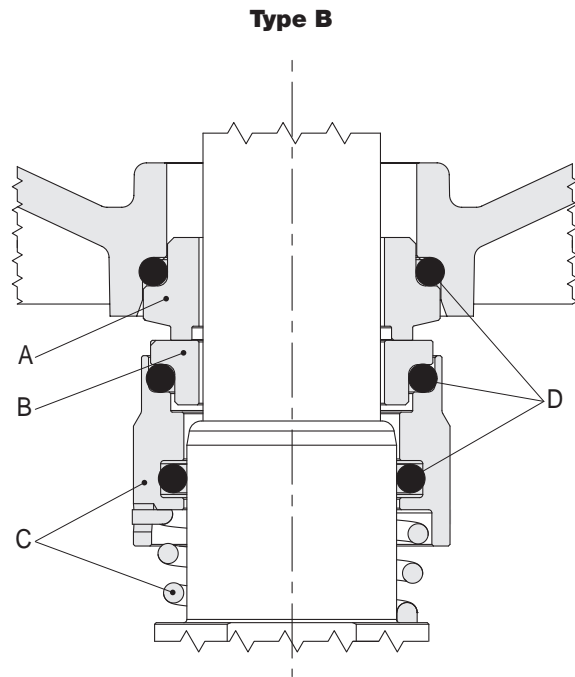
MATERIAL IN CONTACT WITH THE LIQUID						
Pos.	PARTS DESCRIPTIONS	Type	MATERIAL			
			G version		N version	
			ASTM/AISI	DIN / EN	ASTM/AISI	DIN / EN
10.00	Pump casing	Cast Iron / Stainless Steel	A48 Class 35	GJL-250	CF 8M / AISI 316	1.4408
10.02	Draining plug	Stainless Steel	AISI 304	1.4301	AISI 316	1.4401
10.06	Upper Flange	Stainless Steel	CF 8 / AISI 304	1.4308	CF 8M / AISI 316	1.4408
20.00	Outer Case	Stainless Steel	AISI 304	1.4301	AISI 316	1.4401
20.01	Mechanical seal housing	Stainless Steel	CF 8 / AISI 304	1.4308	CF 8M / AISI 316	1.4408
20.05	Filling plugs	Stainless Steel	AISI 304	1.4301	AISI 316	1.4401
30.00	Pump shaft	Stainless Steel	AISI 431	1.4057	AISI 329	1.4460
30.01	Kit Mechanical seal	Silicon Carbide SiC, Graphite, EPDM, Stainless Steel	-	-	-	-
30.02	Mechanical seal fastening kit	Stainless Steel	AISI 316	1.4401	AISI 316	1.4401
30.03	Kit O-rings	EPDM	-	-	-	-
40.00	Stage housing and diffuser	Stainless Steel / Graphite	AISI 304	1.4301	AISI 316	1.4401
40.01	Stage Centering outlet	Stainless Steel	CF 8 / AISI 304	1.4308	CF 8M / AISI 316	1.4408
40.02	Floating neck ring	PTFE	-	-	-	-
40.05	Stage Centering inlet	Stainless Steel	AISI 316	1.4401	AISI 316	1.4401
40.06	Stage housing and diffuser with bearing	Stainless Steel	AISI 304	1.4301	AISI 316	1.4401
40.07	Flange clamping neck ring	Stainless Steel	AISI 304	1.4301	AISI 316	1.4401
40.08	Spring ring	Stainless Steel	AISI 316	1.4401	AISI 316	1.4401
50.00	Impeller	Stainless Steel	AISI 304	1.4301	AISI 316	1.4401
51.01	Split cone	Stainless Steel	AISI 304	1.4301	AISI 316	1.4401
51.02	Intermediary sleeve nut	Stainless Steel / Tungsten Carbide	AISI 316	1.4401	AISI 316	1.4401
51.03	Journal sleeve	Stainless Steel / Tungsten Carbide	AISI 316	1.4401	AISI 316	1.4401
51.04	Split cone nut	Stainless Steel	AISI 304	1.4301	AISI 316	1.4401
51.05	Intermediate impeller with screw	Stainless Steel	AISI 304	1.4301	AISI 316	1.4401

Mechanical seal specifications

(in accordance with EN 12756)



00114085 09/2012



00114115 02/2015

Standard version

Model	Type				Position				Temperature
					A Stationary part	B Rotating part	C Other components	D Elastomers	
E1	B	Q	G	E	Graphite	Silicon carbide	AISI 316	EPDM	-30°C +120°C

Available on request

Model	Type				Position				Temperature (°C)
					A Stationary part	B Rotating part	C Other components	D Elastomers	
E2	Q	Q	G	E	Silicon carbide	Silicon carbide	AISI 316	EPDM	-10°C +120°C
V3	Q	Q	G	V	Silicon carbide	Silicon carbide	AISI 316	FKM	-10°C +120°C
V4	B	Q	G	V	Graphite	Silicon carbide	AISI 316	FKM	-10°C +120°C
E5	U	U	G	E	Tungsten carbide	Tungsten carbide	AISI 316	EPDM	-10°C +120°C
V6	U	U	G	V	Tungsten carbide	Tungsten carbide	AISI 316	FKM	-10°C +120°C

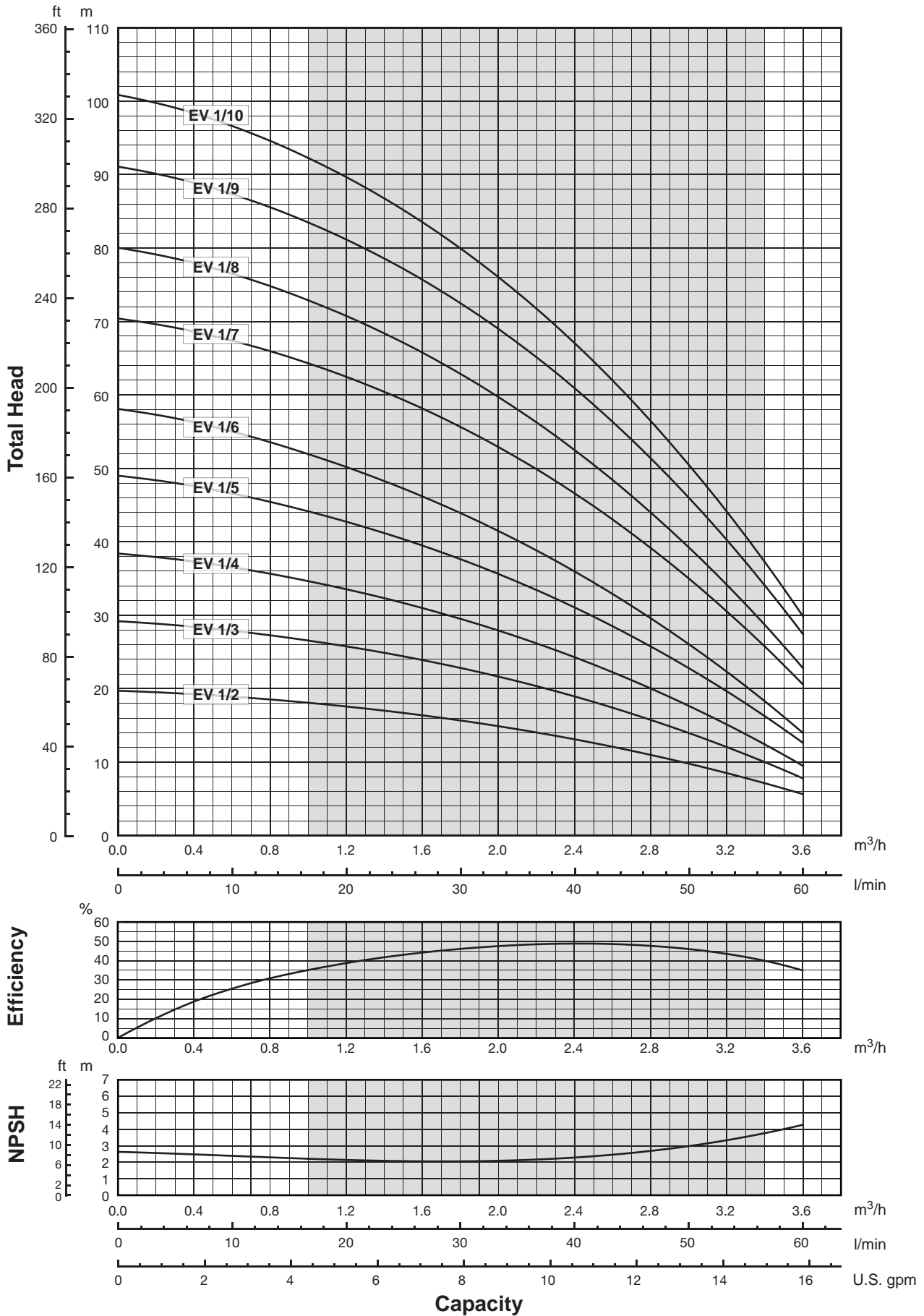
Type	Material
B	Graphite
E	EPDM
G	AISI 316
Q	Silicon carbide
V	FKM
U	Tungsten carbide

Compatibility of fluids and materials

Liquids (aqueous solutions)	Concentration (%)	Temperature Min/Max (°C)	EV models		
			G	I	N
Acetic acid	10 ÷ 40	+18 +70		E1	E1
Aluminium sulfate	10 ÷ 25	+5 +50			E2
Ammonia in water	25	-20 +50		E1	E1
Ammonium sulfate	10	+5 +60			E2
Benzoic acid	4	+20 +80		V4	V4
Caustic soda	25	+5 +70		E2	E2
Chloroform	100	-10 +30		V4	V4
Citric acid	5	+5 +70		E1	E1
Copper sulfate	1 ÷ 20	+5 +30			V3
Deionised, demineralised water	100	+5 +110		E1	E1
Diathermic oil	100	+90 +120	V4	V4	V4
Emulsion oil and water any	10 ÷ 50	+15 +90	V4	V4	V4
Ethylene glycol	10 ÷ 30	-18 +120		E1	E1
ferrous sulfate and ferric sulfate	10	+5 +30			E1
Formic acid	5	+5 +25		E1	E1
Glycerine	100	+90 +120	E1	E1	E1
Hydrochloric acid	2 max	+5 +25			V3
Mineral oil	100	+90 +120	V4	V4	V4
Nitric acid	40	+5 +30		V3	V3
Perchloroethylene	100	-10 +30	V4	V4	V4
Phosphates-polyphosphates	10	+5 +90			E1
Phosphoric acid	5	+5 +30			E1
Propylene glycol	30	-10 +100	V3	V3	V3
Sea water	max 35000 ppm	+2 +60			E1
Sodium bicarbonate (Baking soda)	6	+5 +60			E1
Sodium hypochlorite	1	+5 +25			V3
Sodium nitrate	10	+5 +60	E1		E1
Sodium sulfate	15	+5 +40	E2	E2	E2
Sulphuric acid	2	+5 +25			V4
Tannic acid	20	+5 +50			E1
Tartaric acid	50	+5 +25		V3	V3
Trichloroethylene	100	-10 +40	V4	V4	V4
Vegetable oil	100	+70 +110	E1	E1	E1
Water	100	+5 +120	E1	E1	E1

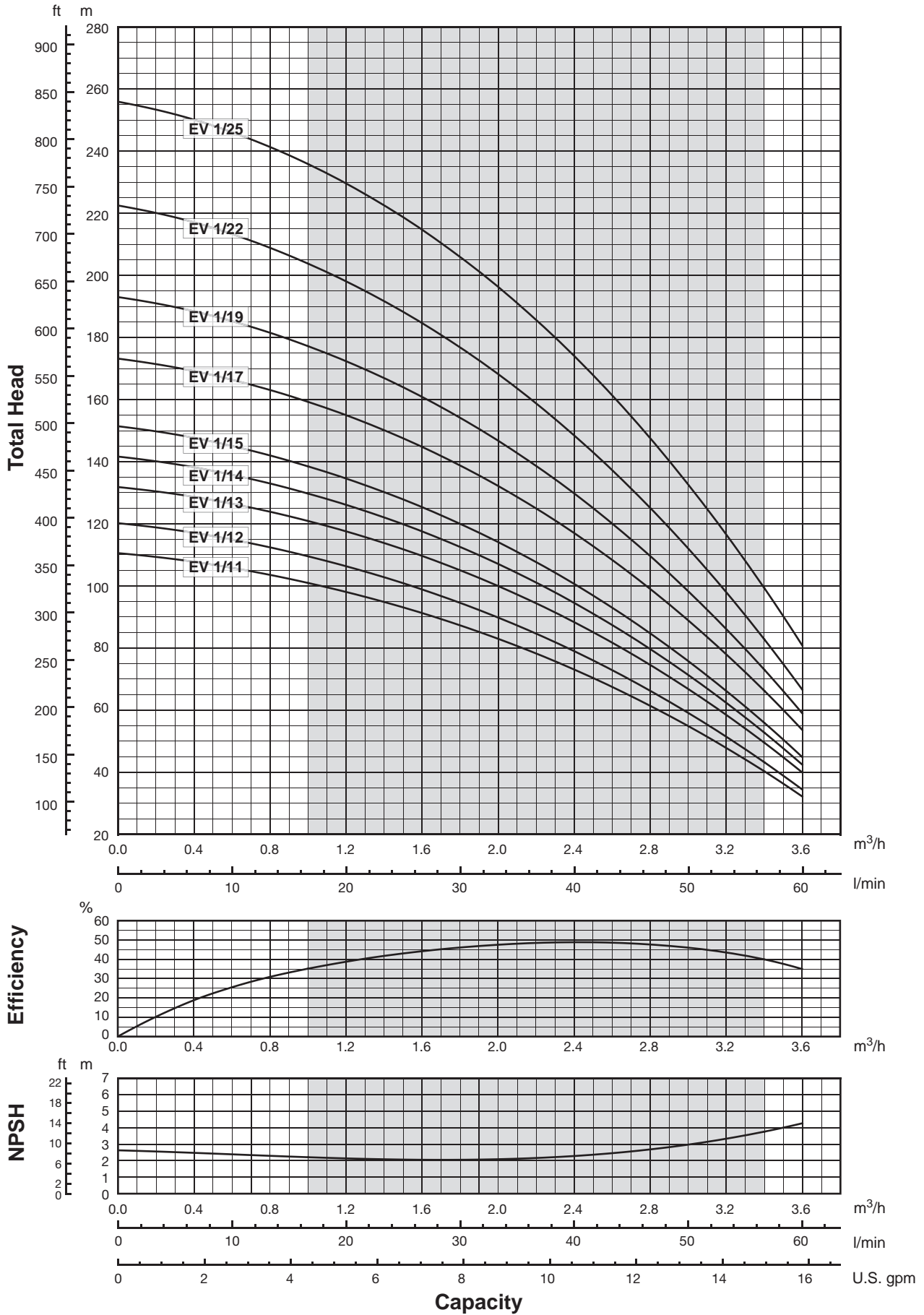
The table is to be considered as a general guide. It is important to consider the specific working conditions; in particular to consider the concentration of the pumped liquid, the specific weight of the liquid and/or the viscosity, the liquid temperature and pressure. All these conditions are relevant for the motor and pump performance. When pumping dangerous liquids, it is recommended to take safety precautions. For further details, please contact us.

Performance curves 60Hz



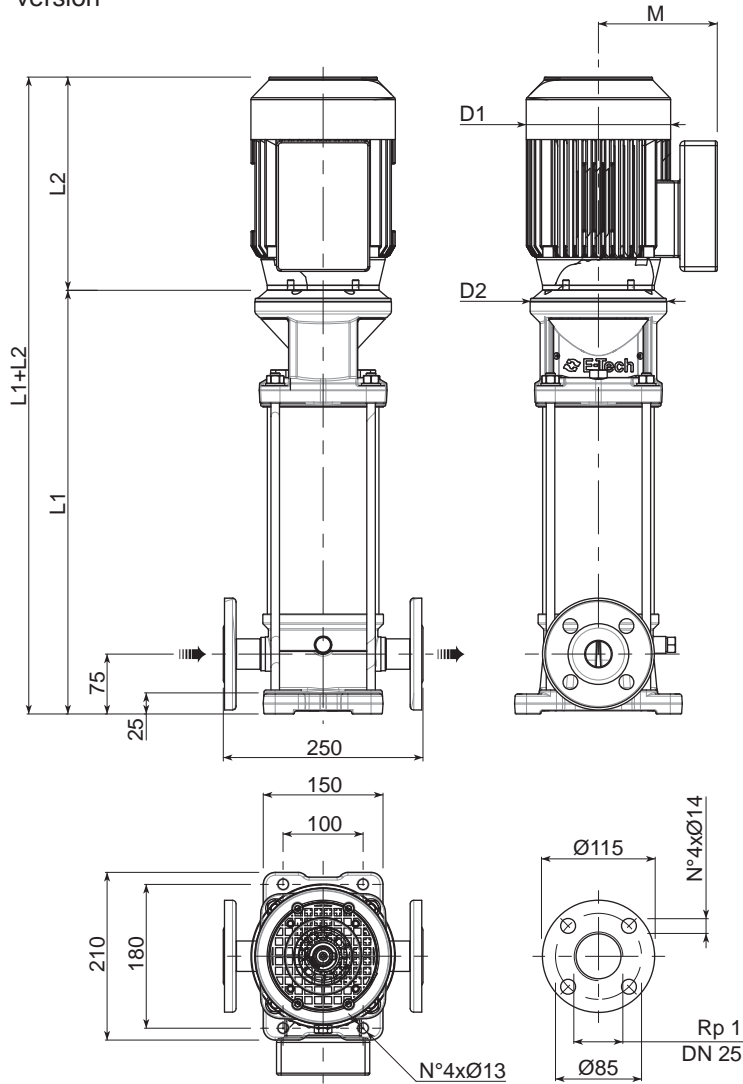
The hydraulic characteristics are guaranteed, according to ISO standard 9906:2012, grade 3B.

Performance curves 60Hz



The hydraulic characteristics are guaranteed, according to ISO standard 9906:2012, grade 3B.

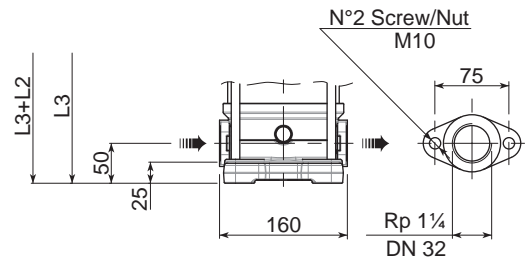
F version



F version Round flanges on body type PN25: the pump is supplied without counterflanges (Optional accessories, including bolts and joints).

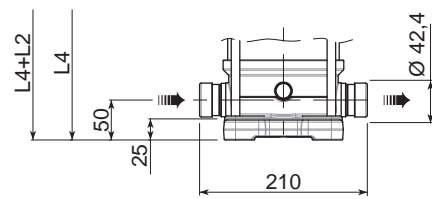
T version

Available from EV1/2 to EV1/15



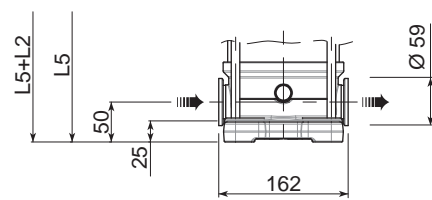
T version Oval flanges on body type PN16: the pump is supplied without threaded oval counter flanges (Optional accessories, including bolts and joints).

V version



V version Connections with rapid fittings type "Victaulic": the pump is supplied without the collars (Optional accessories).

C version



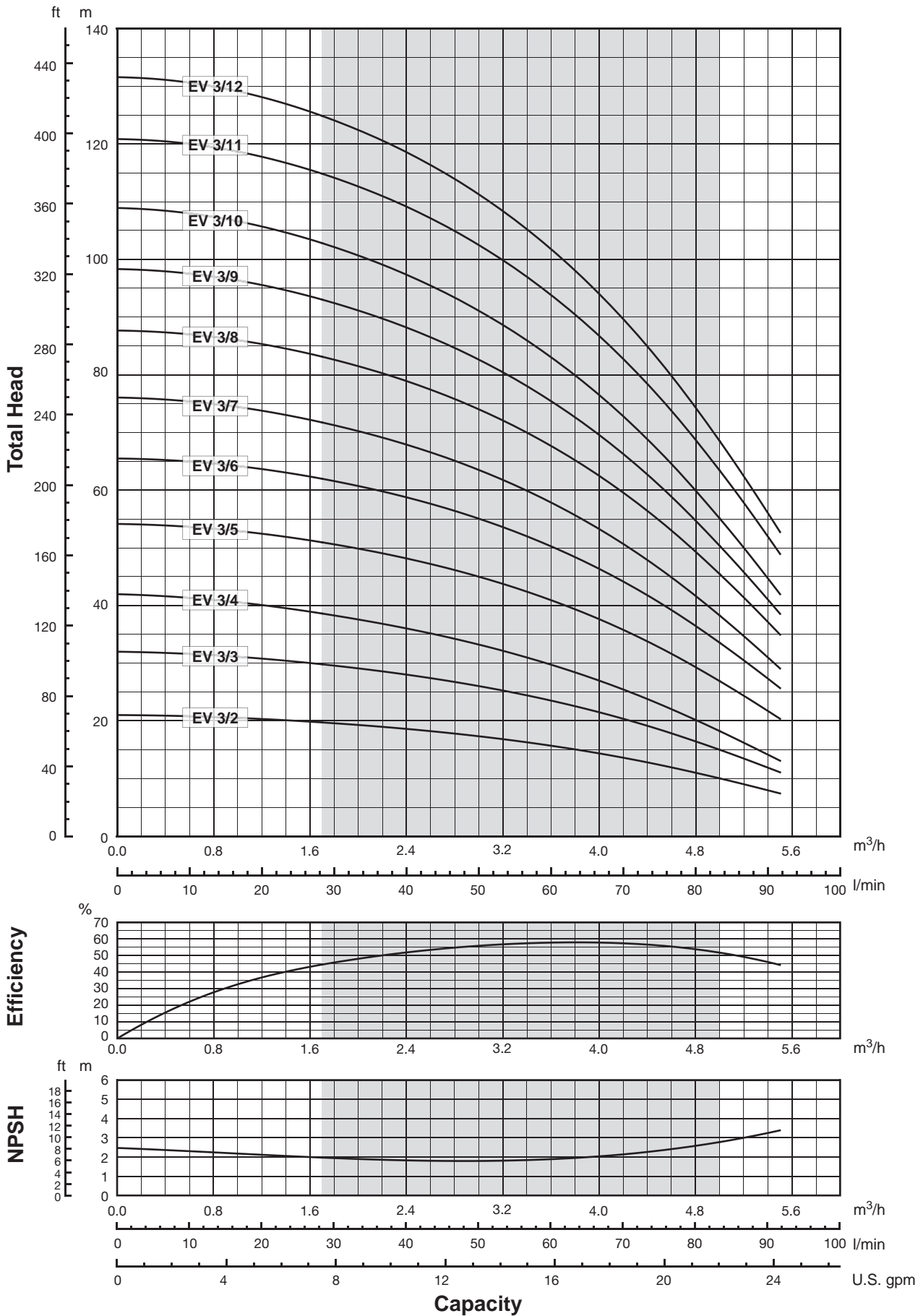
C version Connections with round fittings type Clamp-FlexiClamp: the pump is supplied without collars (Optional accessories).

0011401411 02/2015

Pump Model	Motor		Dimensions (mm)							Weight (kg)					
	kW	Dim	L1 F	1-PHASE	3-PHASE	L3 T	L4 V	L5 C	1-PHASE M	3-PHASE M	1-PHASE D1	3-PHASE D1	D2	Pump	Electric Pump
EV 1/2	0,37	71	312,5	215	215	287,5	287,5	287,5	129	112	142	142	170	15	20,8
EV 1/3	0,37	71	335	215	215	310	310	310	129	112	142	142	170	15	20,8
EV 1/4	0,37	71	357,5	215	215	332,5	332,5	332,5	129	112	142	142	170	15,5	21,3
EV 1/5	0,55	71	380	215	215	355	355	355	129	112	142	142	170	16	22,2
EV 1/6	0,55	71	402,5	215	215	377,5	377,5	377,5	129	112	142	142	170	16,5	22,7
EV 1/7	0,75	80	425	232	232	400	400	400	150	129	160	160	170	17	26,5
EV 1/8	0,75	80	447,5	232	232	422,5	422,5	422,5	150	129	160	160	170	17,5	27
EV 1/9	1,1	80	470	232	232	445	445	445	150	129	160	160	170	18	29,1
EV 1/10	1,1	80	492,5	232	232	467,5	467,5	467,5	150	129	160	160	170	18,5	29,6
EV 1/11	1,1	80	515	232	232	490	490	490	150	129	160	160	170	19	30,1
EV 1/12	1,1	80	537,5	232	232	512,5	512,5	512,5	150	129	160	160	170	19,5	30,6
EV 1/13	1,5	90	570	267	267	545	545	545	160	138	180	180	170	20,5	34,5
EV 1/14	1,5	90	592,5	267	267	567,5	567,5	567,5	160	138	180	180	170	21	35
EV 1/15	1,5	90	615	267	267	590	590	590	160	138	180	180	170	21,5	35,5
EV 1/17	2,2	90	660	267	267	-	635	635	160	138	180	180	170	22	38
EV 1/19	2,2	90	705	267	267	-	680	680	160	138	180	180	170	23	39
EV 1/22	2,2	90	772,5	267	267	-	747,5	747,5	160	138	180	180	170	24,5	40,5
EV 1/25	3	100	850	-	306	-	825	825	-	145	-	196	170	26,5	49,3

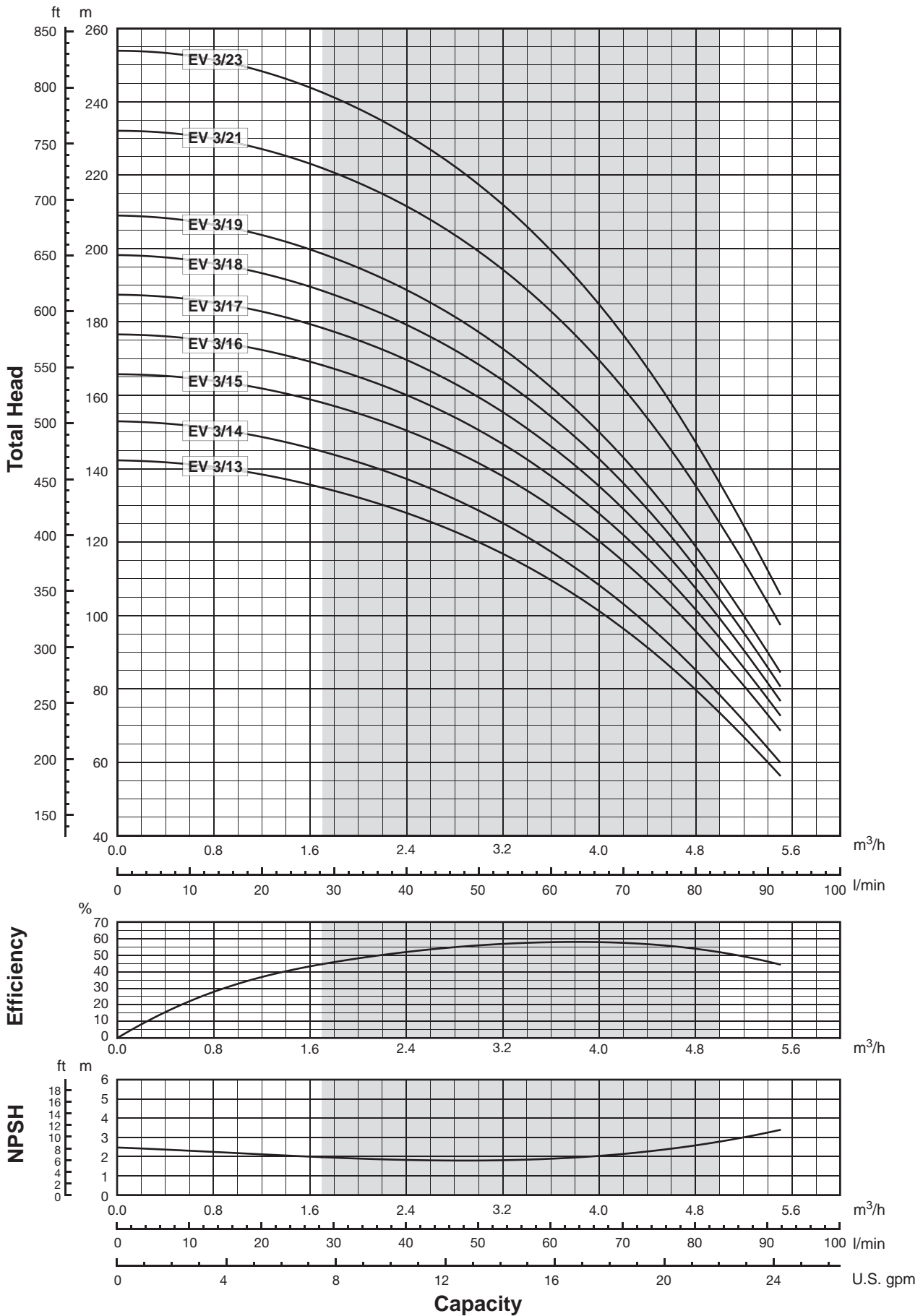
EV 3

Performance curves 60Hz



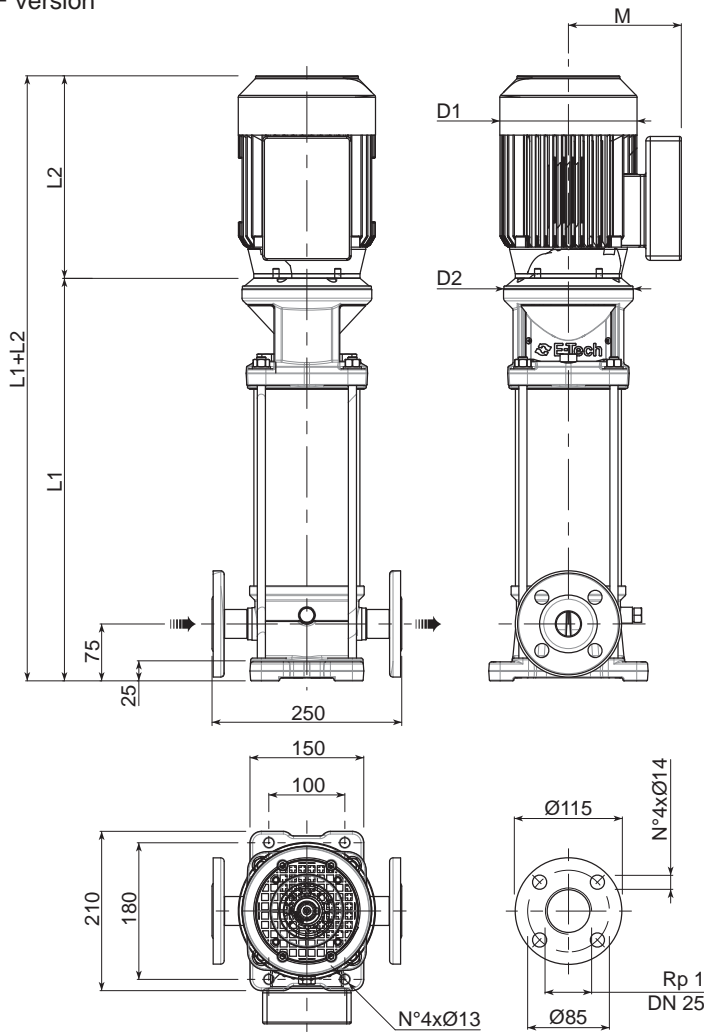
The hydraulic characteristics are guaranteed, according to ISO standard 9906:2012, grade 3B.

Performance curves 60Hz



The hydraulic characteristics are guaranteed, according to ISO standard 9906:2012, grade 3B.

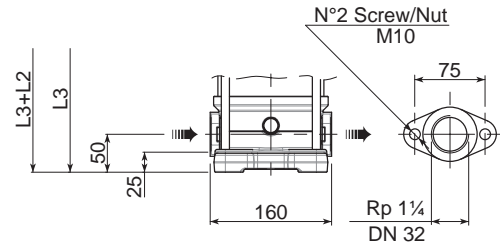
F version



F version Round flanges on body type PN25: the pump is supplied without counterflanges (Optional accessories, including bolts and joints).

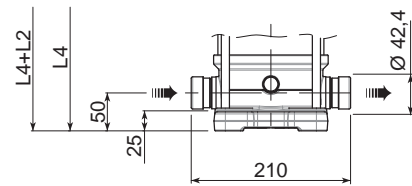
T version

Available from EV3/2 to EV3/14



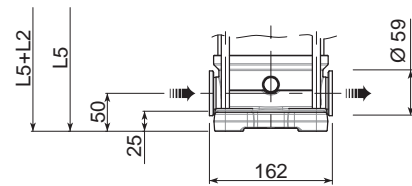
T version Oval flanges on body type PN16: the pump is supplied without threaded oval counter flanges (Optional accessories, including bolts and joints).

V version



V version Connections with rapid fittings type "Victaulic": the pump is supplied without the collars (Optional accessories).

C version



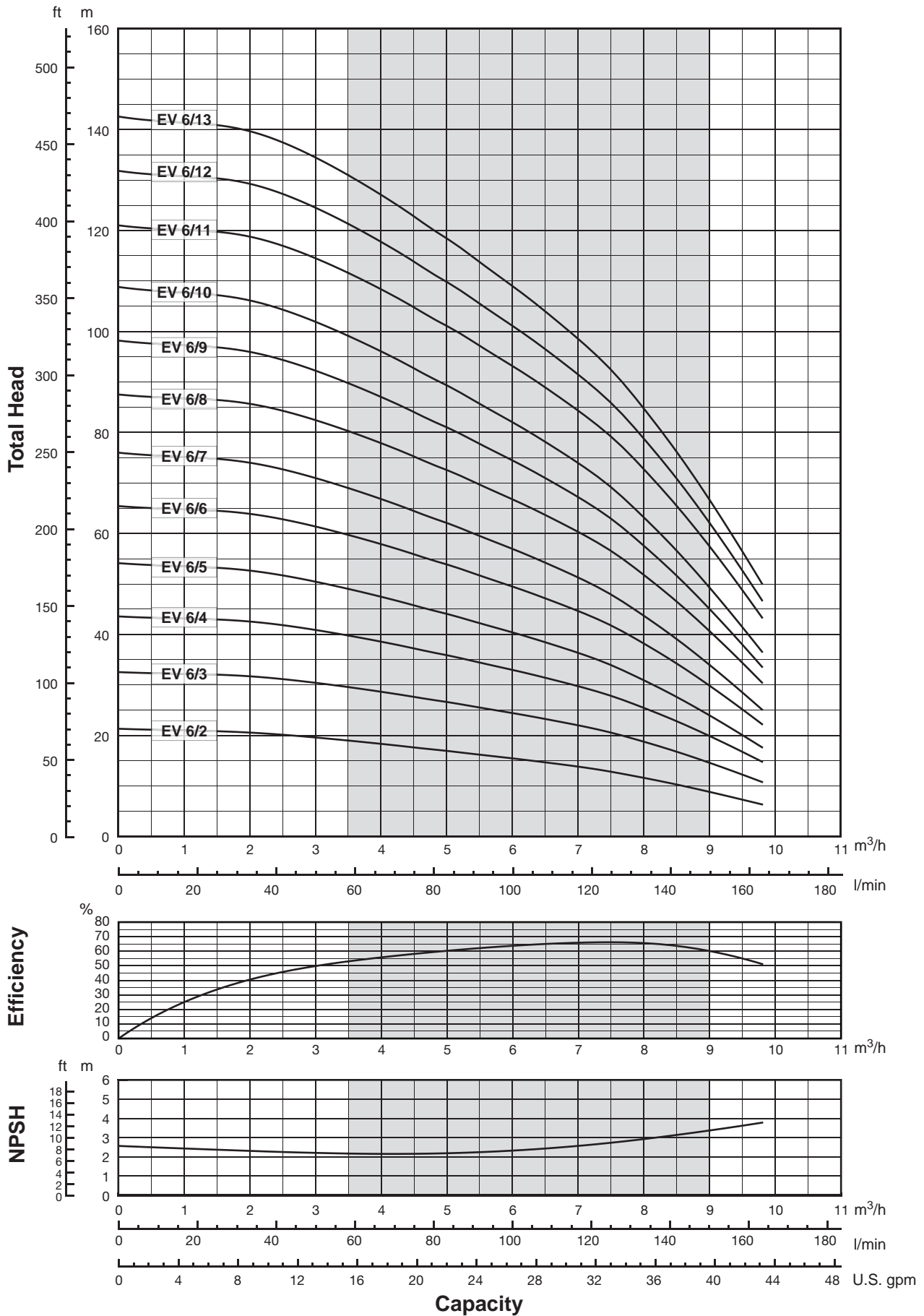
C version Connections with round fittings type Clamp-FlexiClamp: the pump is supplied without collars (Optional accessories).

0011401411 02/2015

Pump Model	Motor		Dimensions (mm)									Weight (kg)			
	kW	Dim	L1 F	L2 1-PHASE	L2 3-PHASE	L3 T	L4 V	L5 C	M 1-PHASE	M 3-PHASE	D1 1-PHASE	D1 3-PHASE	D2	Pump	Electric Pump
EV 3/2	0,37	71	312,5	216	216	287,5	287,5	287,5	129	112	142	142	170	15	20,8
EV 3/3	0,55	71	335	216	216	310	310	310	129	112	142	142	170	15	21,2
EV 3/4	0,55	71	357,5	216	216	332,5	332,5	332,5	129	112	142	142	170	15,5	21,7
EV 3/5	0,75	80	380	232	232	355	355	355	150	129	160	160	170	16	25,5
EV 3/6	1,1	80	402,5	232	232	377,5	377,5	377,5	150	129	160	160	170	16,5	27,6
EV 3/7	1,1	80	425	232	232	400	400	400	150	129	160	160	170	17	28,1
EV 3/8	1,5	90	457,5	267	267	432,5	432,5	432,5	160	138	180	180	170	18	32
EV 3/9	1,5	90	480	267	267	455	455	455	160	138	180	180	170	18,5	32,5
EV 3/10	1,5	90	502,5	267	267	477,5	477,5	477,5	160	138	180	180	170	19	33
EV 3/11	2,2	90	525	267	267	500	500	500	160	138	180	180	170	19,5	35,5
EV 3/12	2,2	90	547,5	267	267	522,5	522,5	522,5	160	138	180	180	170	20	36
EV 3/13	2,2	90	570	267	267	545	545	545	160	138	180	180	170	20,5	36,5
EV 3/14	2,2	90	592,5	267	267	567,5	567,5	567,5	160	138	180	180	170	21	37
EV 3/15	2,2	90	615	267	267	-	590	590	160	138	180	180	170	21,5	37,5
EV 3/16	3	100	647,5	-	306	-	622,5	622,5	-	145	-	196	170	22,5	45,3
EV 3/17	3	100	670	-	306	-	645	645	-	145	-	196	170	23	45,8
EV 3/18	3	100	692,5	-	306	-	667,5	667,5	-	145	-	196	170	23,5	46,3
EV 3/19	3	100	715	-	306	-	690	690	-	145	-	196	170	24	46,8
EV 3/21	4	112	760	-	306	-	735	735	-	145	-	196	170	25	51,5
EV 3/23	4	112	805	-	306	-	780	780	-	145	-	196	170	25,5	52

EV 6

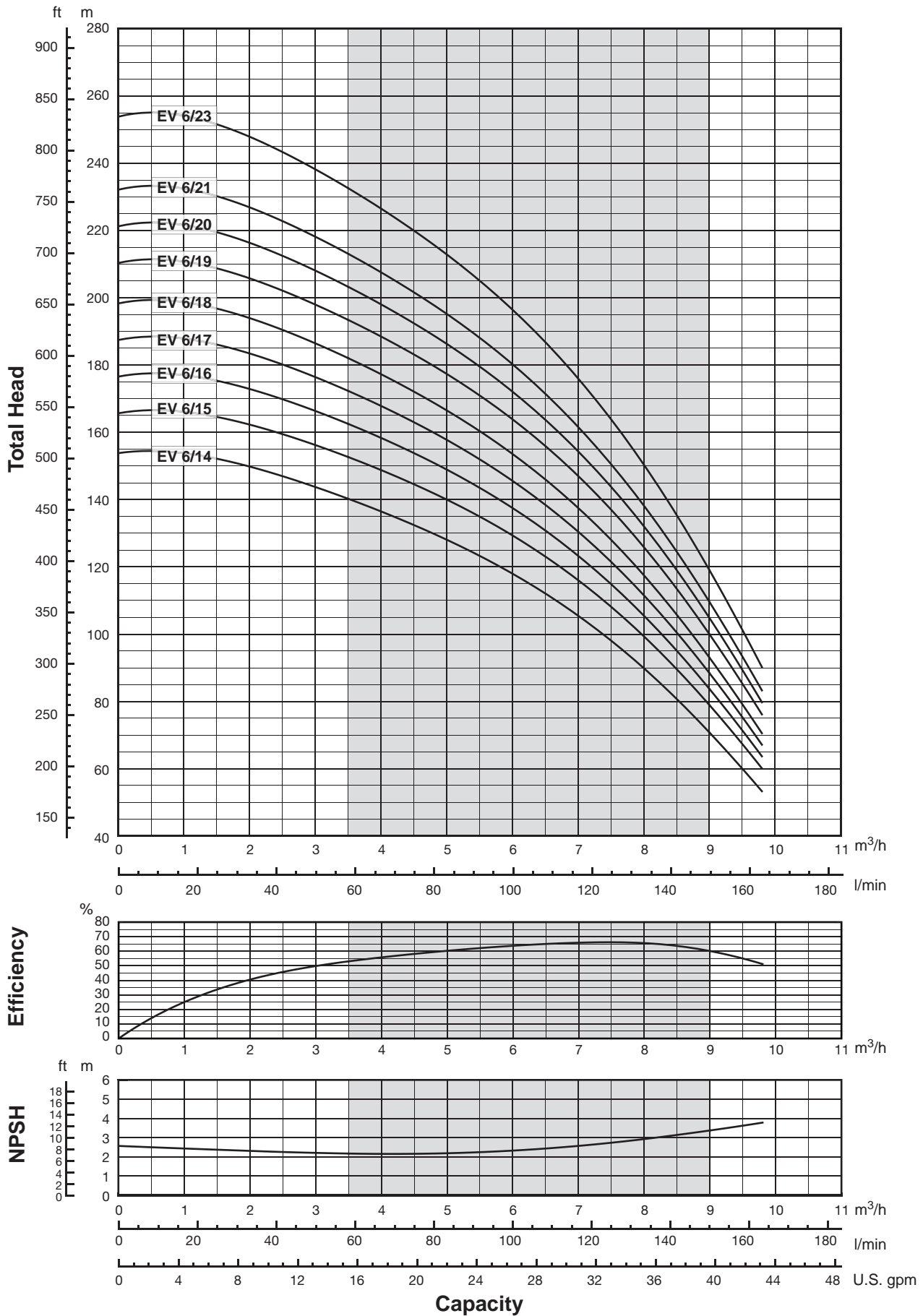
Performance curves 60Hz



The hydraulic characteristics are guaranteed, according to ISO standard 9906:2012, grade 3B.

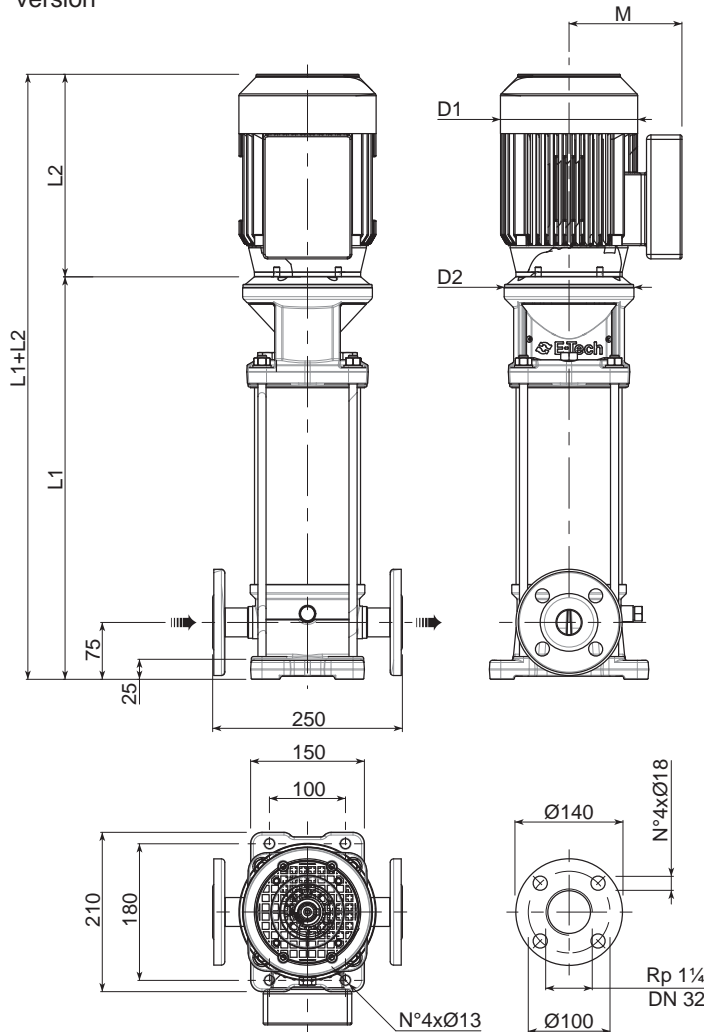
EV 6

Performance curves 60Hz



The hydraulic characteristics are guaranteed, according to ISO standard 9906:2012, grade 3B.

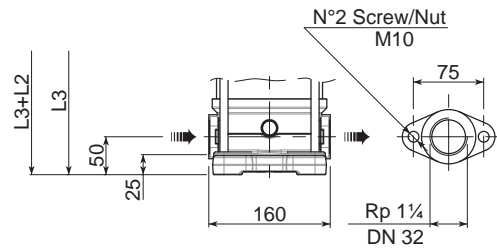
F version



F version Round flanges on body type PN25: the pump is supplied without counterflanges (Optional accessories, including bolts and joints).

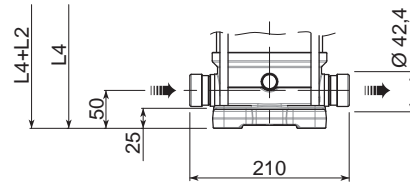
T version

Available from EV6/2 to EV6/14



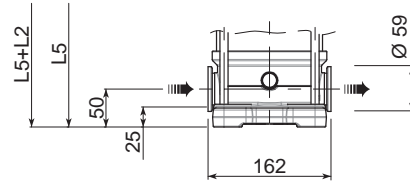
T version Oval flanges on body type PN16: the pump is supplied without threaded oval counter flanges (Optional accessories, including bolts and joints).

V version



V version Connections with rapid fittings type "Victaulic": the pump is supplied without the collars (Optional accessories).

C version

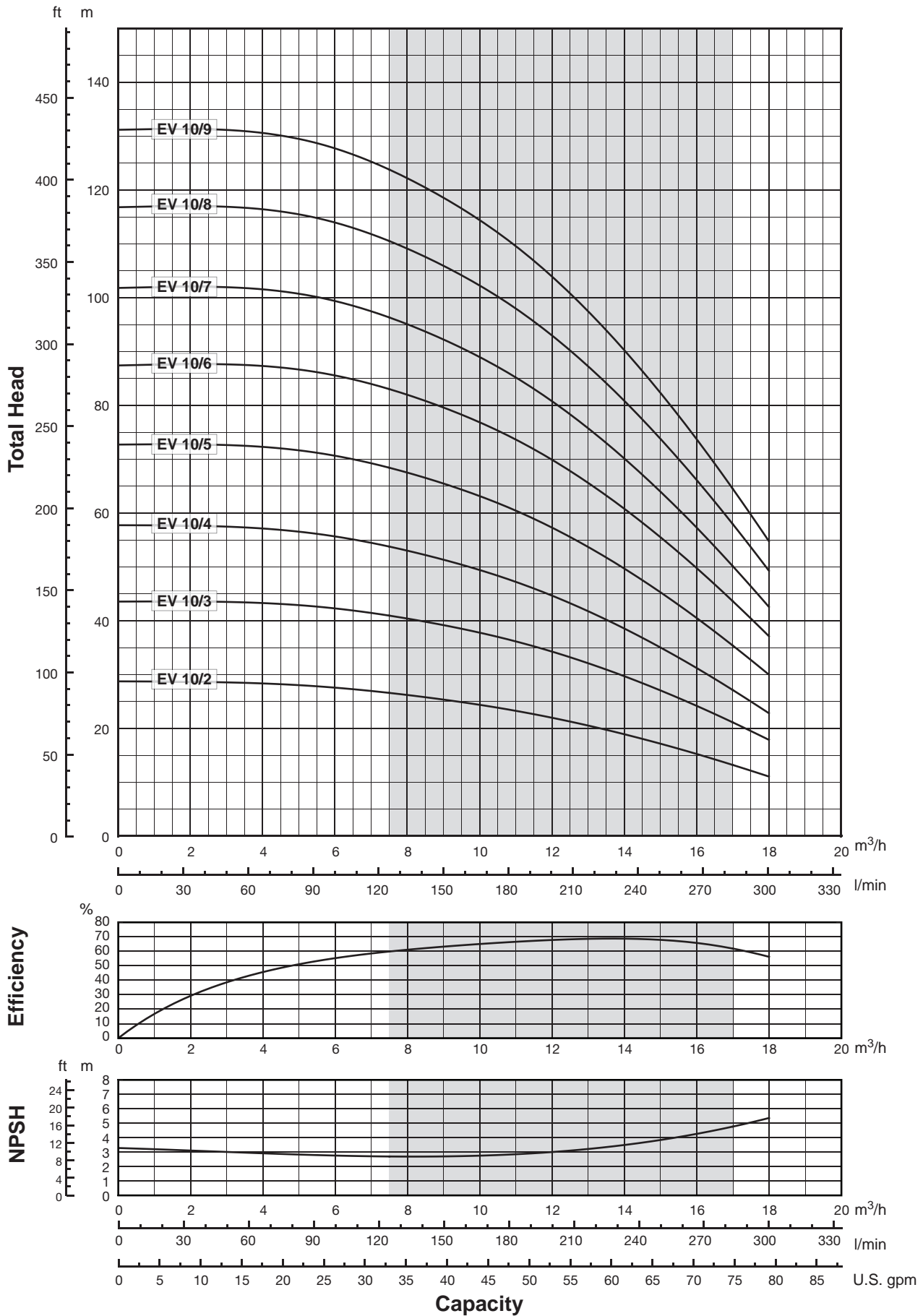


C version Connections with round fittings type Clamp-FlexiClamp: the pump is supplied without collars (Optional accessories).

0011401411 02/2015

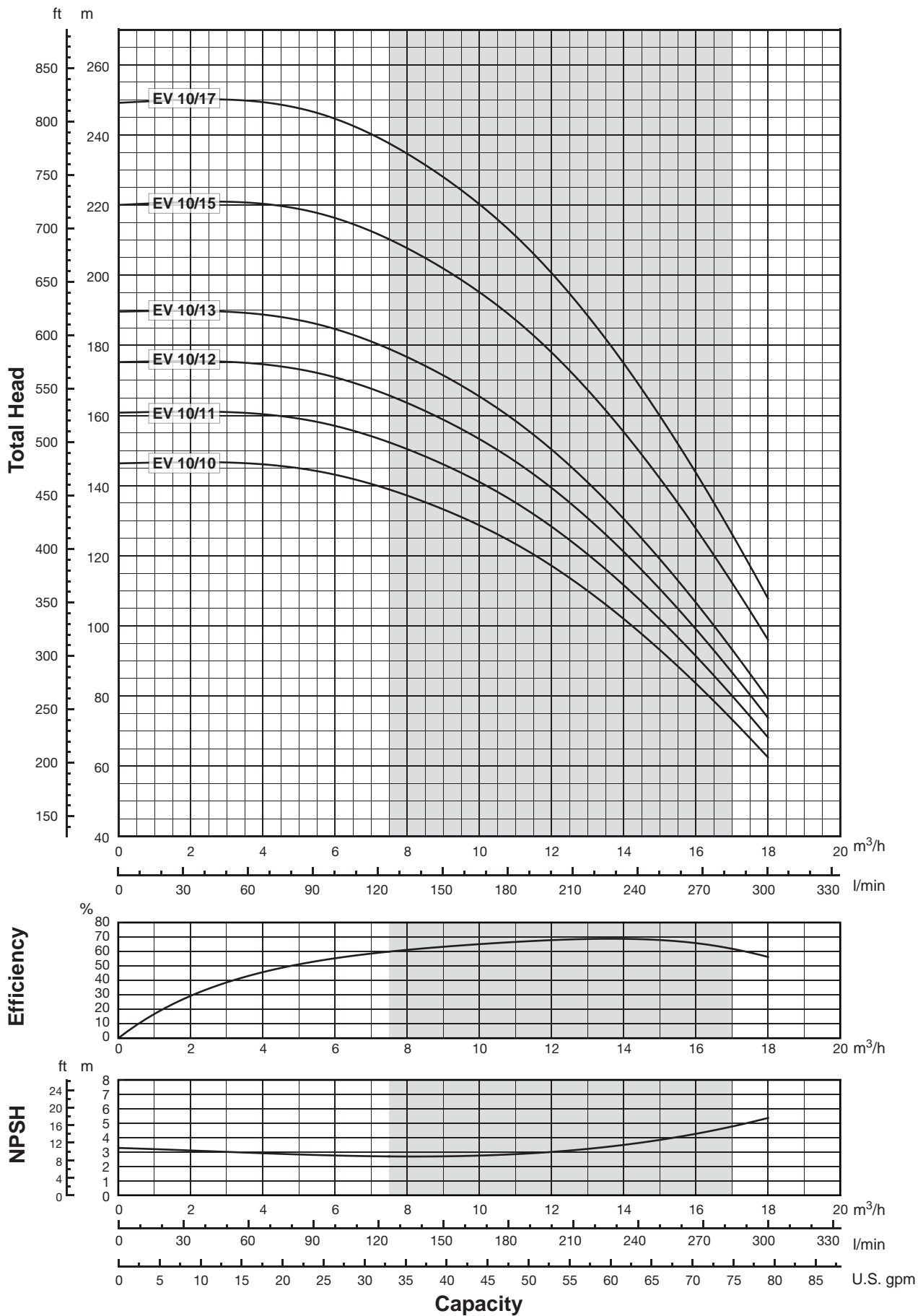
Pump Model	Motor		Dimensions (mm)						M		D1		D2	Weight (kg)	
	kW	Dim	L1 F	1-PHASE	3-PHASE	L3 T	L4 V	L5 C	1-PHASE	3-PHASE	1-PHASE	3-PHASE		Pump	Electric Pump
EV 6/2	0,55	71	319,5	216	216	294,5	294,5	294,5	129	112	142	142	170	15	21,2
EV 6/3	0,75	80	345,5	232	232	320,5	320,5	320,5	150	129	160	160	170	15,5	25
EV 6/4	1,1	80	371,5	232	232	346,5	346,5	346,5	150	129	160	160	170	16	27,1
EV 6/5	1,1	80	397,5	232	232	372,5	372,5	372,5	150	129	160	160	170	16,5	27,6
EV 6/6	1,5	90	433,5	267	267	408,5	408,5	408,5	160	138	180	180	170	17,5	31,5
EV 6/7	1,5	90	459,5	267	267	434,5	434,5	434,5	160	138	180	180	170	18,5	32,5
EV 6/8	2,2	90	485,5	267	267	460,5	460,5	460,5	160	138	180	180	170	19	35
EV 6/9	2,2	90	511,5	267	267	486,5	486,5	486,5	160	138	180	180	170	19,5	35,5
EV 6/10	2,2	90	537,5	267	267	512,5	512,5	512,5	160	138	180	180	170	20	36
EV 6/11	3	100	573,5	-	306	548,5	548,5	548,5	-	145	-	196	170	21	43,8
EV 6/12	3	100	599,5	-	306	574,5	574,5	574,5	-	145	-	196	170	21,5	44,3
EV 6/13	3	100	625,5	-	306	600,5	600,5	600,5	-	145	-	196	170	22	44,8
EV 6/14	3	100	651,5	-	306	626,5	626,5	626,5	-	145	-	196	170	22,5	45,3
EV 6/15	4	112	677,5	-	306	-	652,5	652,5	-	145	-	196	170	23	49,5
EV 6/16	4	112	703,5	-	306	-	678,5	678,5	-	145	-	196	170	23,5	50
EV 6/17	4	112	729,5	-	306	-	704,5	704,5	-	145	-	196	170	24	50,5
EV 6/18	4	112	755,5	-	306	-	730,5	730,5	-	145	-	196	170	24,5	51
EV 6/19	5,5	132	957	-	328	-	932	932	-	160	-	225	300	44,5	78,1
EV 6/20	5,5	132	983	-	328	-	958	958	-	160	-	225	300	45	78,6
EV 6/21	5,5	132	1009	-	328	-	984	984	-	160	-	225	300	45,5	79,1
EV 6/23	5,5	132	1061	-	328	-	1036	1036	-	160	-	225	300	46,5	80,1

Performance curves 60Hz



The hydraulic characteristics are guaranteed, according to ISO standard 9906:2012, grade 3B.

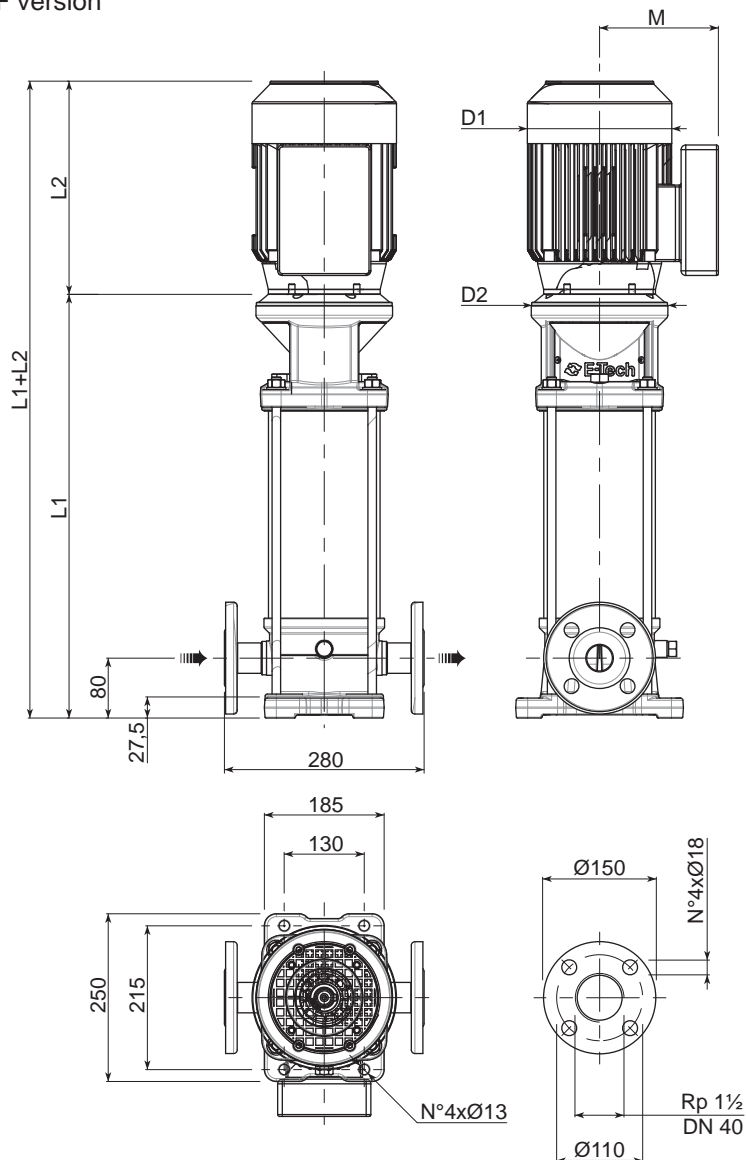
Performance curves 60Hz



00114158 10/2015

The hydraulic characteristics are guaranteed, according to ISO standard 9906:2012, grade 3B.

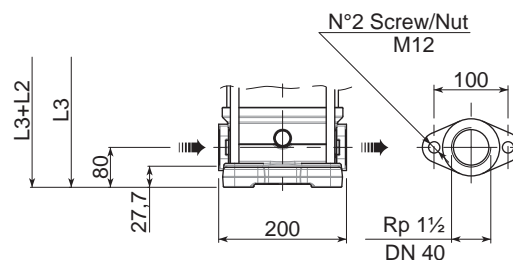
F version



F version Round flanges on body type PN25: the pump is supplied without counterflanges (Optional accessories, including bolts and joints).

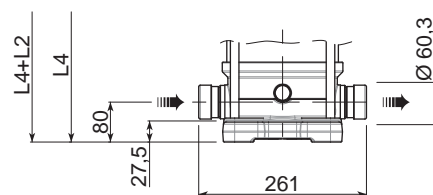
T version

Available from EV10/2 to EV10/10



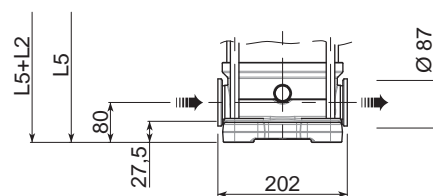
T version Oval flanges on body type PN16: the pump is supplied without threaded oval counter flanges (Optional accessories, including bolts and joints).

V version



V version Connections with rapid fittings type "Victaulic": the pump is supplied without the collars (Optional accessories).

C version

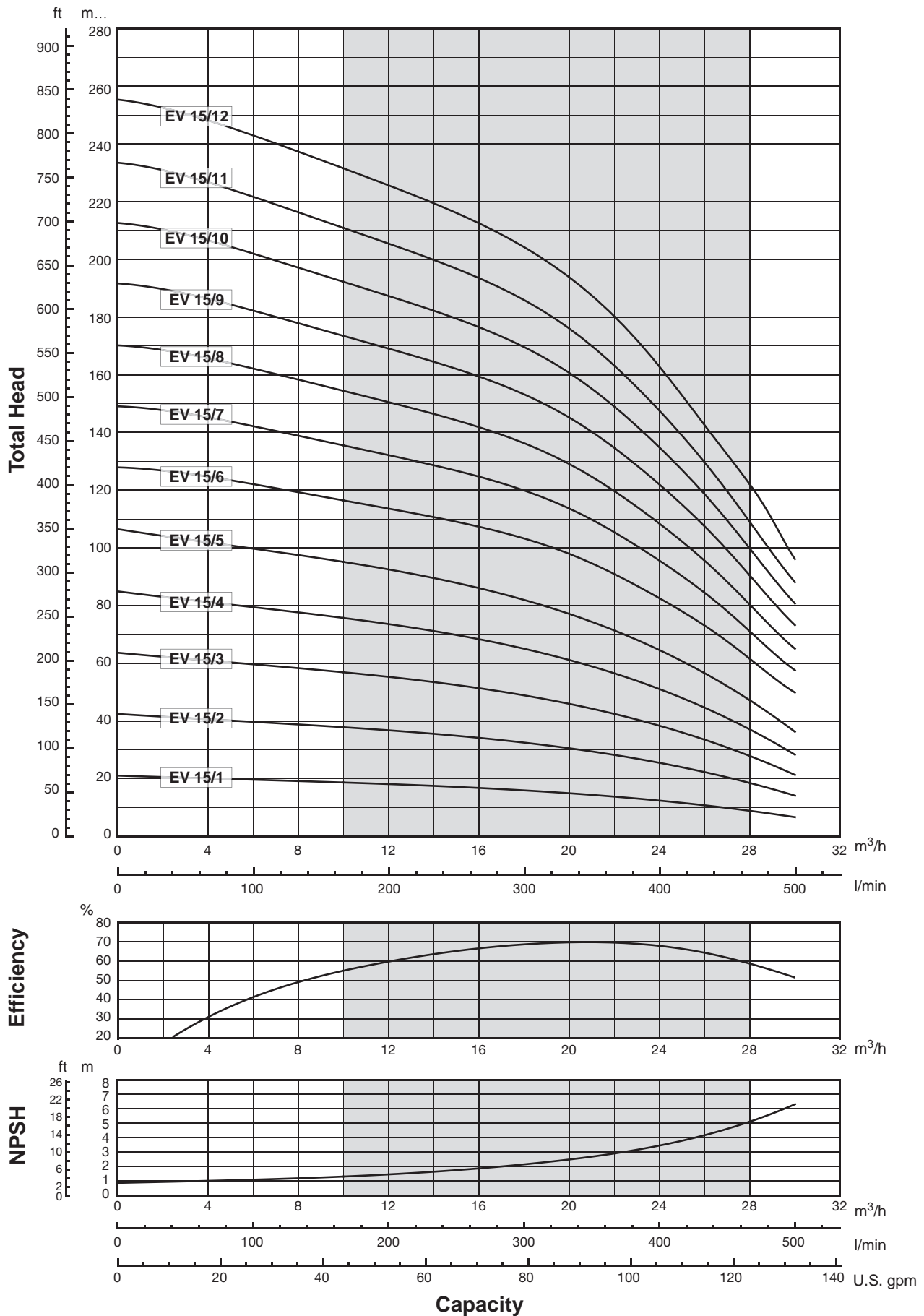


C version Connections with round fittings type Clamp-FlexiClamp: the pump is supplied without collars (Optional accessories).

0011401411 02/2015

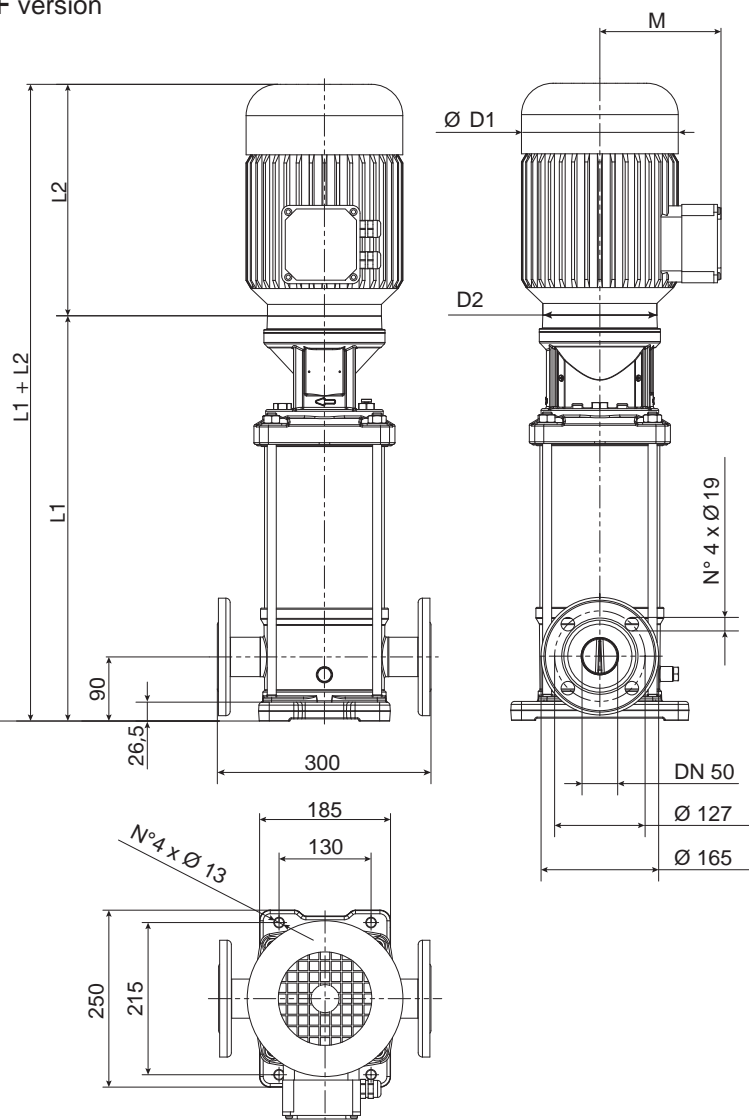
Pump Model	Motor		Dimensions (mm)						M		D1		D2	Weight (kg)	
	kW	Dim	L1 F	1-PHASE	3-PHASE	L3 T	L4 V	L5 C	1-PHASE	3-PHASE	1-PHASE	3-PHASE		Pump	Electric Pump
EV 10/2	1,1	80	347,5	232	232	347,5	347,5	347,5	150	129	160	160	170	17,5	28,6
EV 10/3	2,2	90	387,5	267	267	387,5	387,5	387,5	160	138	180	180	170	18,5	34,5
EV 10/4	2,2	90	417,5	267	267	417,5	417,5	417,5	160	138	180	180	170	19,5	35,5
EV 10/5	3	100	457,5	-	306	457,5	457,5	457,5	-	145	-	196	170	20,5	43,3
EV 10/6	4	112	487,5	-	306	487,5	487,5	487,5	-	145	-	196	170	21	47,5
EV 10/7	4	112	517,5	-	306	517,5	517,5	517,5	-	145	-	196	170	22	48,5
EV 10/8	5,5	132	723	-	328	723	723	723	-	160	-	225	300	42	75,6
EV 10/9	5,5	132	753	-	328	753	753	753	-	160	-	225	300	42,5	76,1
EV 10/10	7,5	132	783	-	328	783	783	783	-	160	-	225	300	43,5	77,1
EV 10/11	7,5	132	813	-	350	-	813	813	-	160	-	225	300	44	80
EV 10/12	7,5	132	843	-	350	-	843	843	-	160	-	225	300	44,5	80,5
EV 10/13	7,5	132	873	-	350	-	873	873	-	160	-	225	300	45,5	81,5
EV 10/15	11	160	953	-	425	-	953	953	-	194	-	248	350	49	111
EV 10/17	11	160	1013	-	425	-	1013	1013	-	194	-	248	350	50,5	112,5

Performance curves 60Hz



The hydraulic characteristics are guaranteed, according to ISO standard 9906:2012, grade 3B.

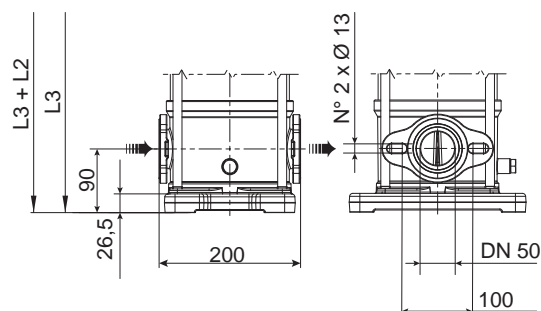
F version



F version Round flanges on body type PN25: the pump is supplied without counterflanges (Optional accessories, including bolts and joints).

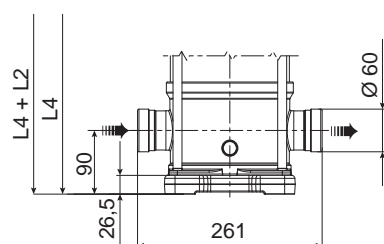
T version

Available from EV15/1 to EV15/7



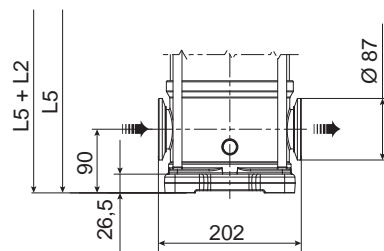
T version Oval flanges on body type PN16: the pump is supplied without threaded oval counter flanges (Optional accessories, including bolts and joints).

V version



V version Connections with rapid fittings type "Victaulic": the pump is supplied without the collars (Optional accessories).

C version

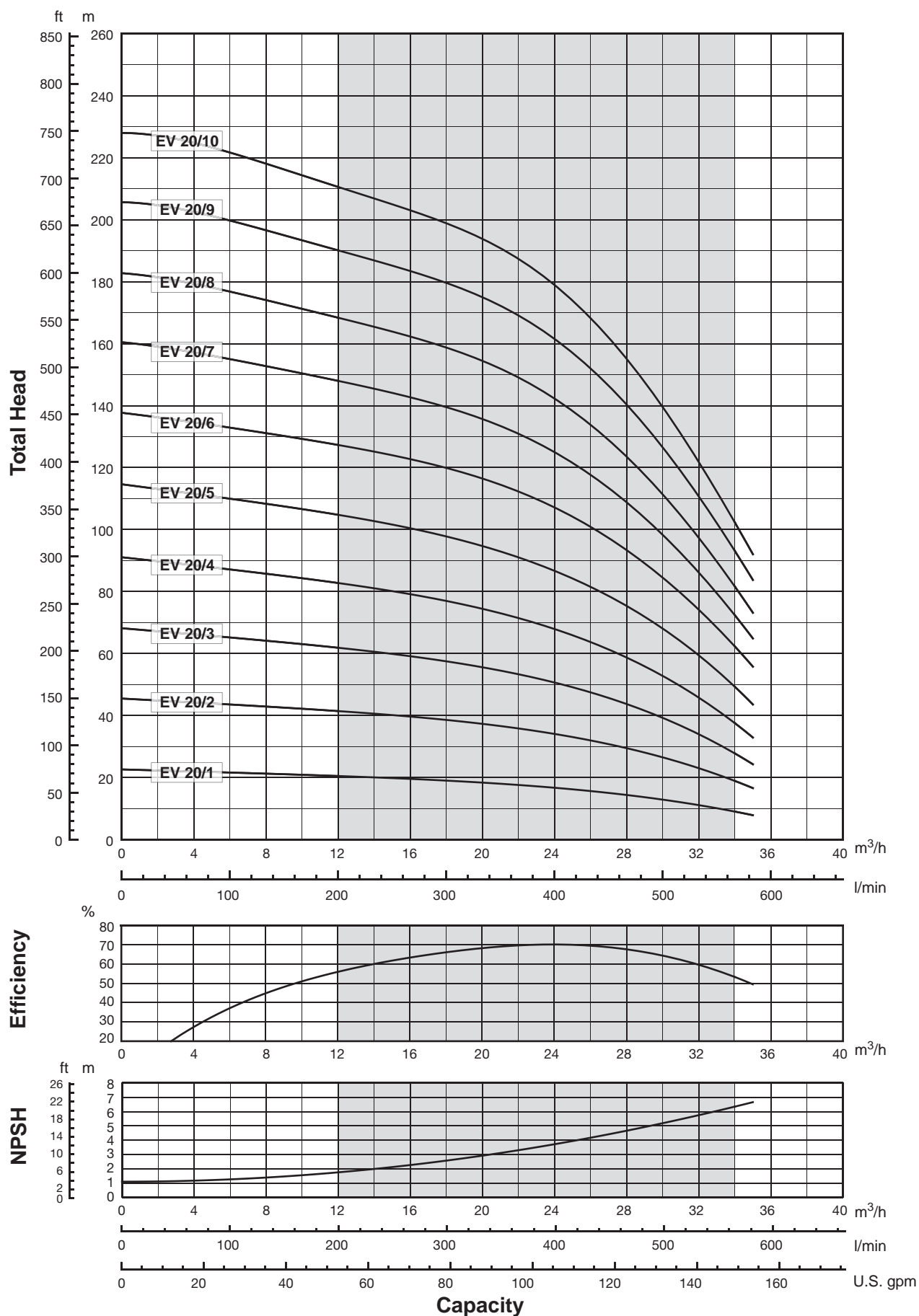


C version Connections with round fittings type Clamp-FlexiClamp: the pump is supplied without collars (Optional accessories).

00114095 05/2014

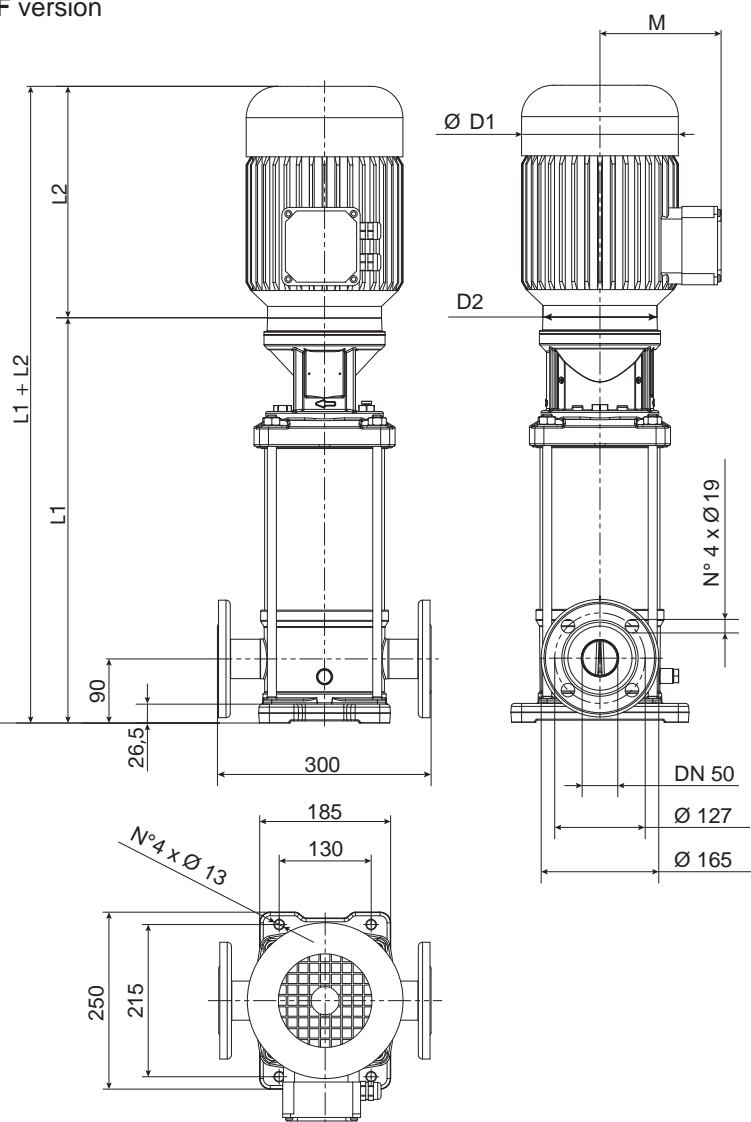
Pump Model	Motor		Dimensions (mm)											Weight	
	kW	Size	L1	L2		L3	L4	L5	M		D1		D2	Pump	Electric Pump
			F	1-PHASE	3-PHASE	T	V	C	1-PHASE	3-PHASE	1-PHASE	3-PHASE			
EV 15/1	1,5	90	415	232	267	415	415	415	150	138	160	180	170	24	38,0
EV 15/2	3	100	425	267	290	425	425	425	160	138	180	180	170	26	44
EV 15/3	4	112	473	-	306	473	473	473	-	145	-	196	170	27	49,8
EV 15/4	5,5	132	707,9	-	328	707,9	707,9	707,9	-	161	-	225	300	49	83
EV 15/5	7,5	132	755,9	-	350	755,9	755,9	755,9	-	161	-	225	300	50,5	86,5
EV 15/6	11	160	823,9	-	425	823,9	823,9	823,9	-	198	-	248	350	54,5	112,5
EV 15/7	11	160	871,9	-	425	871,9	871,9	871,9	-	198	-	248	350	56	114
EV 15/8	11	160	919,9	-	425	-	919,9	919,9	-	198	-	248	350	57,5	115,5
EV 15/9	15	160	967,9	-	476	-	967,9	967,9	-	198	-	248	350	59	123
EV 15/10	15	160	1015,9	-	476	-	1015,9	1015,9	-	198	-	248	350	60,5	124,5
EV 15/11	15	160	1063,9	-	476	-	1063,9	1063,9	-	198	-	248	350	61,5	125,5
EV 15/12	18,5	160	1111,9	-	542	-	1111,9	1111,9	-	238	-	317	350	63	161

Performance curves 60Hz



The hydraulic characteristics are guaranteed, according to ISO standard 9906:2012, grade 3B.

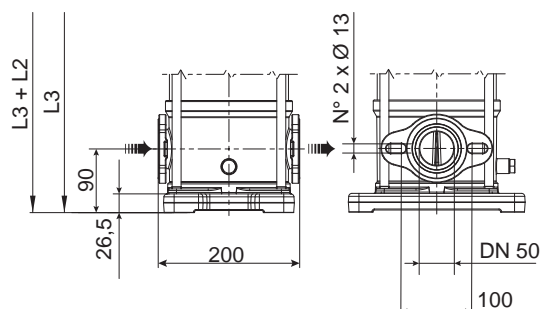
F version



F version Round flanges on body type PN25: the pump is supplied without counterflanges (Optional accessories, including bolts and joints).

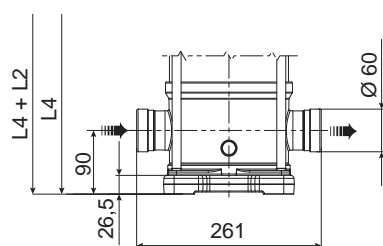
T version

Available from EV20/1 to EV20/7



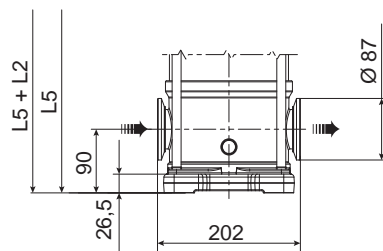
T version Oval flanges on body type PN16: the pump is supplied without threaded oval counter flanges (Optional accessories, including bolts and joints).

V version



V version Connections with rapid fittings type "Victaulic": the pump is supplied without the collars (Optional accessories).

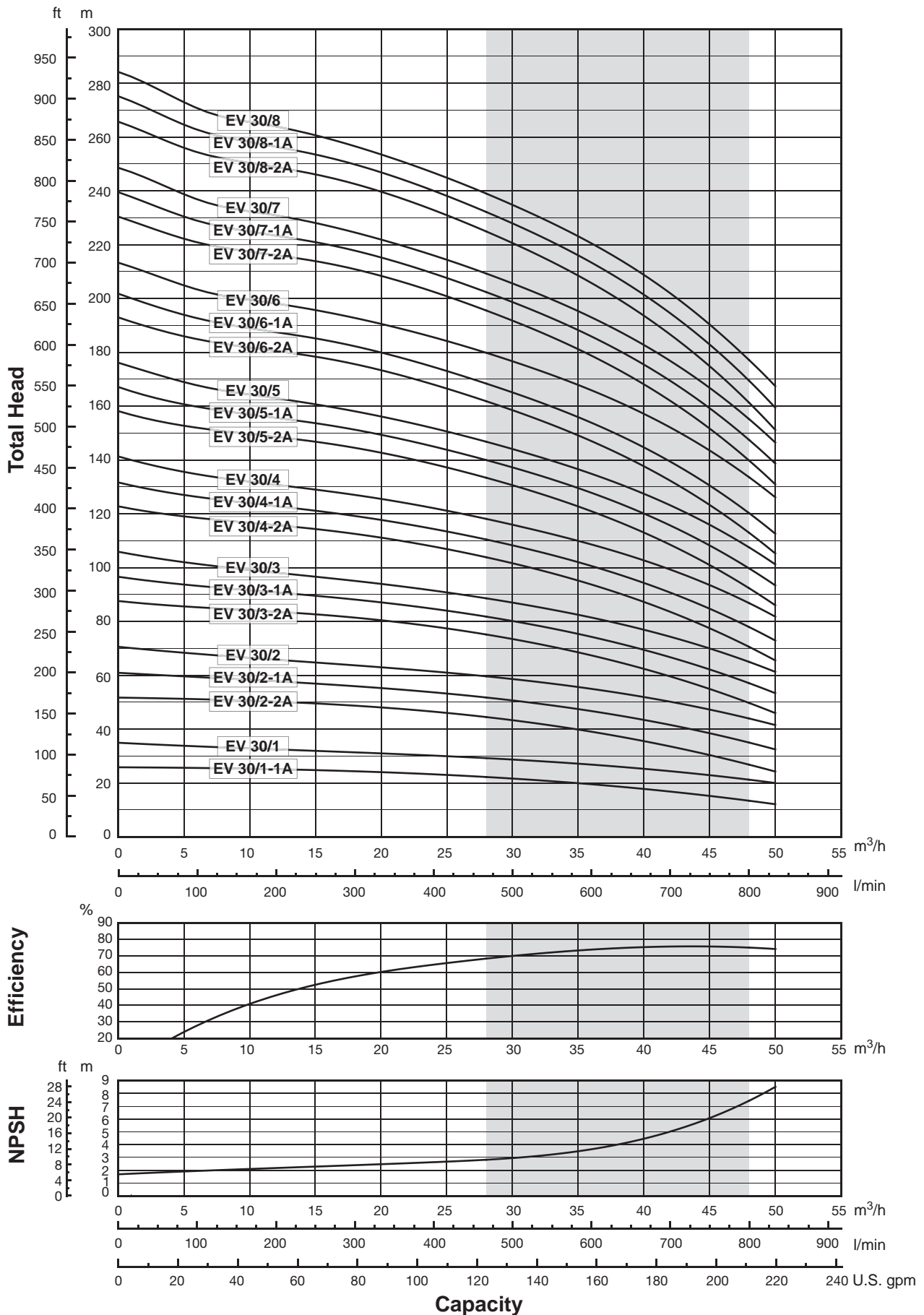
C version



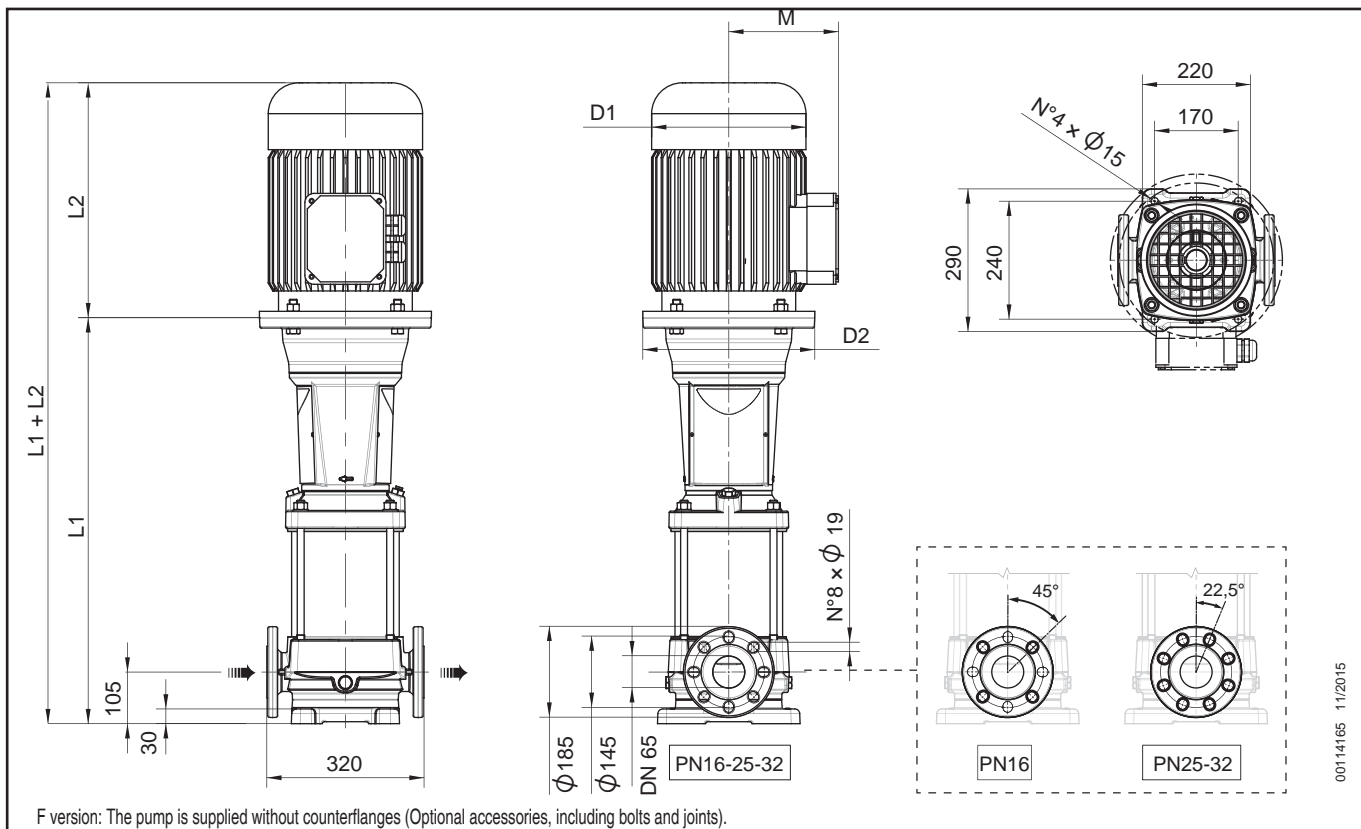
C version Connections with round fittings type Clamp-FlexiClamp: the pump is supplied without collars (Optional accessories).

00114095 05/2014

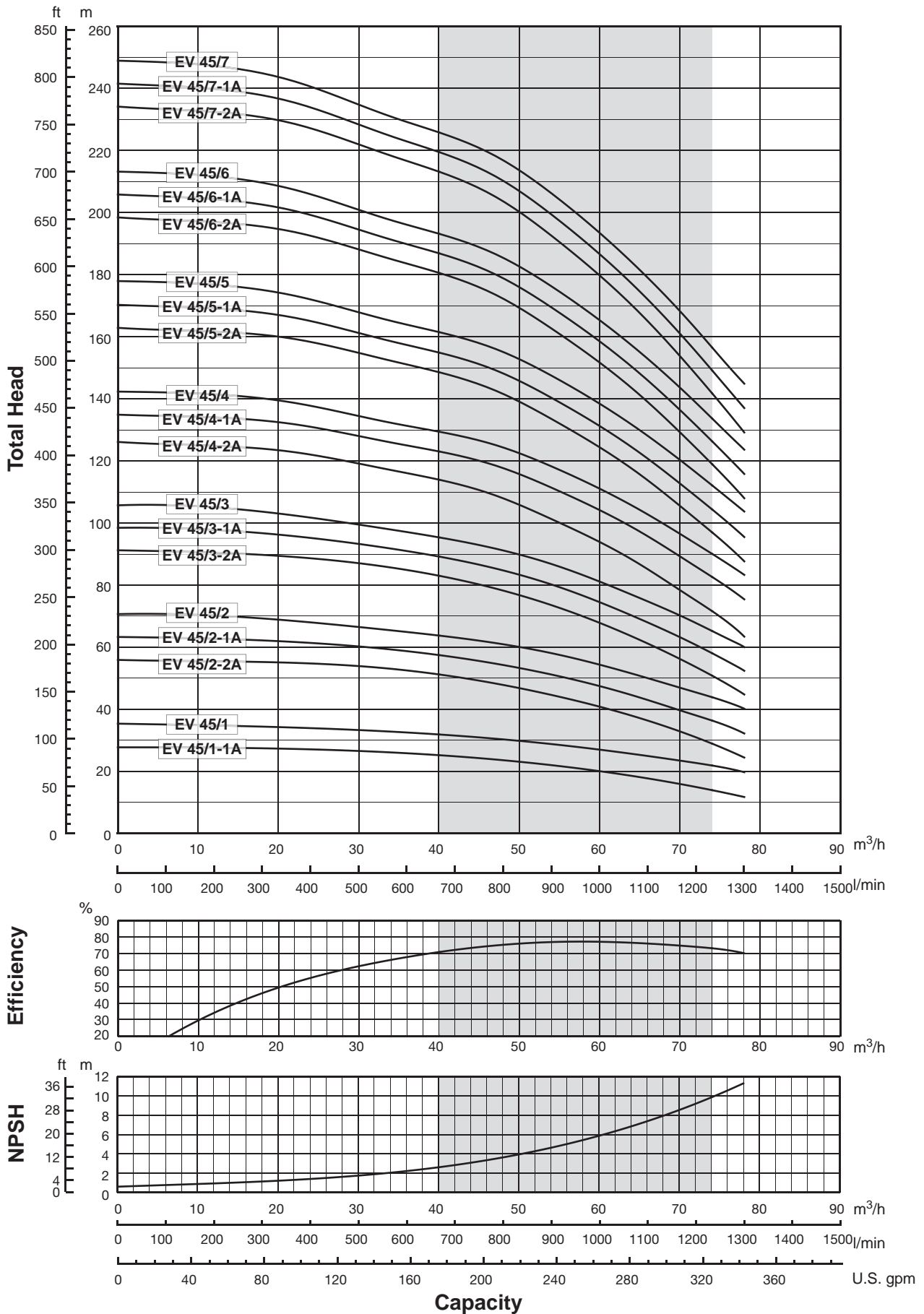
Pump Model	Motor		Dimensions (mm)											Weight	
	kW	Size	L1	L2		L3	L4	L5	M		D1		D2	Pump	Electric Pump
			F	1-PHASE	3-PHASE	T	V	C	1-PHASE	3-PHASE	1-PHASE	3-PHASE			
EV 20/1	2,2	90	415	232	267	415	415	415	150	138	160	180	170	24	40,0
EV 20/2	4	112	425	267	306	425	425	425	160	145	180	196	170	26	48,8
EV 20/3	5,5	132	659,9	-	328	659,9	659,9	659,9	-	161	-	225	300	47,5	81,5
EV 20/4	7,5	132	707,9	-	350	707,9	707,9	707,9	-	161	-	225	300	49	85
EV 20/5	11	160	775,9	-	425	775,9	775,9	775,9	-	198	-	248	350	53	111
EV 20/6	11	160	823,9	-	425	823,9	823,9	823,9	-	198	-	248	350	54,5	112,5
EV 20/7	15	160	871,9	-	476	871,9	871,9	871,9	-	198	-	248	350	56	120
EV 20/8	15	160	919,9	-	476	-	919,9	919,9	-	198	-	248	350	57,5	121,5
EV 20/9	18,5	160	967,9	-	542	-	967,9	967,9	-	238	-	317	350	59	157
EV 20/10	18,5	160	1015,9	-	542	-	1015,9	1015,9	-	238	-	317	350	60,5	158,5



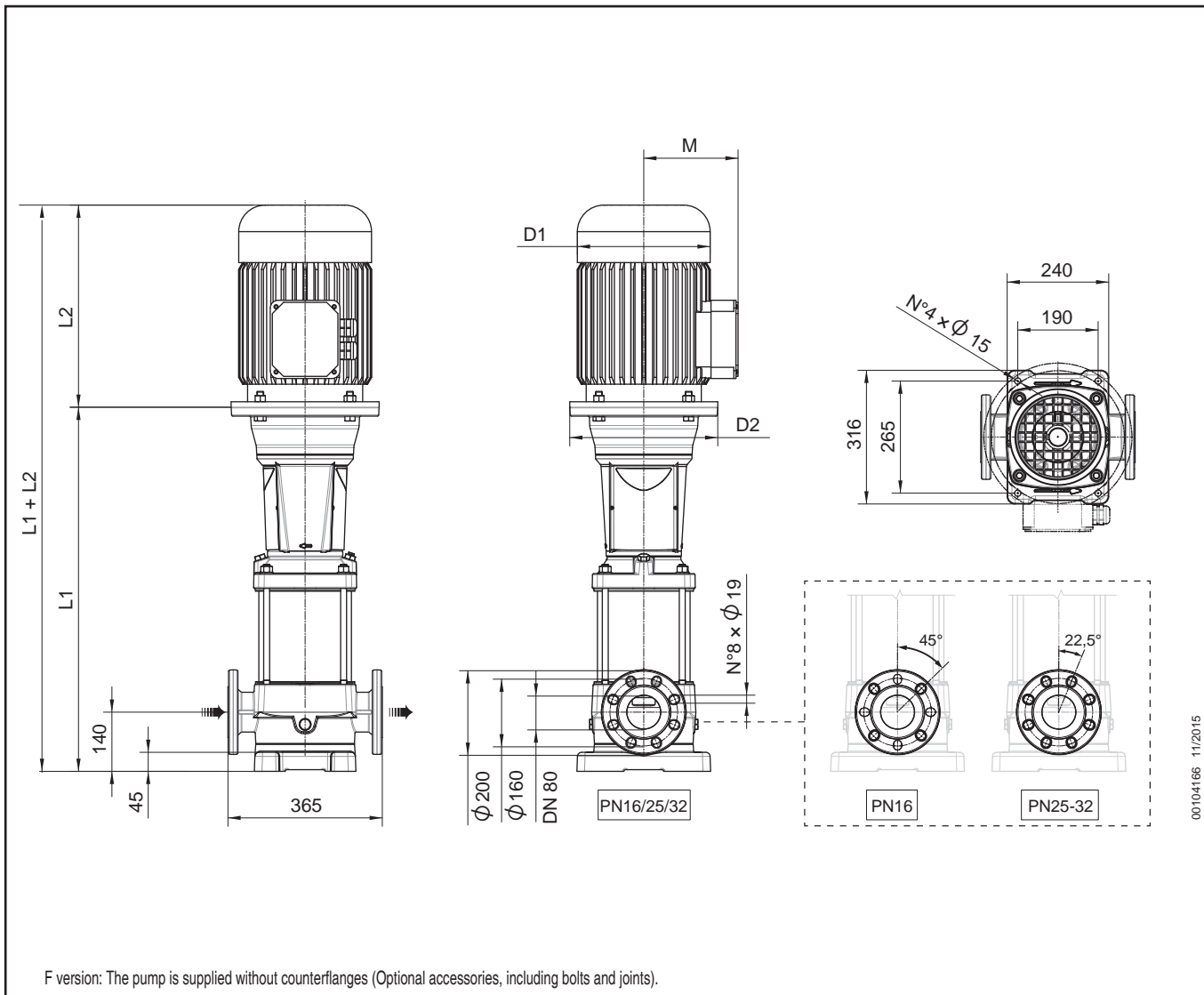
The hydraulic characteristics are guaranteed, according to ISO standard 9906:2012, grade 3B.



Pump Model	Motor		Dimensions (mm)						Weight		
	kW	Size	L1	L2	M	D1	D2	L1 + L2	PUMP	MOTOR	ELECTRIC
EV 30/1-1A	3	100	455	290	138	180	170	745	53	18	71
EV 30/1	4	112	455	306	145	196	170	761	53	22,8	75,8
EV 30/2-2A	5,5	132	724	328	161	225	300	1052	74,5	34	108,5
EV 30/2-1A	7,5	132	724	350	161	225	300	1074	74,5	36	110,5
EV 30/2	11	160	744	425	198	248	350	1169	77,5	58	135,5
EV 30/3-2A	11	160	826	425	198	248	350	1251	81,5	58	139,5
EV 30/3-1A	11	160	826	425	198	248	350	1251	81,5	58	139,5
EV 30/3	15	160	826	476	198	248	350	1302	81,5	64	145,5
EV 30/4-2A	15	160	908	476	198	248	350	1384	85,5	64	149,5
EV 30/4-1A	15	160	908	476	198	248	350	1384	85,5	64	149,5
EV 30/4	18,5	160	908	542	238	317	350	1450	85,5	98	183,5
EV 30/5-2A	18,5	160	990	542	238	317	350	1532	89,5	98	187,5
EV 30/5-1A	18,5	160	990	542	238	317	350	1532	89,5	98	187,5
EV 30/5	22	180	990	542	238	317	350	1532	89,5	109	198,5
EV 30/6-2A	22	180	1072	542	238	317	350	1614	93,5	109	202,5
EV 30/6-1A	22	180	1072	542	238	317	350	1614	93,5	109	202,5
EV 30/6	30	200	1077	658	300	399	400	1735	96,5	228	324,5
EV 30/7-2A	30	200	1159	658	300	399	400	1817	100,5	228	328,5
EV 30/7-1A	30	200	1159	658	300	399	400	1817	100,5	228	328,5
EV 30/7	30	200	1159	658	300	399	400	1817	100,5	228	328,5
EV 30/8-2A	30	200	1241	658	300	399	400	1899	104,5	228	332,5
EV 30/8-1A	37	200	1241	658	300	399	400	1899	104,5	242	346,5
EV 30/8	37	200	1241	658	300	399	400	1899	104,5	242	346,5

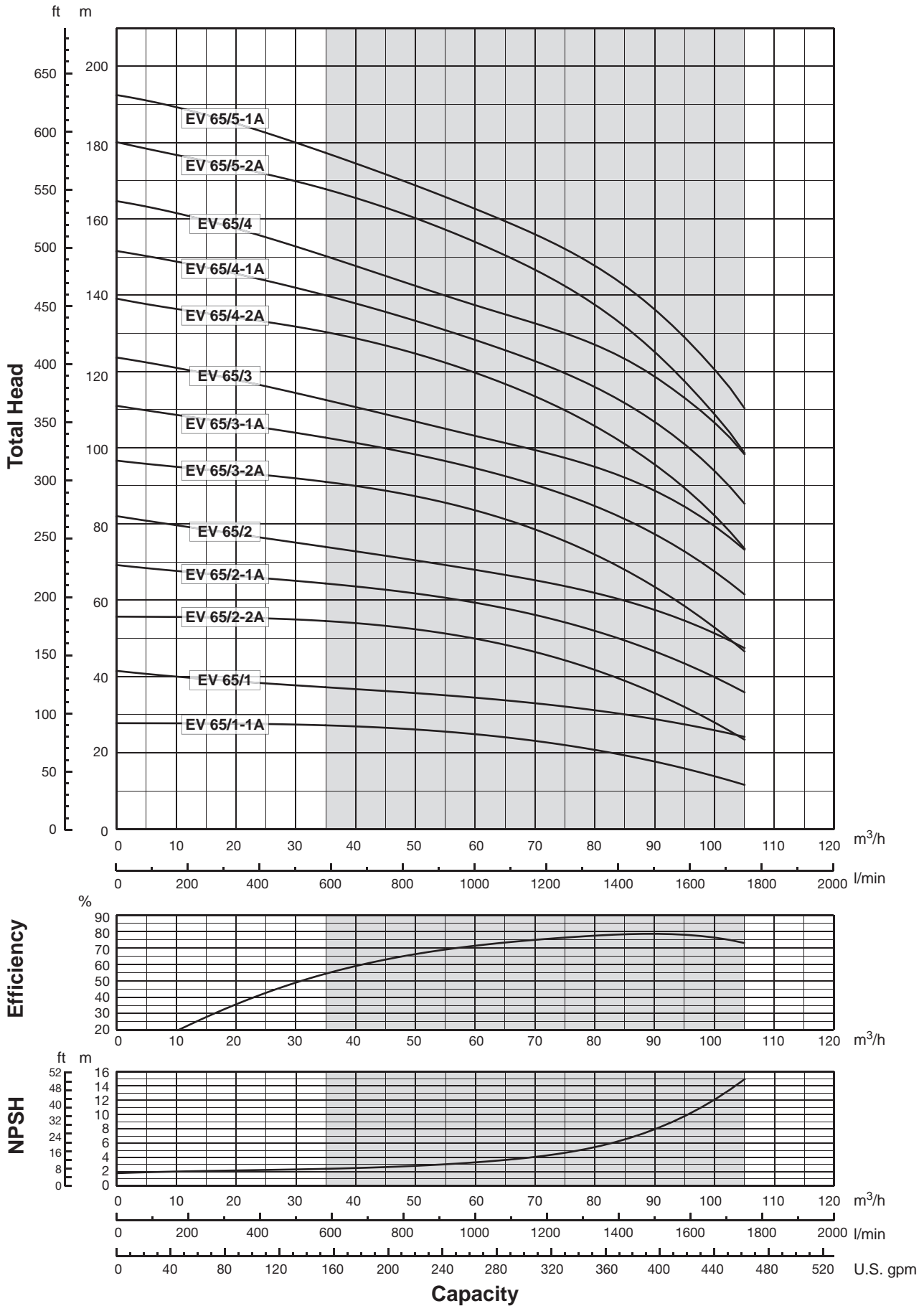


The hydraulic characteristics are guaranteed, according to ISO standard 9906:2012, grade 3B.

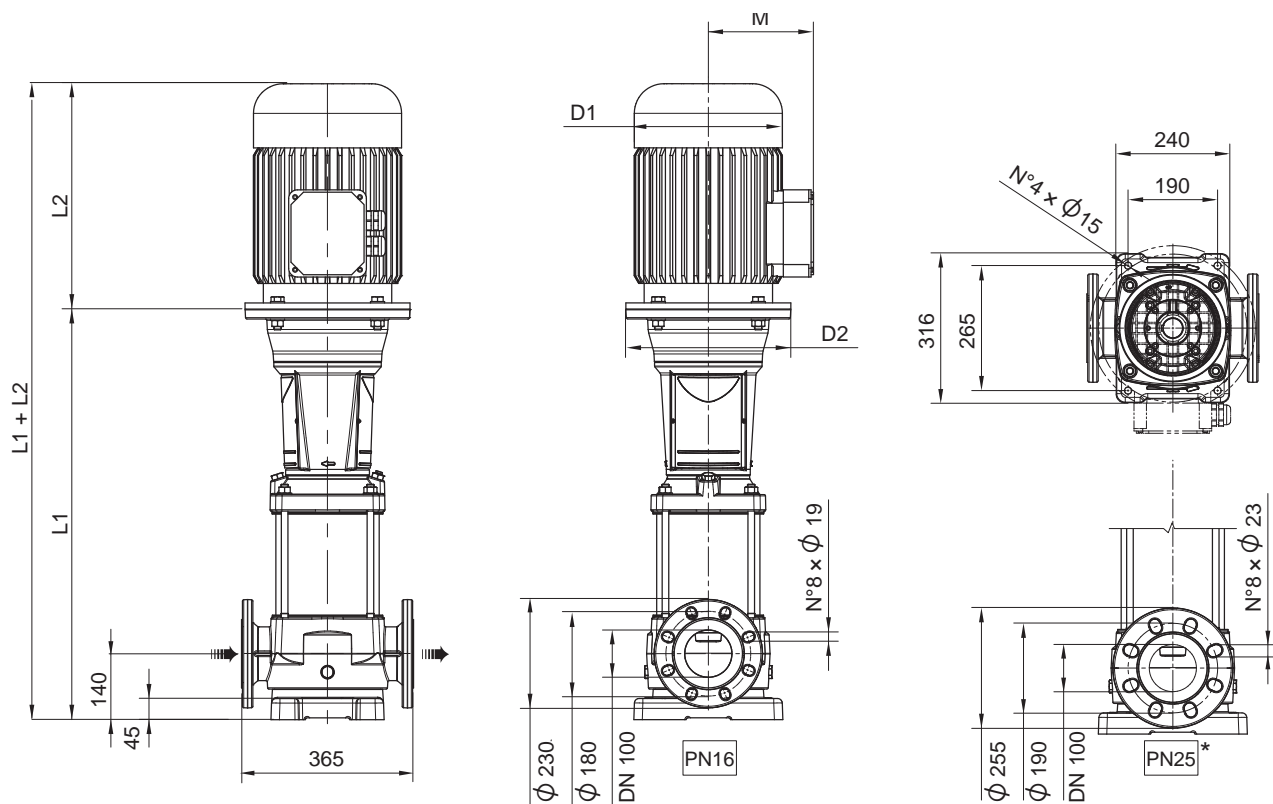


00104166 11/2015

Pump Model	Motor		Dimensions (mm)						Weight (kg)		
	kW	Size	L1	L2	M	D1	D2	L1 + L2	PUMP	MOTOR	ELECTRIC
EV 45/1-1A	5,5	132	677	328	161	225	300	1005	76,5	34	110,5
EV 45/1	7,5	132	677	350	161	225	300	1027	76,5	36	112,5
EV 45/2-2A	11	160	779	425	198	248	350	1204	83,5	58	141,5
EV 45/2-1A	11	160	779	425	198	248	350	1204	83,5	58	141,5
EV 45/2	15	160	779	476	198	248	350	1255	83,5	64	147,5
EV 45/3-2A	18,5	160	861	542	238	317	350	1403	87,5	98	185,5
EV 45/3-1A	18,5	160	861	542	238	317	350	1403	87,5	98	185,5
EV 45/3	18,5	160	861	542	238	317	350	1403	87,5	98	185,5
EV 45/4-2A	22	180	943	542	238	317	350	1485	91	109	200
EV 45/4-1A	30	200	948	658	300	399	400	1606	94	228	322
EV 45/4	30	200	948	658	300	399	400	1606	94	228	322
EV 45/5-2A	30	200	1030	658	300	399	400	1688	98	228	326
EV 45/5-1A	30	200	1030	658	300	399	400	1688	98	228	326
EV 45/5	37	200	1030	658	300	399	400	1688	98	242	340
EV 45/6-2A	37	200	1112	658	300	399	400	1770	102	242	344
EV 45/6-1A	37	200	1112	658	300	399	400	1770	102	242	344
EV 45/6	37	200	1112	658	300	399	400	1770	102	242	344
EV 45/7-2A	45	225	1194	699	335	465	450	1893	109	308	417
EV 45/7-1A	45	225	1194	699	335	465	450	1893	109	308	417
EV 45/7	45	225	1194	699	335	465	450	1893	109	308	417



The hydraulic characteristics are guaranteed, according to ISO standard 9906:2012, grade 3B.

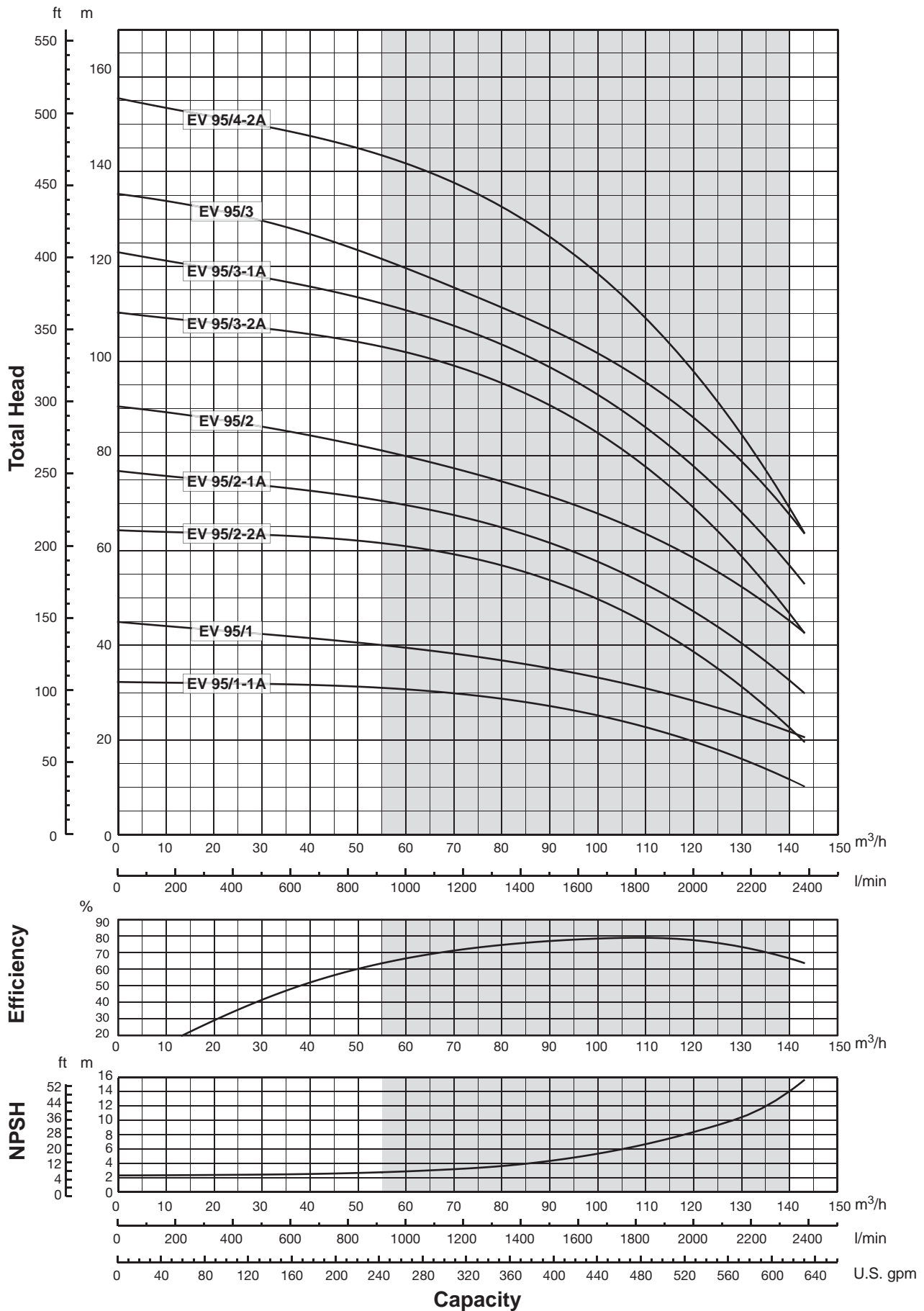


00114164 11/2015

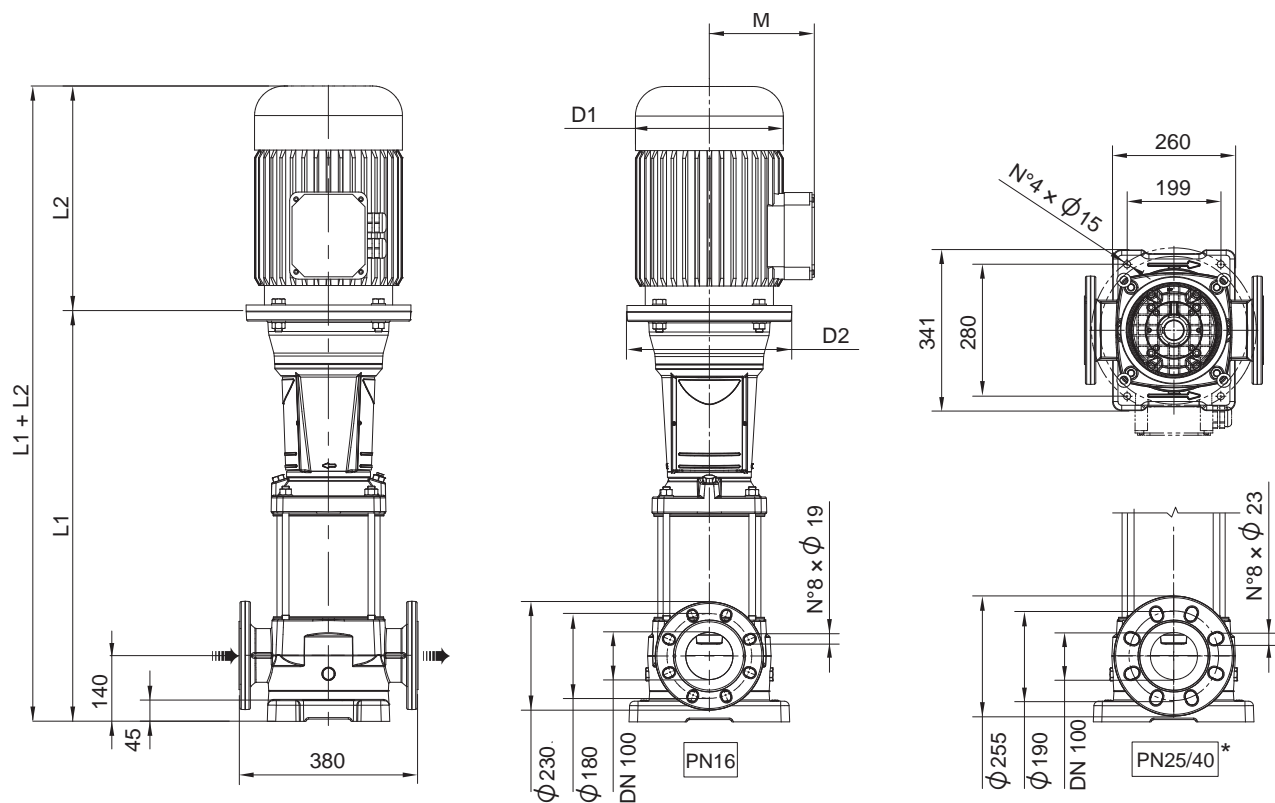
F version: The pump is supplied without counterflanges (Optional accessories, including bolts and joints).

* On request available from EV65/1-1A to EV65/4-1A

Pump Model	Motor			Dimensions (mm)						Weight (kg)		
	PN	kW	Size	L1	L2	M	D1	D2	L1 + L2	PUMP	MOTOR	ELECTRIC
EV 65/1-1A	16	7,5	132	737,1	350	161	225	300	1087,1	81	36	117
EV 65/1	16	11	160	757,1	425	198	248	350	1182,1	84	58	142
EV 65/2-2A	16	15	160	849,2	476	198	248	350	1325,2	88,5	64	152,5
EV 65/2-1A	16	18,5	160	849,2	542	238	317	350	1391,2	88,5	98	186,5
EV 65/2	16	22	180	849,2	542	238	317	350	1391,2	89	109	198
EV 65/3-2A	16	22	180	941,3	542	238	317	350	1483,3	93,5	109	202,5
EV 65/3-1A	16	30	200	946,3	658	300	399	400	1604,3	96,5	228	324,5
EV 65/3	16	30	200	946,3	658	300	399	400	1604,3	96,5	228	324,5
EV 65/4-2A	16	37	200	1038,4	658	300	399	400	1696,4	101	242	343
EV 65/4-1A	16	37	200	1038,4	658	300	399	400	1696,4	101	242	343
EV 65/4	16	45	225	1038,4	699	335	465	450	1737,4	104	308	412
EV 65/5-2A	25	45	225	1130,5	699	335	465	450	1829,5	108,5	308	416,5
EV 65/5-1A	25	45	225	1130,5	699	335	465	450	1829,5	108,5	308	416,5



The hydraulic characteristics are guaranteed, according to ISO standard 9906:2012, grade 3B.



00114167 11/2015

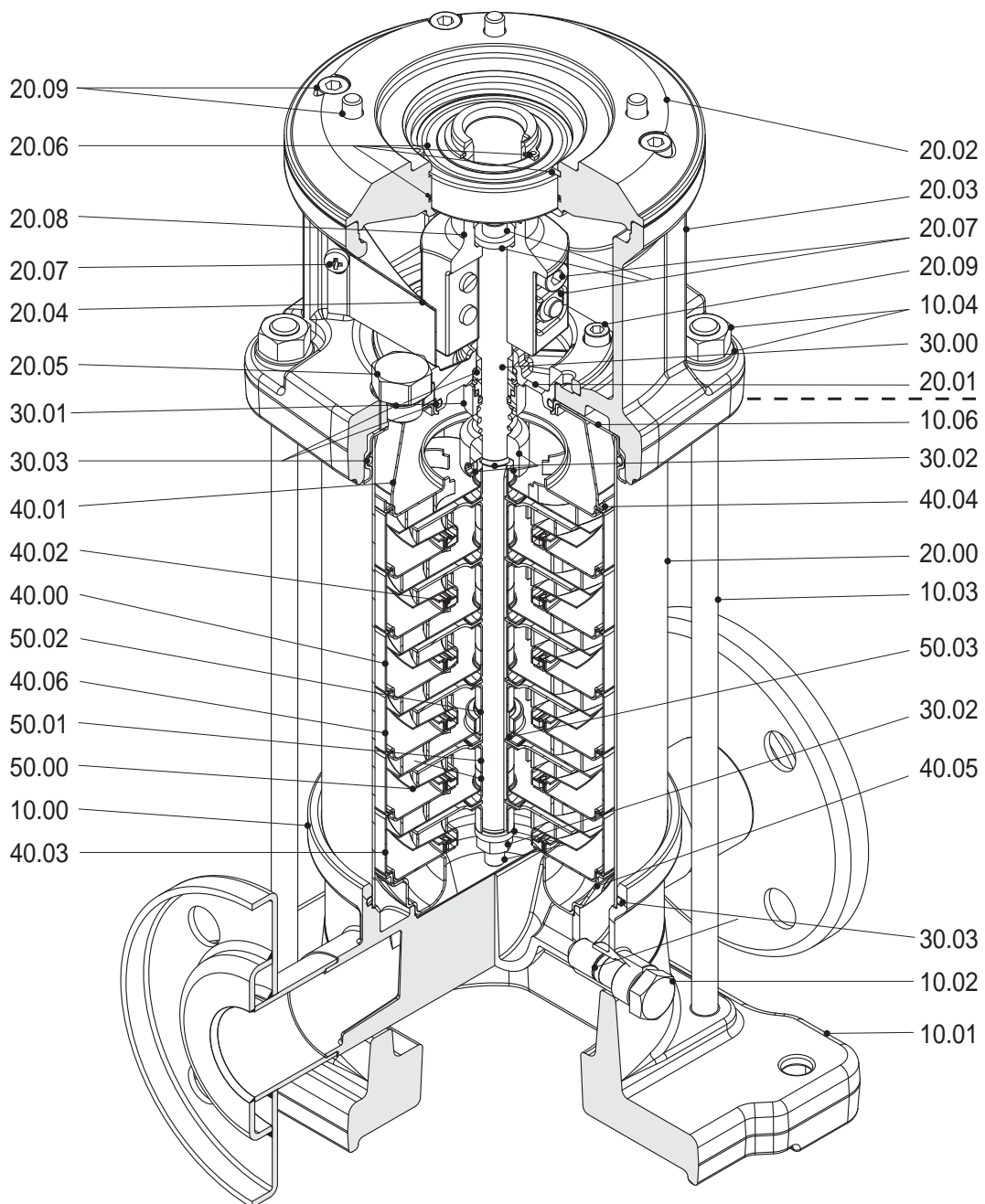
F version: The pump is supplied without counterflanges (Optional accessories, including bolts and joints).

* Available from EV95/1-1A to EV95/4-2A

Pump Model	Motor			Dimensions (mm)						Weight (kg)		
	PN	kW	Size	L1	L2	M	D1	D2	L1 + L2	PUMP	MOTOR	ELECTRIC
EV 95/1-1A	16	11	132	737,1	425	198	248	300	1162,1	82,5	58	140,5
EV 95/1	16	15	160	757,1	476	198	248	350	1233,1	85,5	64	149,5
EV 95/2-2A	16	18,5	160	849,2	542	238	317	350	1391,2	89	98	187
EV 95/2-1A	16	22	180	849,2	542	238	317	350	1391,2	89,5	109	198,5
EV 95/2	16	30	200	854,2	658	300	399	400	1512,2	92,5	228	320,5
EV 95/3-2A	16	37	200	946,3	658	300	399	400	1604,3	96,5	242	338,5
EV 95/3-1A	16	37	200	946,3	658	300	399	400	1604,3	96,5	242	338,5
EV 95/3	16	45	225	946,3	699	335	465	450	1645,3	99,5	308	407,5
EV 95/4-2A	16	45	225	1038,4	699	335	465	450	1737,4	103	308	411

EV Series Pump Section and List of Main Components

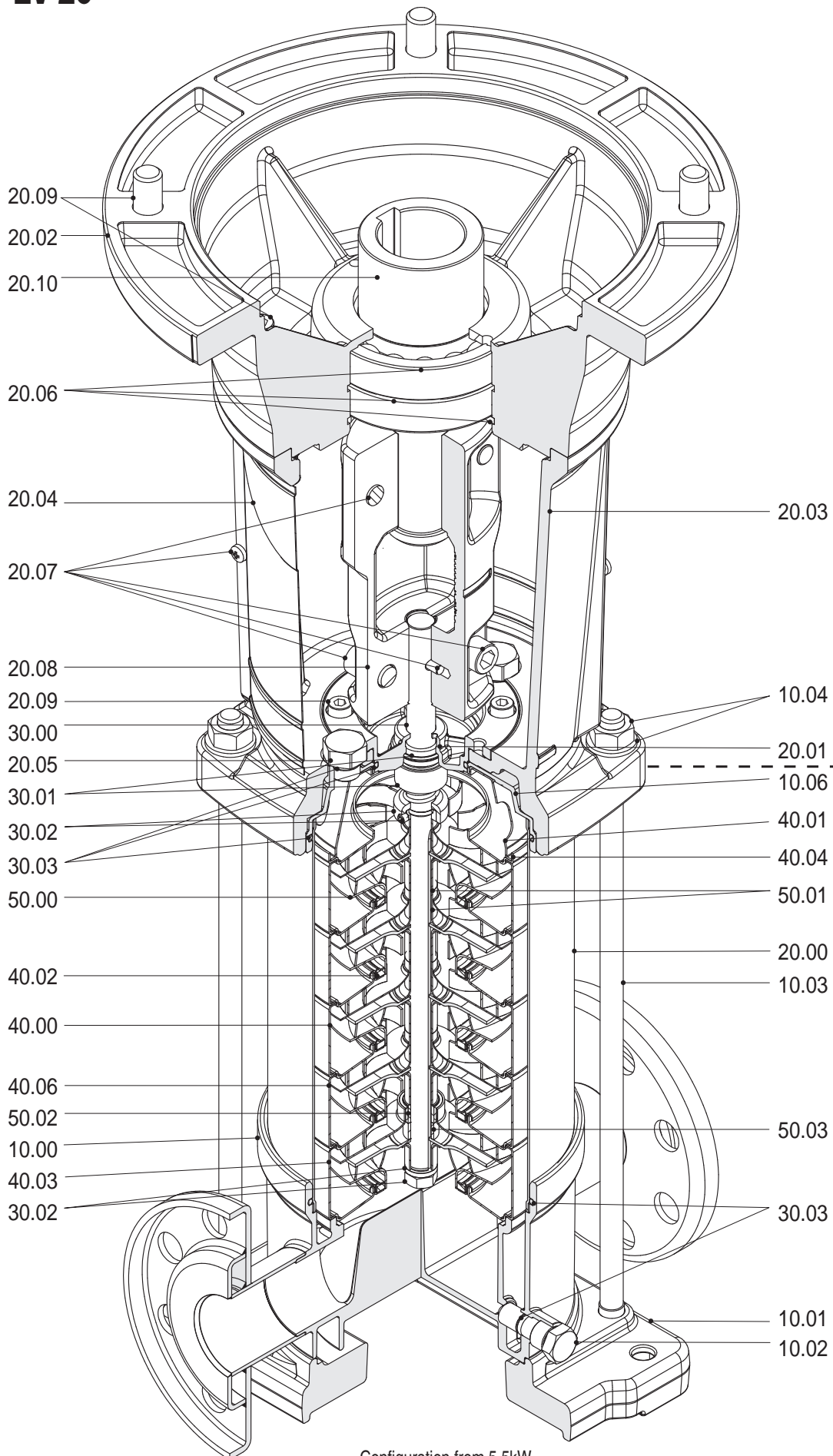
EV 1 - EV 3 - EV 6 - EV 10



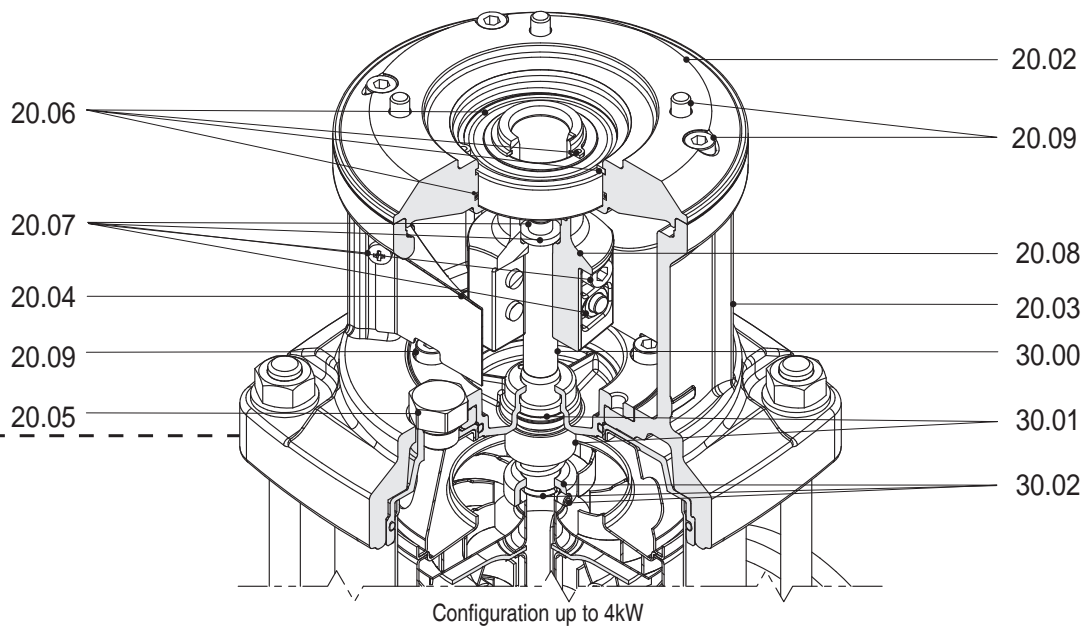
(Configuration up to 4kW)

EV Series Pump Section and List of Main Components

EV 15 - EV 20



Configuration from 5,5kW



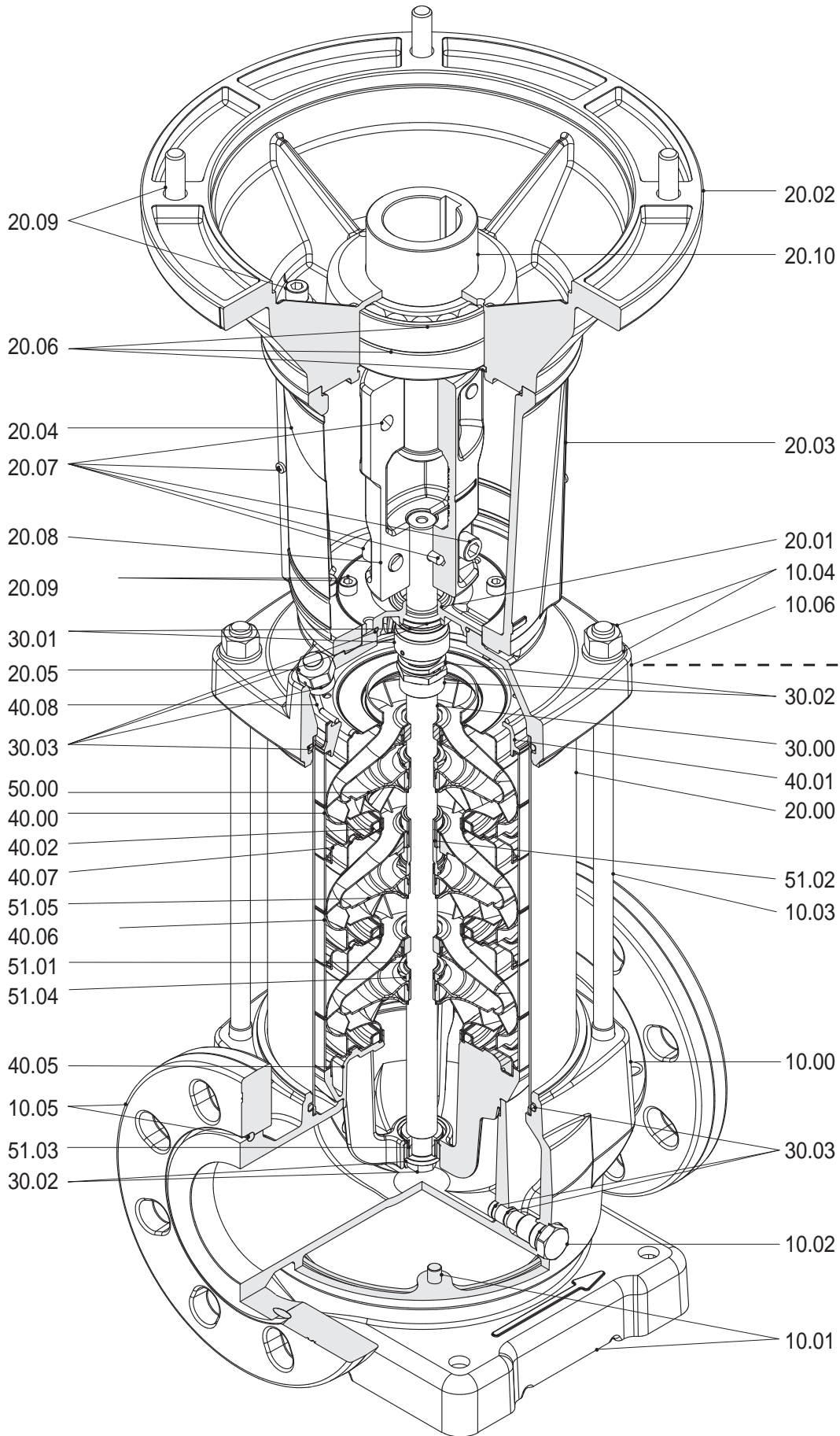
00114114 01/2015

N. rif.	Description
10.00	Pump casing
10.01	Pump fixing plate
10.02	Filling and draining plug
10.03	Tie bolt
10.04	Kit nuts and washers
10.06	Upper Flange
20.00	Outer Case
20.01	Mechanical seal housing
20.02	Motor flange
20.03	Motor bracket
20.04	Coupling guard
20.05	Filling plugs
20.06	Circlips and bearings, and O-ring
20.07	Coupling fasteners
20.08	Coupling
20.09	Kit motor screws

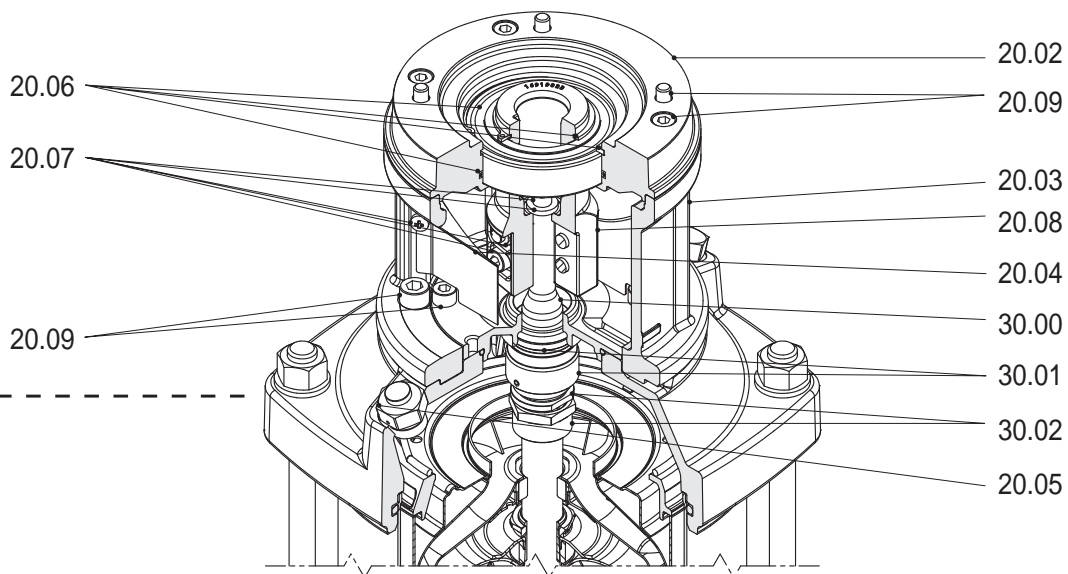
N. rif.	Description
20.10	Motor shaft adapter
30.00	Pump shaft
30.01	Kit Mechanical seal
30.02	Mechanical seal fastening kit
30.03	Kit O-rings
40.00	Stage housing and diffuser
40.01	Stage Centering outlet
40.02	Floating neck ring
40.03	Initial stage housing
40.04	Last Stage with diffuser
40.06	Stage housing and diffuser with bearing
50.00	Impeller
50.01	Impeller spacer
50.02	Intermediary sleeve
50.03	Intermediary sleeve spacer

EV Series Pump Section and List of Main Components

EV 30 - EV 45 - EV 65 - EV 95



Configuration from 5,5kW



Configuration up to 4kW

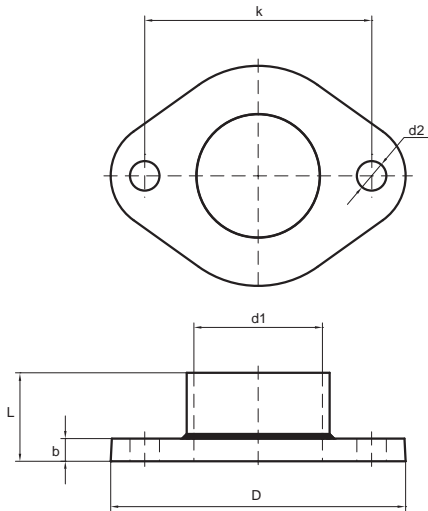
00114113 01/2015

N. rif.	Description
10.00	Pump casing
10.01	Pump fixing plate
10.02	Draining plug
10.03	Tie bolt
10.04	Kit nuts and washers
10.05	Kit flanges ring
10.06	Upper Flange
20.00	Outer Case
20.01	Mechanical seal housing
20.02	Motor flange
20.03	Motor bracket
20.04	Coupling guard
20.05	Filling plugs
20.06	Circlips and bearings, and O-ring
20.07	Coupling fasteners
20.08	Coupling
20.09	Kit motor screws
20.10	Motor shaft adapter

N. rif.	Description
30.00	Pump shaft
30.01	Kit Mechanical seal
30.02	Mechanical seal fastening kit
30.03	Kit O-rings
40.00	Stage housing and diffuser
40.01	Stage Centering outlet (only on EV 65/95)
40.02	Floating neck ring
40.05	Stage Centering inlet
40.06	Stage housing and diffuser with bearing
40.07	Flange clamping neck ring
40.08	Spring ring
50.00	Impeller
51.01	Split cone
51.02	Intermediary sleeve nut
51.03	Journal sleeve
51.04	Split cone nut
51.05	Intermediate impeller with screw

EV Series Dimensions of counterflanges

Dimensions of oval counterflanges

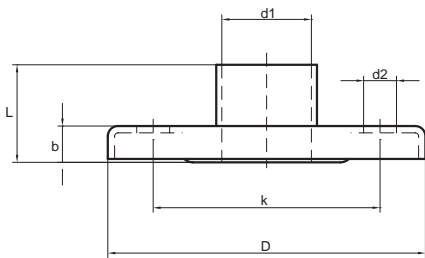


00114101 11/2013

OVAL COUNTERFLANGES								
DN	DIMENSIONS [mm]					HOLES		PN
	D	d1	k	L	b	d2	N°	
32	99	Rp 1" ¼	75	33	8	11		
		NPT 1" ¼						
40	130	Rp 1" ½	100	35	10	13	2	16
		NPT 1" ½						
50		Rp 2"		39				
		NPT 2"						

Kit round counterflanges available on request; AISI 304

Dimensions of round threaded counterflanges according to EN 1092-1

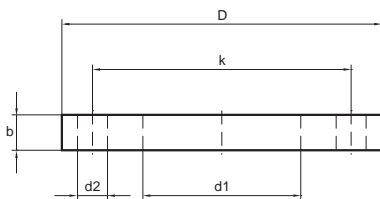


00114101 11/2013

ROUND THREADED COUNTERFLANGES								
DN	DIMENSIONS [mm]					HOLES		PN
	D	d1	k	L	b	d2	N°	
25	115	Rp 1" NPT 1"	85	43	16	14	4	25
32	140	Rp 1" ¼ NPT 1" ¼	100			18		
		40	150			Rp 1" ½ NPT 1" ½		
50	165	Rp 2" NPT 2"	127	18	19	8		
65	185	Rp 2" ½ NPT 2" ½	145	32	18			
80	200	Rp 3" NPT 3"	160	34	20	18	8	16
		100						

Kit round counterflanges available on request:
DN 25-32-40-50: galvanized steel, AISI 304, AISI 316L
DN 65-80-100: galvanized steel, AISI 316

Dimensions of welding round counterflanges according to EN 1092-1



00114101 11/2013

WELDING ROUND COUNTERFLANGES								
DN	DIMENSIONS [mm]					HOLES		PN
	D	d1	k	L	b	d2	N°	
65	185	77,5	145	-	22	18	8	25/40
80	200	90,5	160		24			
100	235	116	190		26			

Kit round counterflanges available on request; AISI 316