



I Application

The RVS pump is a high efficiency pump. Due to the helical design of the impeller, it allows to pump delicate food products without damaging them, e.g. solid particles suspended in water (proportion: 40% to 60%). It is intended for pumping pieces of fruit or whole fruits, olives, mushrooms, orange segments, vegetables, fish, etc.

The pump is manufactured in AISI 316L stainless steel by investment casting.

I Operating principle

Due to the helical shape of the impeller, the pump lets solid particles pass without destroying their structure, thus, avoiding any damage to the product during the transfer and preserving its quality.

I Design and features

Close-coupled design.

Helicoidal impeller.

Pump casing with drain port.

Pump casing with eccentric volute.

High efficiency (65 - 70%), low power consumption.

Motor: IEC B35 1500 rpm.

Mechanical seal: EN 12756 (DIN 24960 L1K).

Connections: DIN 11851 / Flanges DIN 2633 PN16 (RV150).

Bearing support integrated into the lantern (RV 150).

Max. particle size - 75mm.

I Materials

Parts in contact with the product: AISI 316L (1.4404)

Other parts: AISI 316L (1.4404)

Mechanical seal (standard): SiC/SiC/EPDM

Internal surface finish: mirror polishing

External surface finish: mirror polishing



RV 150

mushrooms

fruit



fish

olives

vegetables

I Options

Connections: SMS, Clamp, Macon, Garolla, FIL, RJT.

CE control panel with 10 m cable and plug.

St.St. trolley.

Remote control.

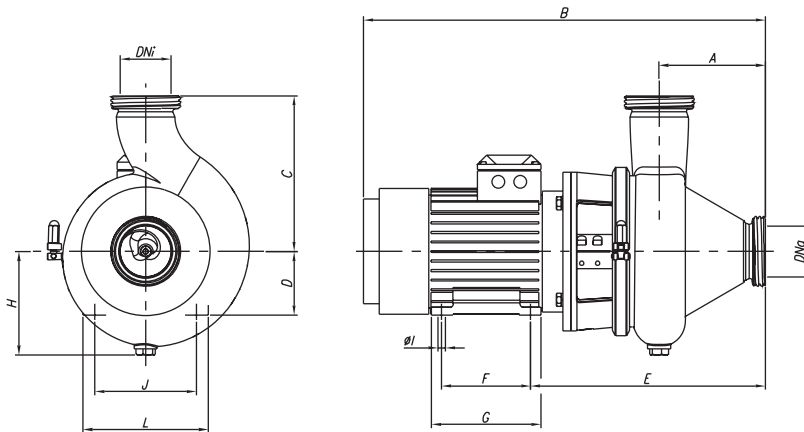
Shroud.

Motor with a frequency converter.



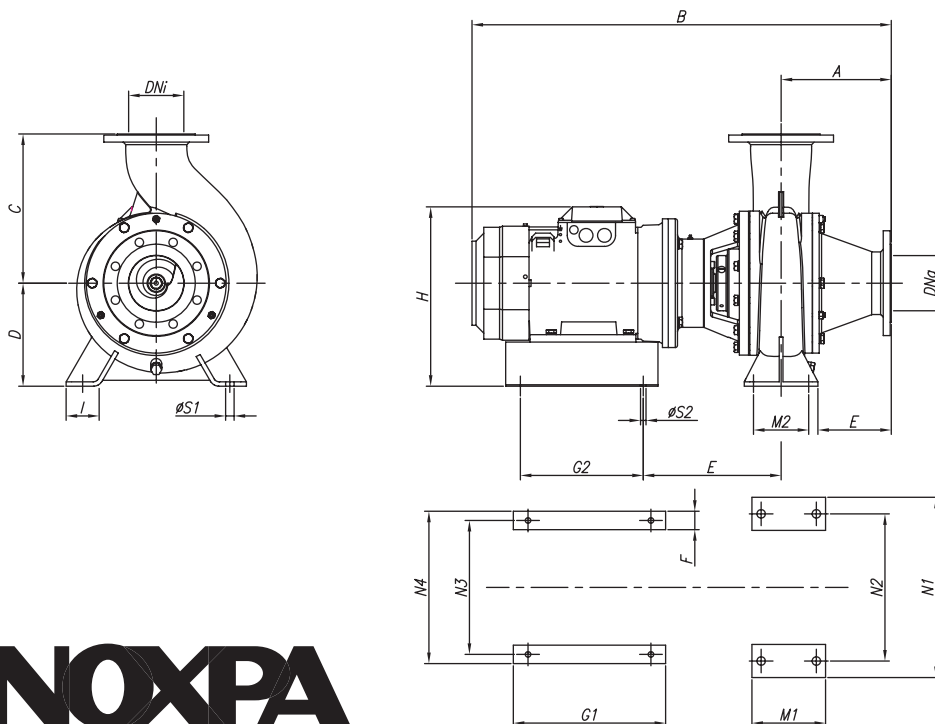
I Technical specifications

	50Hz	60Hz
Max. flow	300 m ³ /h / 1320 US GPM	350 m ³ /h / 1540 US GPM
Max. working pressure	2,5 bar / 36 PSI	3,5 bar / 51 PSI
Max. working temperature	120° C / 248° F	120° C / 248° F
Max. speed	1500 rpm	1800 rpm



TYPE	∅solids mm	DNa DNi	Speed rpm	Power(kW) (IEC)	A	B	C	D	E	F	G	H	I	J	L	Weight kg	Code
RV-65	45	65	1450	0,75 (80)	120	483	215	80	283	100	125	130	10	125	160	23	8RV65B4007S
RV-80	60	80		2,2 (100)	167	632	245	100	369	140	172	163	12	160	196	46	8RV80D4022S
RV-100	75	100		4 (112)	189	671	280	112	406	140	168	186	12	190	220	60	8RV100E4040S

TYPE	∅solids mm	DNa DNi	rpm	kW	A	B	C	D	E	F	G ₁	G ₂	H	I	M ₁	M ₂	N ₁	N ₂	N ₃	N ₄	S ₁	S ₂	Weight kg	Code
RV-150	60	150	1450	15	300	1140	406	280	375	50	414	334	488	90	200	150	490	400	364	414	23	15	300	8RV150A150S



FT.RVS.1.EN-1106

