

Application

The KS pumps are sanitation helical (worm-type) pumps. Because of their design, they are self-suctioning pumps that can suction from a maximum height of 7 meters. This type of pumps can pump materials of both low and high viscosity, as well as materials containing particulates.

Their main uses include pumping of edible oils, wine, concentrates and beverages in general. They can also be used with viscous food products such as jam and marmalade, pasta, pâté, melted cheese, as well as cosmetic products such as soap, gels, toothpaste, and cosmetic creams.

Operating Principle

Friction between the rotor and the stator creates a vacuum in the inlet area, thereby facilitating the entry of the product into the pump.

The turning motion of the rotor makes the cavities between the rotor and the stator move forward and transport the product to the outlet.

Design and characteristics

Bare shaft, hopper and closed coupled versions

Single inside mechanical seal according to DIN 24960 L1K

DIN connections

Ra<0,8 polished surface finished

Open drive (hygienic design)

White painted

Designed according to 3A regulations

Materials

Parts in contact with pumped material:

AISI 316L

Lantern and bearing support:

GG-15

Stator:

Black NBR (FDA)

Gaskets:

NBR (FDA)

Mechanical seal:

Ceramic/Graphite/NBR

Options

Connections DIN, Flanges, SMS, Clamp,

Double pressurized seal

Sealing by packing

SiC/Graf and SiC/SiC seal

Black / white-EPDM (FDA) and white NBR stators

Gaskets in EPDM (FDA)

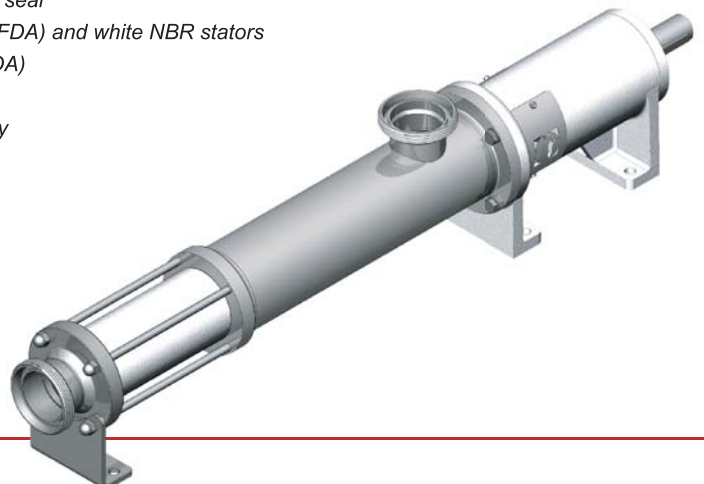
Heavy-duty drive

Iron or stainless trolley

Switchboard

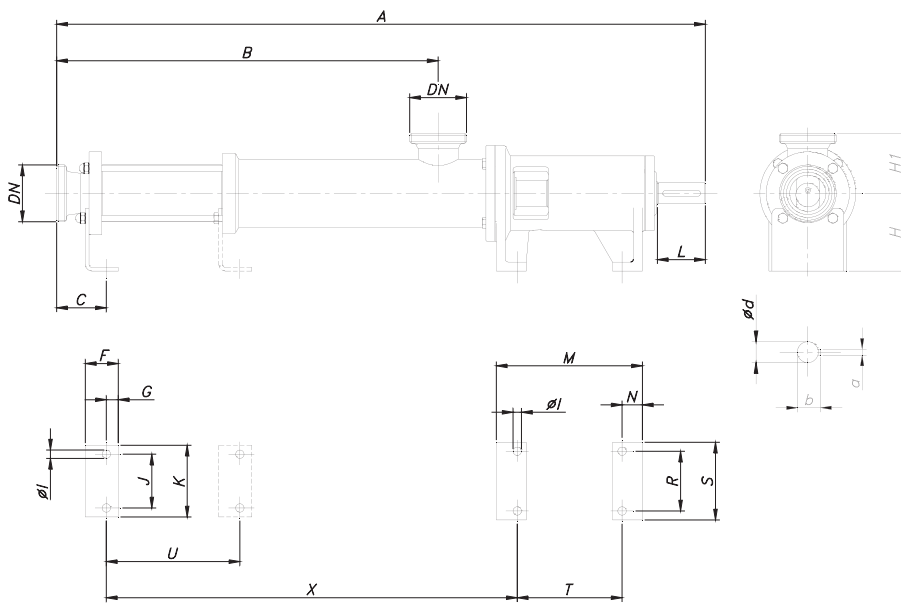
Outside by-pass

Cleaning hole



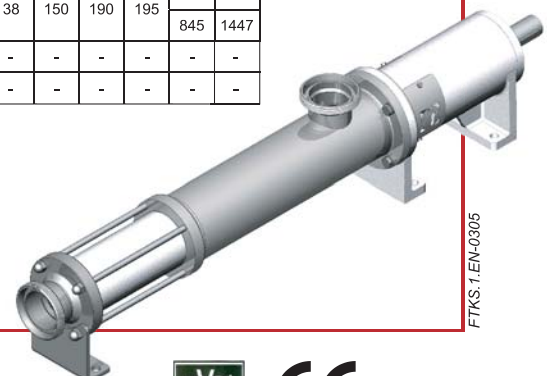
I Technical specifications

Maximum capacity	60 m ³ /h
Maximum differential head	12 bar
Maximum operating temperature	90 °C (according to elastomer quality)
Maximum viscosity	1.000.000 mPa.s



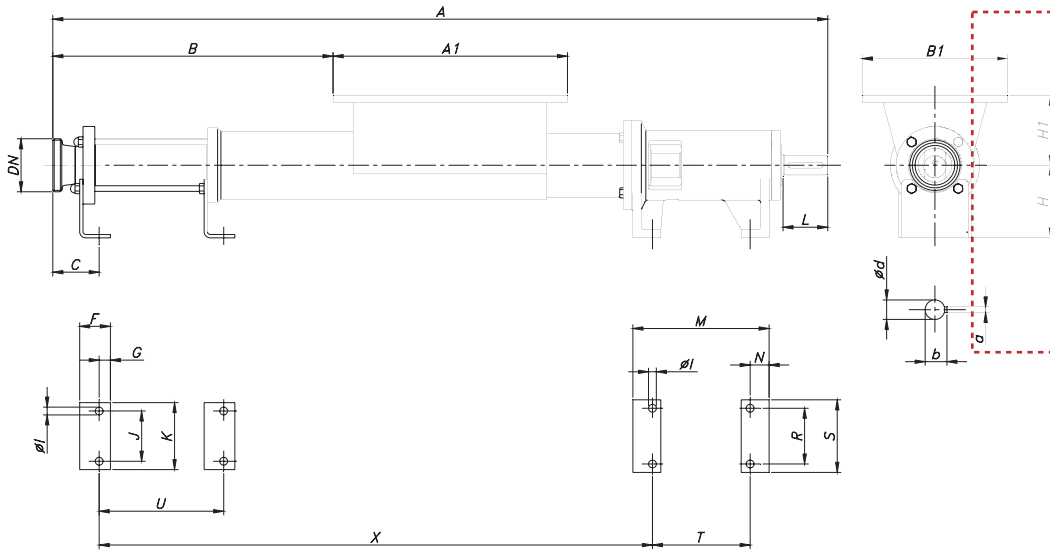
Type	DN	d	L	a	b	A	B	C	F	G	H	H1	I	J	K	M	N	R	S	T	U	X
KS-20	40	20	50	6	22,5	629	319	58	35	12	90	80	11	45	70	179	27	70	100	125	-	339
2KS-20	1½"					729	419														-	439
KS-25	50	25	60	8	27,9	798	441	64	40	15	110	90	11	60	90	204	32	90	120	140	-	481
2KS-25	2"					890	533														-	573
KS-30	50	25	60	8	27,9	796	439	64	40	15	110	90	11	60	90	204	32	90	120	140	-	479
2KS-30	2"					946	589														-	629
KS-40	65	35	80	10	38,3	1083	637	83	55	20	130	100	14	90	120	244	46	100	130	175	-	686
2KS-40	2½"					1273	827														413	876
KS-50	80	35	80	10	38,3	1145	699	88	55	20	130	100	14	90	120	244	46	100	130	175	-	743
2KS-50	3"					1399	953														530	997
KS-60	100	48	110	14	51,5	1407	864	99	60	20	160	135	18	130	170	271	38	150	190	195	-	937
2KS-60	4"					1707	1164														635	1237
KS-80	100	48	110	14	51,5	1527	984	109	60	20	160	135	18	150	190	271	38	150	190	195	-	1047
2KS-80	4"					1927	1384														845	1447
KS-100 *	-	-	-	-	-	-	-	-	-	-	-	-	-	-	-	-	-	-	-	-	-	-
KS-120 *	-	-	-	-	-	-	-	-	-	-	-	-	-	-	-	-	-	-	-	-	-	-

* At present not available

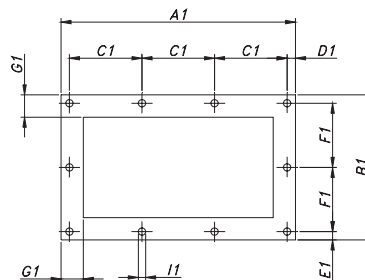


FTKS.1.EN-0305



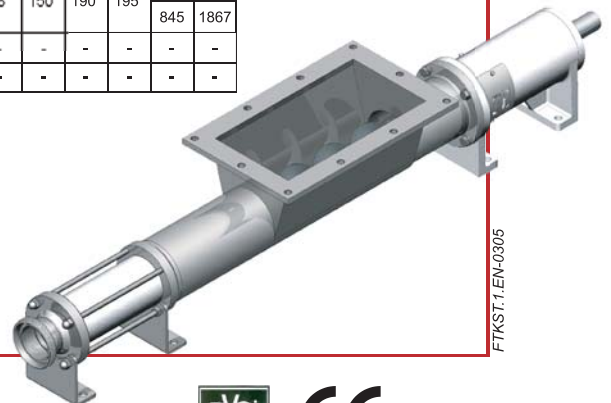


Type	Hoppe dimensions							
	A1	B1	C1	D1	E1	F1	G1	I1
KST-20	300	210	70	10	10,5	63	25	10
KST-25	365	250	69	10	10	57,5	30	12
KST-30	420	260	130	15	15	115	40	14
KST-40	585	340	110	17,5	15,5	103	40	14
KST-50	-	-	-	-	-	-	-	-
KST-60	-	-	-	-	-	-	-	-
KST-80	-	-	-	-	-	-	-	-
KST-100 *	-	-	-	-	-	-	-	-
KST-120 *	-	-	-	-	-	-	-	-



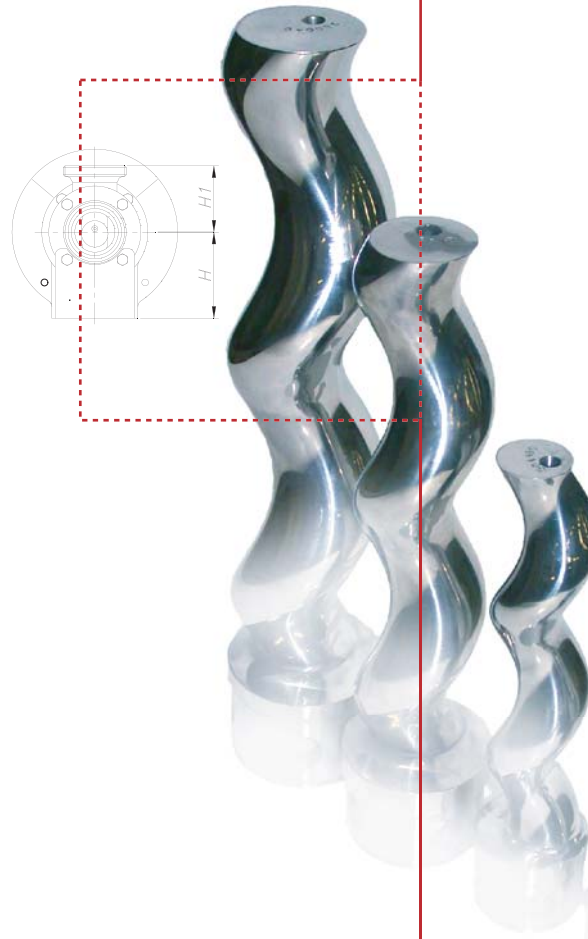
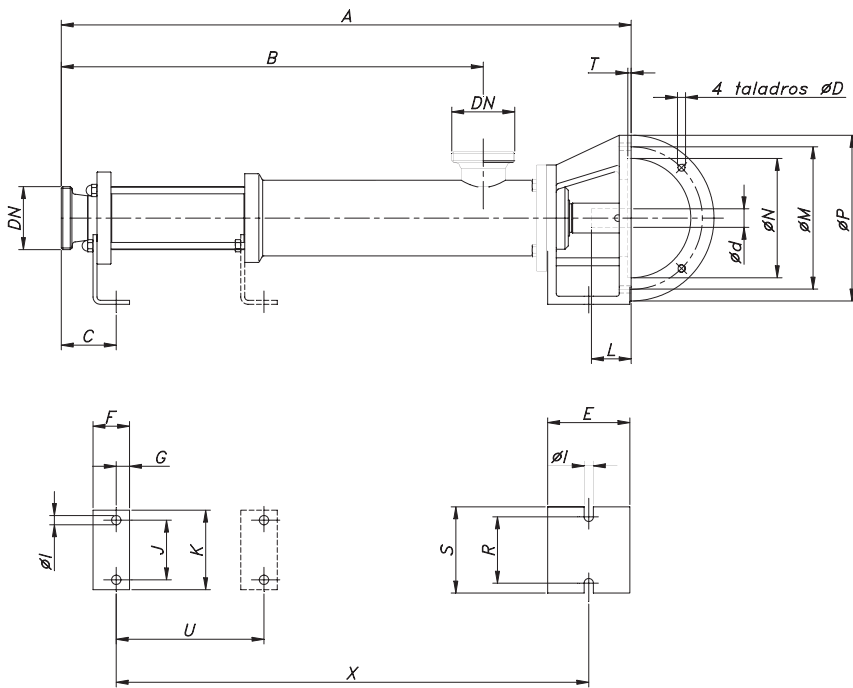
Type	DN	d	L	a	b	A	B	C	F	G	H	H1	I	J	K	M	N	R	S	T	U	X
KST-20	40	20	50	6	22,5	885	270	58	35	12	90	85	11	45	70	179	27	70	100	125	105	606
2KST-20	1 1/2"	20	50	6	22,5	985	370	58	35	12	90	85	11	45	70	179	27	70	100	125	205	706
KST-25	50	25	60	8	27,9	1108	381	64	40	15	110	125	11	60	90	204	32	90	120	140	166	791
2KST-25	2"	25	60	8	27,9	1200	473	64	40	15	110	125	11	60	90	204	32	90	120	140	258	883
KST-30	50	25	60	8	27,9	1106	379	64	40	15	110	125	11	60	90	204	32	90	120	140	164	789
2KST-30	2"	25	60	8	27,9	1256	529	64	40	15	110	125	11	60	90	204	32	90	120	140	314	939
KST-40	65	35	80	10	38,3	1388	502	83	55	20	130	125	14	90	120	244	46	100	130	175	223	991
2KST-40	2 1/2"	35	80	10	38,3	1578	692	83	55	20	130	125	14	90	120	244	46	100	130	175	413	1181
KST-50	80	35	80	10	38,3	1450	564	88	55	20	130	125	14	90	120	244	46	100	130	175	280	1048
2KST-50	3"	35	80	10	38,3	1704	818	88	55	20	130	125	14	90	120	244	46	100	130	175	534	1302
KST-60	100	48	110	14	51,5	1827	704	99	60	20	160	160	18	130	170	271	38	150	190	195	335	1357
2KST-60	4"	48	110	14	51,5	2127	1004	99	60	20	160	160	18	130	170	271	38	150	190	195	635	1657
KST-80	100	48	110	14	51,5	1947	824	109	60	20	160	160	18	150	190	271	38	150	190	195	445	1467
2KST-80	4"	48	110	14	51,5	2347	1224	109	60	20	160	160	18	150	190	271	38	150	190	195	845	1867
KST-100 *	-	-	-	-	-	-	-	-	-	-	-	-	-	-	-	-	-	-	-	-	-	-
KST-120 *	-	-	-	-	-	-	-	-	-	-	-	-	-	-	-	-	-	-	-	-	-	-

* At present not available



FTKST.1.EN-0305





Type	Dimensions coupling operation								
	d		L		D	M	N	P	T
	Min	Max	Min	Max					
KSF-20	19	24	42	52	M8	130	110	160	5
KSF-25	24	28	52	62	M10	165	130	200	5
KSF-30	24	28	52	62	M12	165	130	200	5
KSF-40	24	35	52	72	M12	215	180	250	5
KSF-50	24	35	52	72	M12	215	180	250	5
KSF-60	35	42	72	112	M12	265	230	300	5
KSF-80	35	42	72	112	M12	265	230	300	5

Type	DN	A	B	C	E	F	G	H	H1	I	J	K	R	S	U	X
KSF-20	40	484	319	58	101	35	12	90	80	11	45	70	70	100	-	379
2KSF-20	1½"	584	419												-	479
KSF-25	50	625	441	64	110	40	15	110	90	11	60	90	90	120	-	504
2KSF-25		2"	717												533	-
KSF-30	50	623	439	64	110	40	15	110	90	11	60	90	90	120	-	502
2KSF-30		2"	773												589	-
KSF-40	65	860	637	83	124	55	20	130	100	14	90	120	100	130	-	713
2KSF-40		2½"	1050												827	413
KSF-50	80	922	699	88	124	55	20	130	100	14	90	120	100	130	-	770
2KSF-50		3"	1176												953	530
KSF-60	100	1119	864	99	121	60	20	160	135	18	130	170	150	190	-	958
KSF-80	100	1239	984	109	121	60	20	160	135	18	150	190	150	190	-	1068



The information contained in this brochure is for guidance only. We reserve the right to modify any material or feature without notice in advanced. For further information please consult our web site. www.inoxpa.com



FTKSF.1.EN-0305