

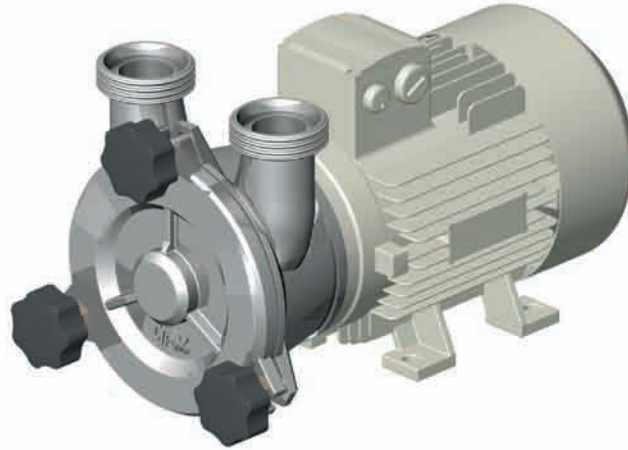
# SELF-PRIMING PUMPS SERIES A



## A 20 - 30

Close-coupled pump with impeller directly supported by the electric motor shaft. Easy-opening front cover, for quick inspection, without disassembling the inlet and outlet pipes.

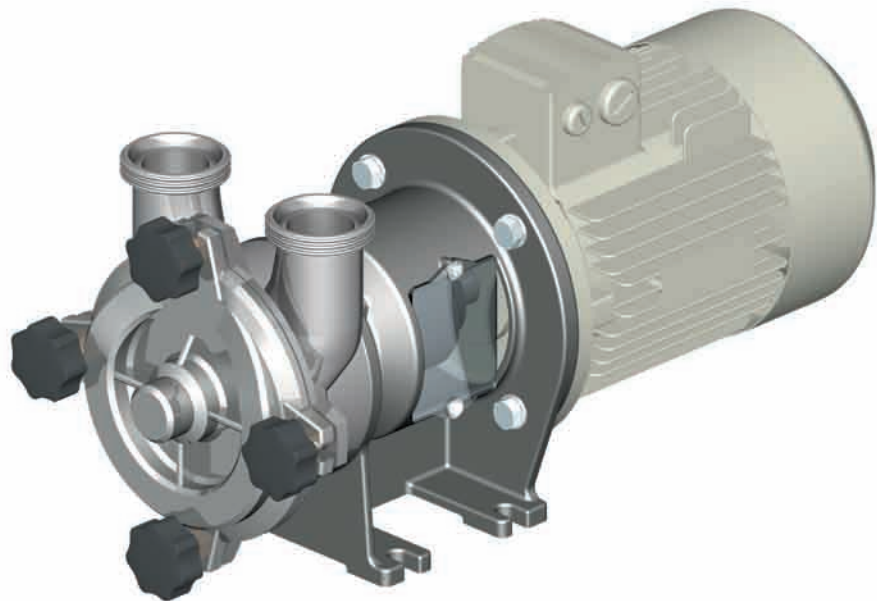
SURFACE FINISHING:  
CHEMICAL POLISHING



## A 40 - 50 - 65 - 80

Pumps in close-coupled version with separate motor and flexible coupling joint. Easy-opening front cover, for quick inspection without disassembling the inlet and outlet pipes.

SURFACE FINISHING:  
CHEMICAL POLISHING



## DUTIES AND TECHNICAL FEATURES

### DUTIES

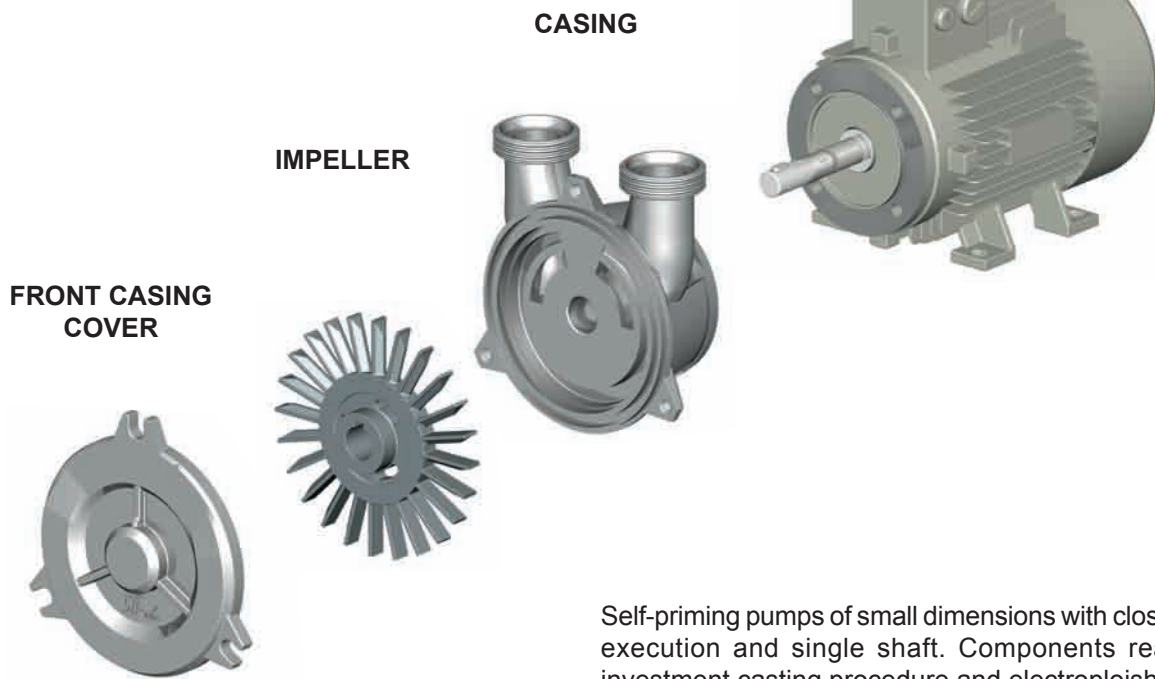
Pumps suitable to handle a wide range of clear liquids (fruit juice, milk, whey, syrup, edible oil, wine, spirits, chemical and pharmaceutical product), liquids containing air bubbles or foam. This particular kind of pump can operate also with a partially filled suction pipe as can purge pipes and will not air-lock. The construction materials and the quick-disassembly design make this pump ideally suited to the Food, Dairy and Beverage industries.

### TECHNICAL FEATURES

Side-channel, centrifugal, self-priming pumps. These must be filled with the handled liquid only when starting-up for the first time, afterwards they are capable of self-priming even if the suction pipe is empty. All wetted parts are manufactured in AISI 316L, stainless steel.

# SERIES A 20 - 30

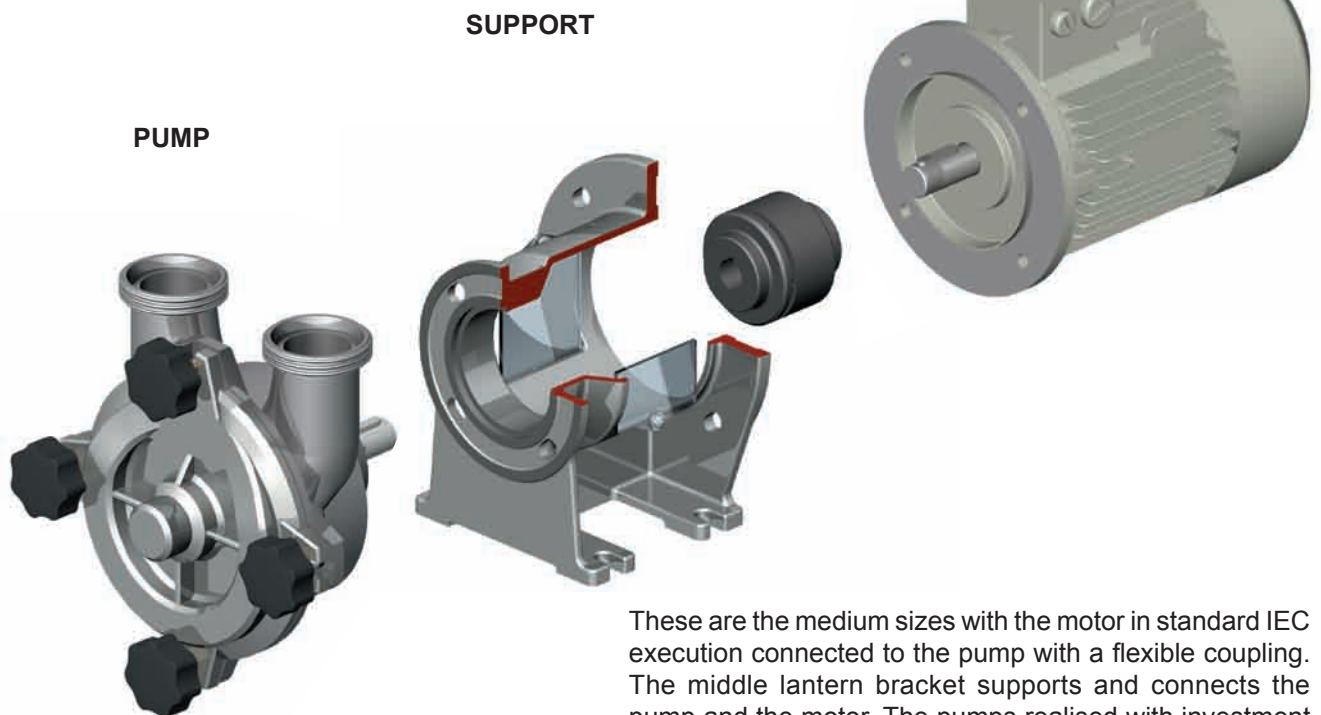
MOTOR



Self-priming pumps of small dimensions with closed-coupled execution and single shaft. Components realised with investment casting procedure and electropolished.

# SERIES A 40 - 50

MOTOR

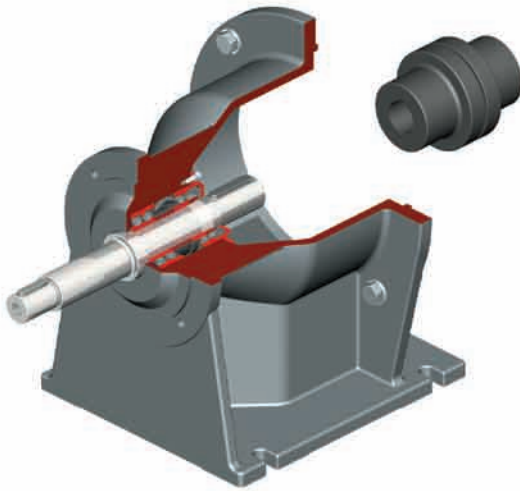


These are the medium sizes with the motor in standard IEC execution connected to the pump with a flexible coupling. The middle lantern bracket supports and connects the pump and the motor. The pumps realised with investment casting procedure and electropolished form an independent block.



## INDEPENDENT SUPPORT

Standard IEC motors and flexible coupling joint allow choices and arrangements for any requirement.



## CASING

Compact and sturdy side duct. investment casting and electrochemical polishing treatment ensure excellent surface finishing levels.



## IMPELLER

As a result of their perfect shapes, thickness and materials, they are already balanced by the investment casting procedure. This allows a perfect working and performance reliability.



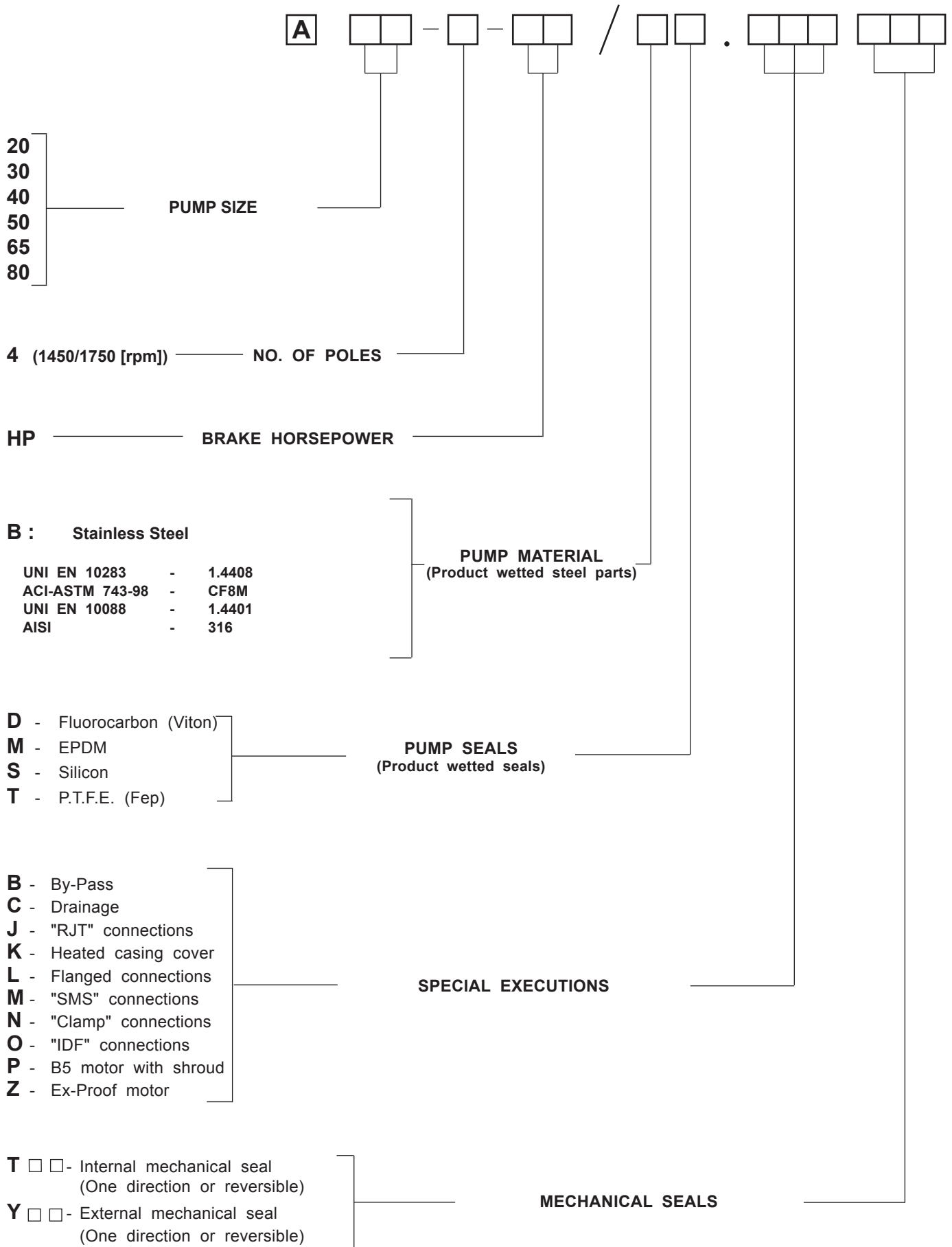
## FRONT CASING COVER

The front casing cover with vertical connections facilitates the liquid maintenance ensuring a perfect priming.



# PUMP CODES GUIDE

**A**

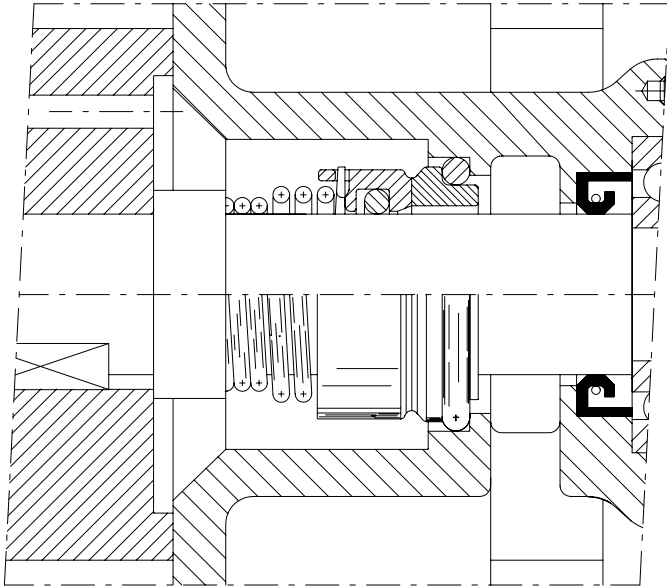


Example: **A 50-4-3 / B.MT31**

# MECHANICAL SEAL



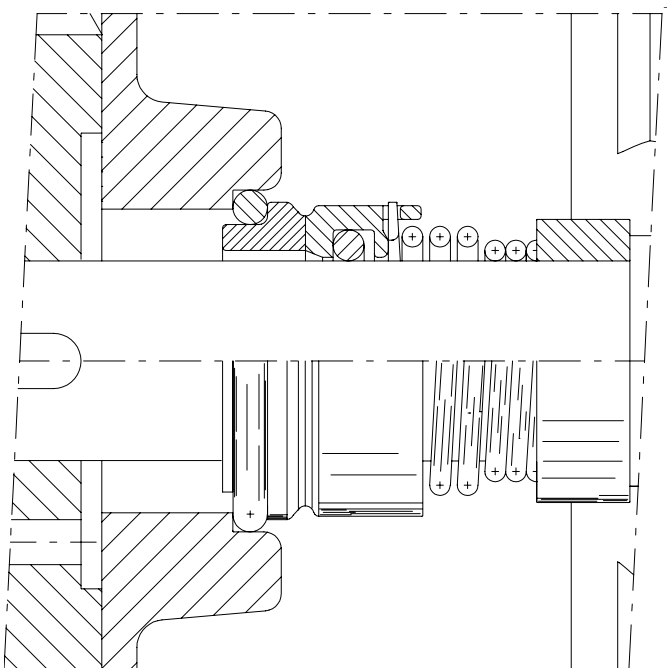
A pumps are fitted with mechanical seal. The seal components are available in a wide range of materials, to be selected according to the handled product features and the operating conditions.



## EXECUTION T

### MECHANICAL SEAL ASSEMBLY "T"

Internal assembly seal, standard version on A 40 - A 50 - A 65 - A 80 pump sizes, running into the handled product and placed immediately behind the impeller in a suitable seal chamber to ensure the correct re-circulation around the seal faces.



## EXECUTION Y

### MECHANICAL SEAL ASSEMBLY "Y"

External assembly seal, standard version on A 20-30 pump sizes. Suitable for these low-pressure sizes, the seal components are not directly touched by the handled product, avoiding corrosion problems and seal-working conditioning.

ONE DIRECTION

REVERSIBLE



# MECHANICAL SEAL



## MATERIAL CODES

### METALS

- H** - Nickel-plated stainless steel AISI 304
- X** - Molybdenum nickel-plated stainless steel AISI 316
- J** - Stellite coating on stainless steel
- L** - Hastelloy Union Carbide

### CARBONS

- V** - normal carbon
- Z** - special carbon

### RESINS

- 5** - normal PTFE
- 4** - loaded PTFE
- F** - O-Ring FEP

### METAL CARBONS

- 3** - Hard metal welded on stainless steel (TUC)
- R** - Integral anti-corrosion hard metal (TUC)
- K** - Integral silicate carbon SIC

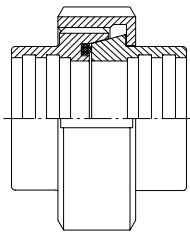
### METAL OXIDES

- 2** - Alumina ceramic

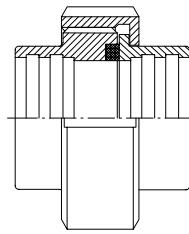
### ELASTOMERS

- 6** - Nitrile
- 7** - Ethylene propylene
- Y** - Fluorocarbon (Viton)
- B** - Silicone
- U** - Kalrez

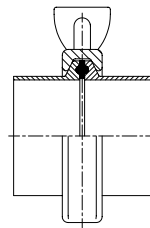
# CONNECTIONS



DIN



SMS



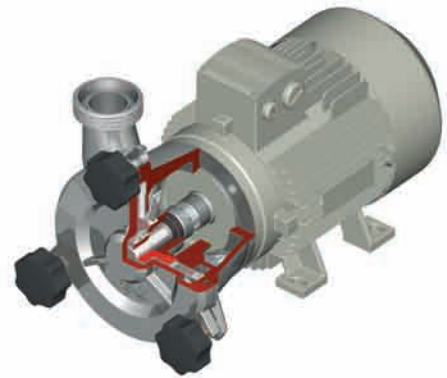
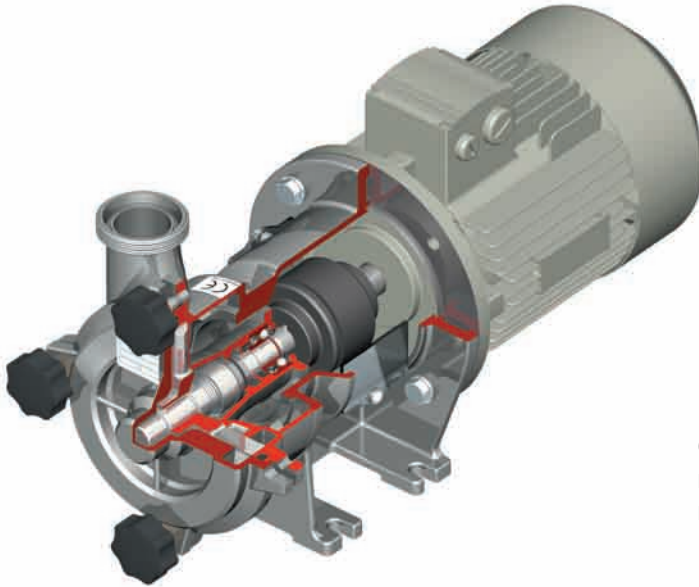
CLAMP

Connections available according to DIN 11851, SMS, CLAMP, IDF, RJT standards.



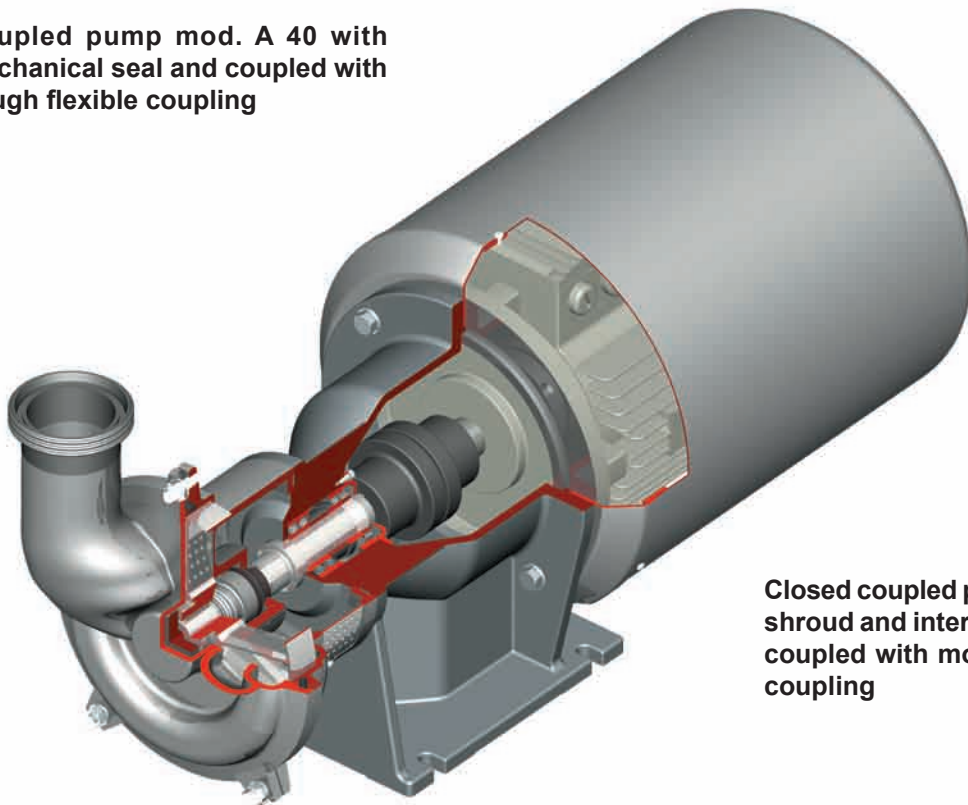
On mobile trolley for different uses. The mobility of the pump allows to use it by interchanging workstations and products.

# VARIOUS EXECUTIONS



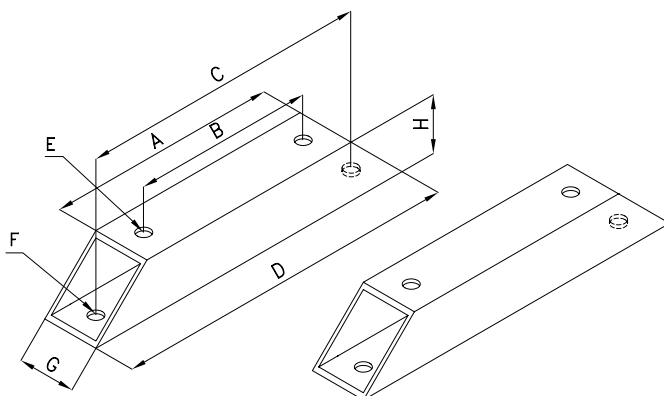
Closed coupled pump mod. A 30 with external mechanical seal and overhang impeller on extended motor shaft

Closed coupled pump mod. A 40 with internal mechanical seal and coupled with motor through flexible coupling



Closed coupled pump mod. A 80, with shroud and internal mechanical seal, coupled with motor through flexible coupling

## MOTOR SHIMS AND SUPPORTS



Frame (IEC - DIN)	A	B	C	D	E	F	G	H
71	110	90	130	190	10	10	40	40
80	130	100	170	210	10	10	40	40
90 S	140	100	200	240	10	10	40	40
90 L	160	125	200	240	10	10	40	40
100 L	180	140	230	280	12	12	50	50
112 M	180	140	230	280	12	12	50	50
132 M	226	140	266	346	12	12	60	60
132 L	226	178	266	346	12	12	60	60